

New Carlisle Station Feasibility Study Update: Community Meeting

JANUARY 29, 2025



Agenda

- Introductions
- Project Background
- Station Benefits
- Station Location Alternatives
- Discussion



Source: NICTD

Objectives

- Discuss benefits of New Carlisle Station
- Present station options and layouts
- Gather community feedback on potential station locations



Source: Town of New Carlisle

South Shore System





Introductions

Project Team



Bill Schalliol, Esq.
Director of Economic Development

Terry O'Brien
Economic Development Planner



Eric Neagu, P.E., LEED AP, AICP
Principal

Molly Delaney
Planner

Mariana Madison, P.E.
Senior Project Engineer



Michael Noland
President, South Shore Line / NICTD

Nicole Barker
Director of Capital Investment and Implementation
Double Track NWI Project Manager



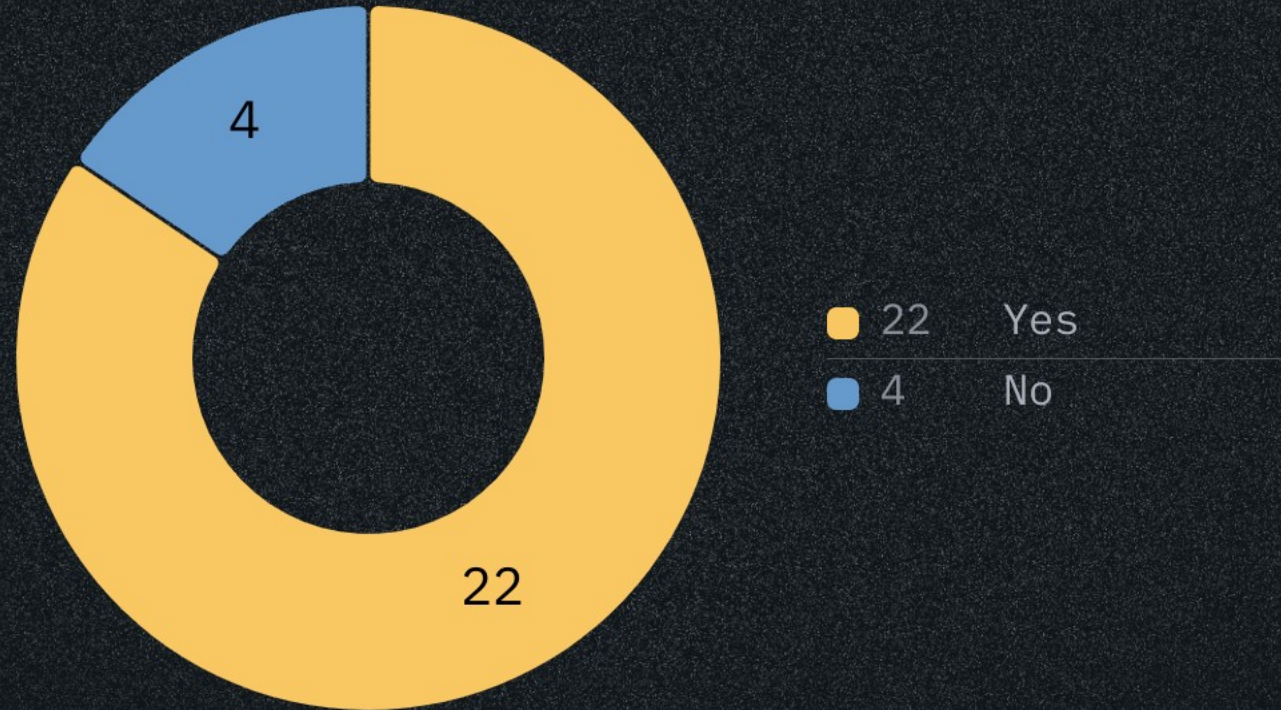
Timothy Whalen, P.E.
Vice President, US West Transportation

Gary Foyle
Project Manager, Transportation Planning

Brian Czosnyka, P.E.
Project Manager, US West Transportation

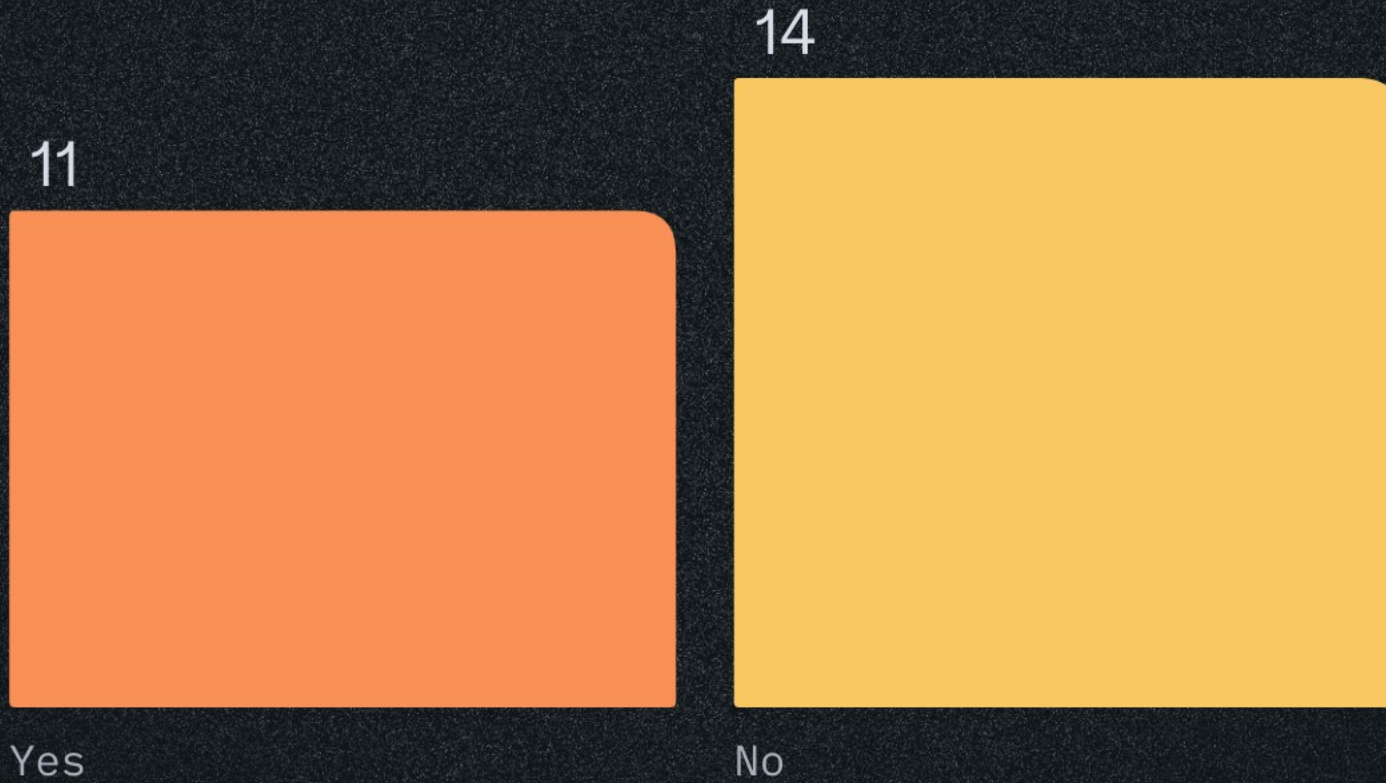
Do you live in New Carlisle?

Note: These results are from Mentimeter only.
Paper submissions are not included in these numbers.



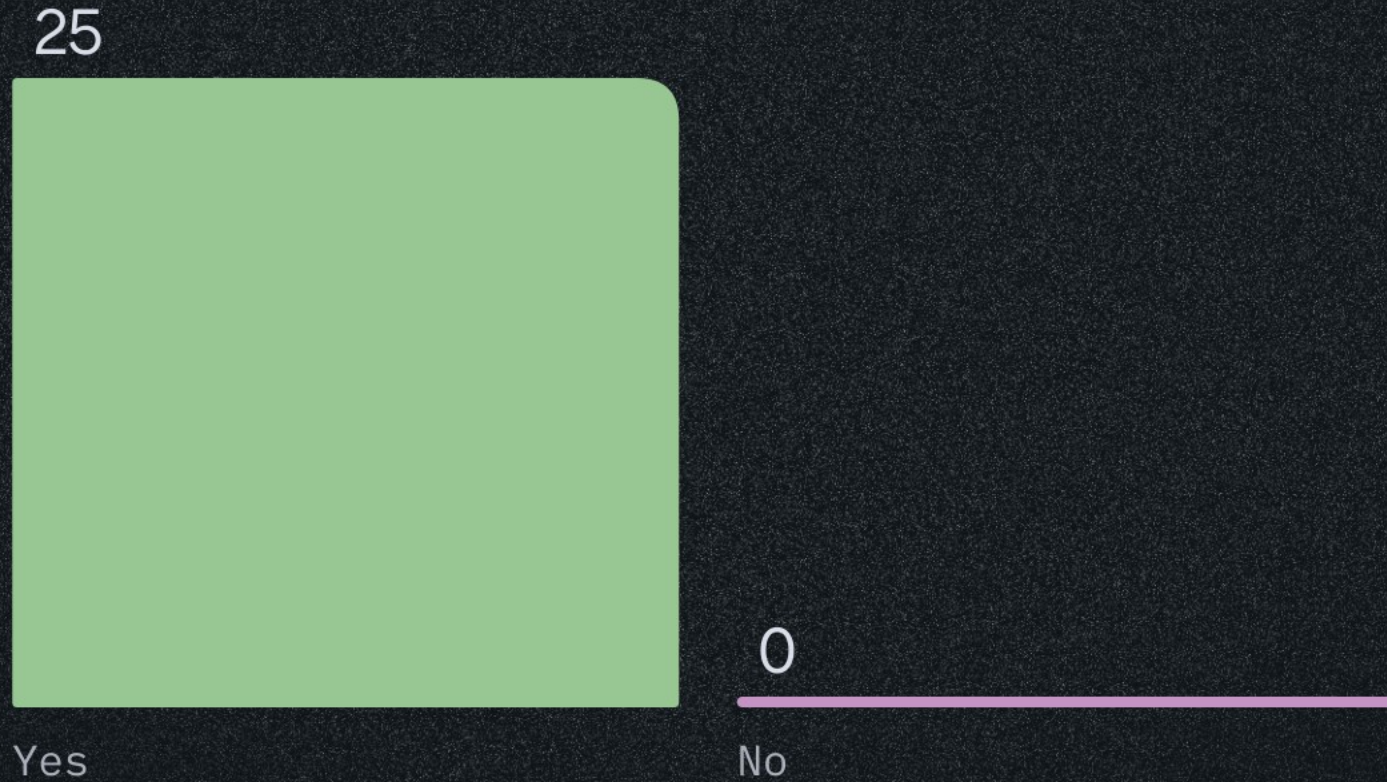
Do you work in New Carlisle?

Note: These results are from Mentimeter only.
Paper submissions are not included in these numbers.



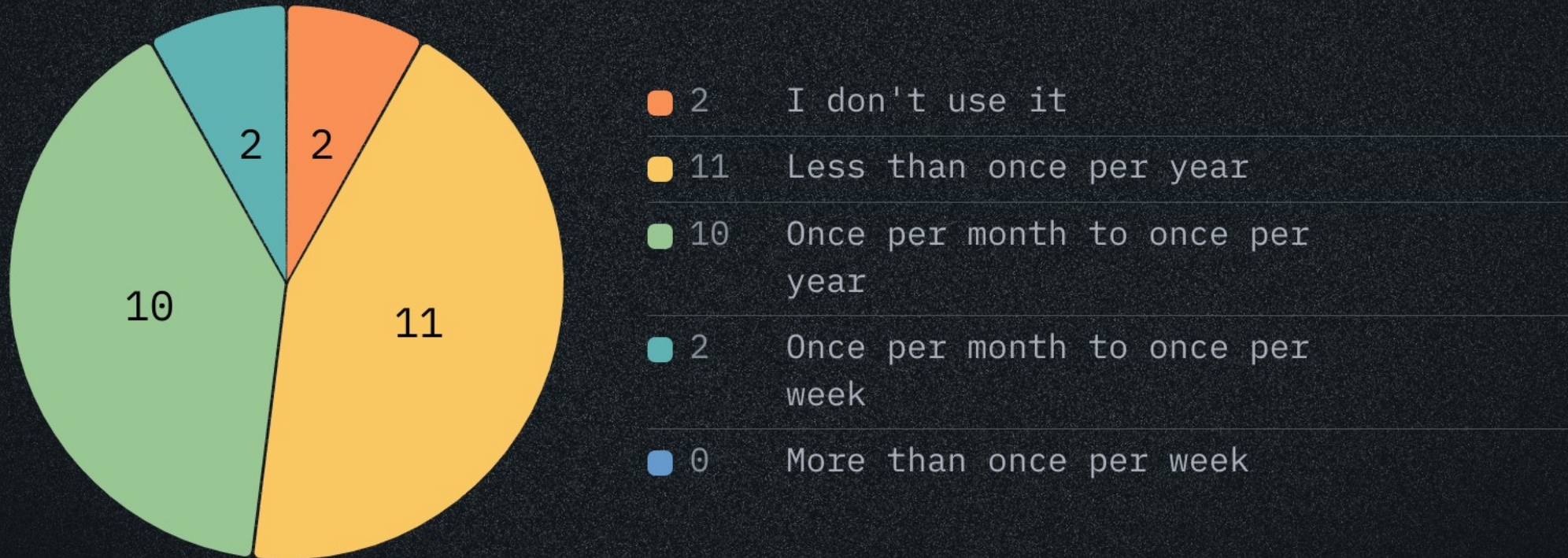
Have you ever taken the South Shore Line?

Note: These results are from Mentimeter only.
Paper submissions are not included in these numbers.



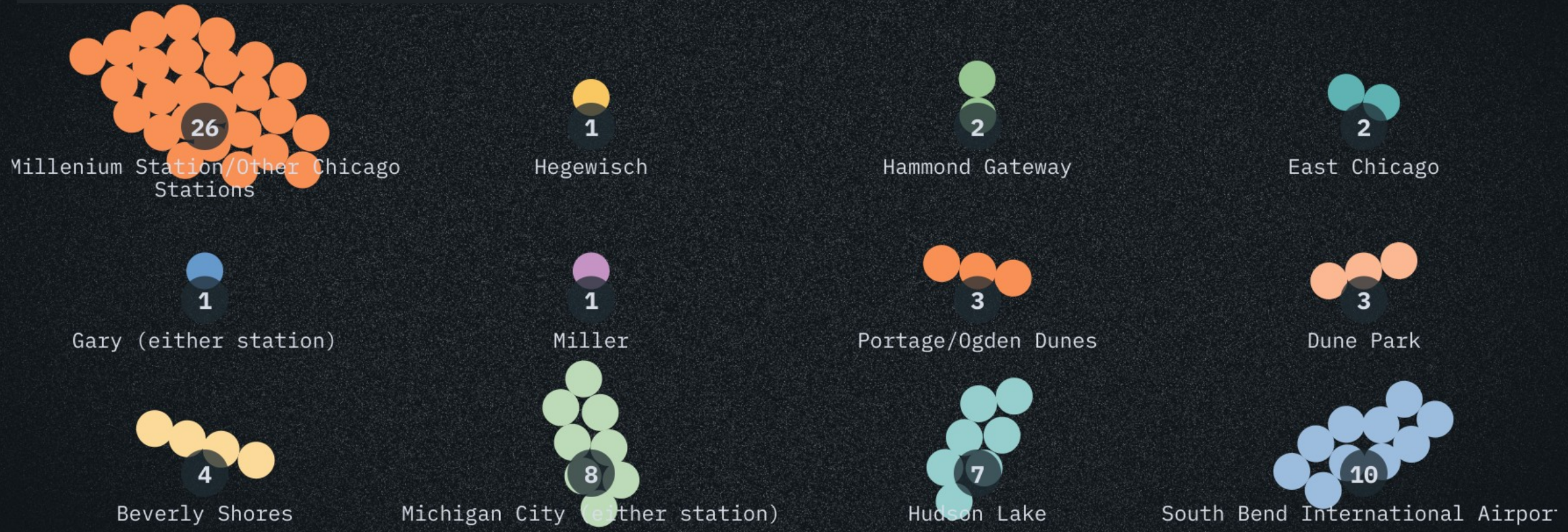
How frequently do you use the South Shore Line?

Note: These results are from Mentimeter only.
Paper submissions are not included in these numbers.



When you use the South Shore Line, which station(s) do you visit?

Note: These results are from Mentimeter only.
Paper submissions are not included in these numbers.





Project Background

South Bend Tribune

Why New Carlisle?



Source: Discover New Carlisle

SHIPPING FACILITIES and transportation is one of the greatest assets a town can have, and New Carlisle is exceptionally fortunate in this respect, being situated on the Lincoln Highway giving access to LaPorte, Chicago, South Bend and other near by cities by the best of cement and brick roads. It is on the main line of the New York Central, on the South Shore lines, and the Northern Indiana railway. These three railroads give to the merchants, factories and farmers the very best of railroad facilities from the far east and west, express service at freight rates in overnight from Chicago in direct connection



ELECTRIC SERVICE
SOUTH SHORE

touching all the Mississippi gateways. The passenger service is of the highest standard, there being 50 trains in and out of New Carlisle every day with very good connections in every direction.



NEW YORK CENTRAL



NORTHERN INDIANA

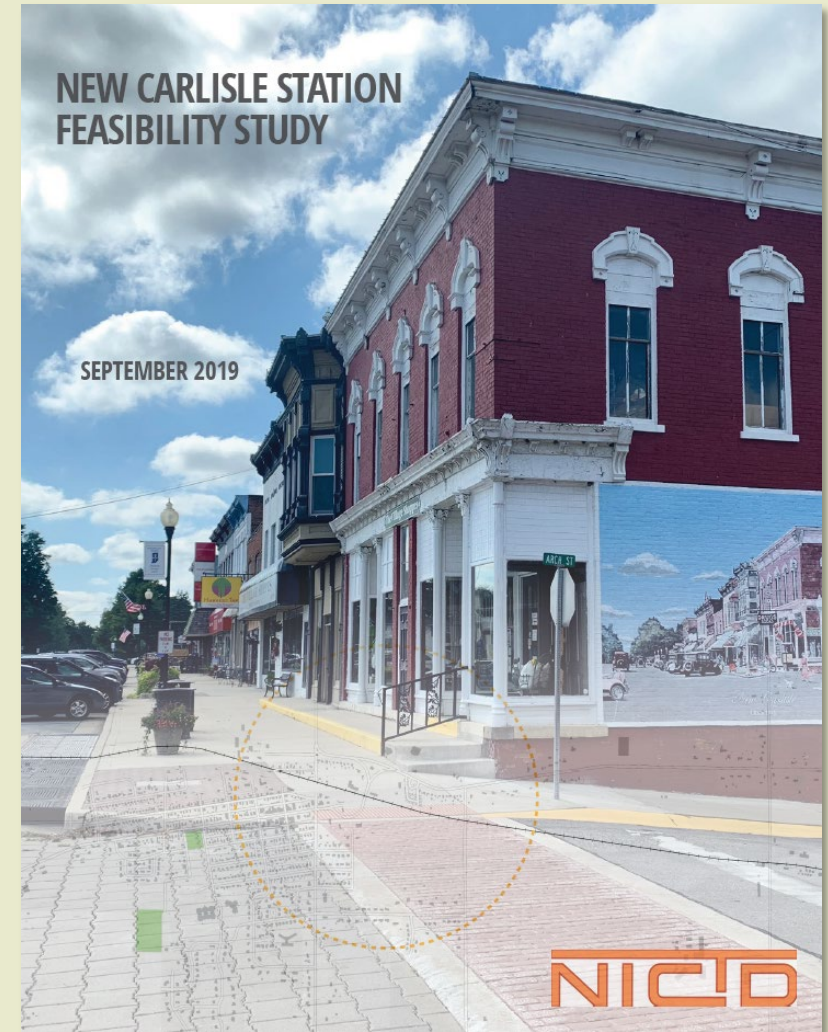
There are a hundred faults in this thing, and a hundred things might be said to prove them beautiful. But it is needless. A booklet may be amusing with numerous errors, or it may be dull without a single absurdity. With the words of Goldsmith running through our minds, we send forth into the commercial world this booklet, the child of our fancy. We recognize its weakness and glory in its success. We have put forth a mighty effort to make it full and complete and beautiful.

Resting now from our labors, we entrust it to you, Mr. Manufacturer, Mr. Business Man, and to those who are interested in opportunities and the standards of progress and development.

- Historical presence
- Halfway point between Michigan City and South Bend Airport
- Populous area
- Potential to generate economic activity

2019 New Carlisle Station Feasibility Study

- Initial study launched to explore feasibility of a New Carlisle station.
- Study concluded that a station in New Carlisle was feasible and would generate sufficient ridership.



Regional Changes

- Indiana Enterprise Center
- Double-track completion
- Ridership changes after the COVID-19 pandemic
- South Bend Airport station relocation
- Hudson Lake challenges



New Carlisle Station Feasibility Study Update

- Evaluate previous site recommendation as well as new alternatives
- Consider impact of new economic development in the region
- Explore last-mile connections
- Support and partnerships with the community



Station Benefits



merica"
E LINE

CENTRAL RAILROAD
STATIONS & KENSINGTON

AUTUMN IN THE
SOUTH SHORE

FAST LIMITED
LEAVING ILLINOIS CENTRAL
AT VAN BUREN, ROOSEVELT ROAD, ST.



STRENGTH AND BEAUTY
SOUTH SHORE LINE

OSIE
NATIONAL

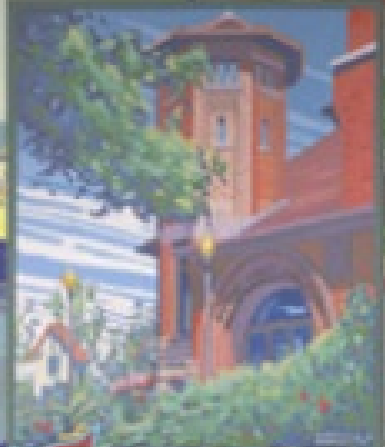
Reserve is local
has 275 acres of well
situated in North

OUTH S

The DUNES BEACHES

By the
SOUTH SHORE L

Trains from Chicago operated over Illinois
from Randolph, Van Buren, 12th, 43rd, 53rd & 63rd St.



WHITING.
South Shore Line

TY SE
THE
IE

Benefits of a New Station

- Economic
- Traffic
- Workforce Recruitment
- Quality of Life



Economic

- Attract visitors to downtown New Carlisle
- Increase property value
- Support local economy
- Development opportunities
- Return on investment



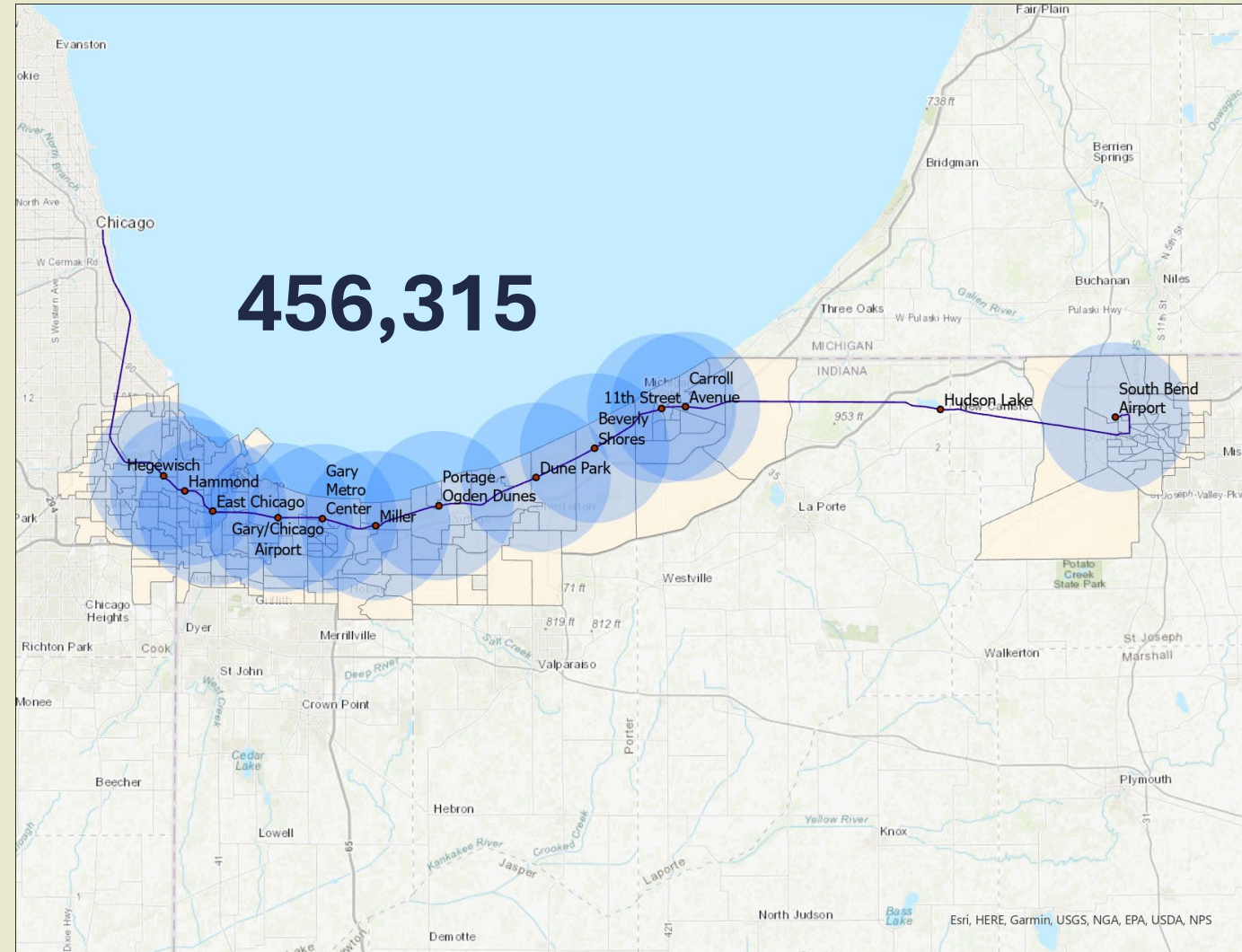
Traffic

- Reduce roadway congestion
- Shorter commute times
- Reduction in single-occupancy vehicle use
- Potential safety improvements



Workforce Recruitment

- Anticipated jobs at IEC:
 - GM: 1,600 (+2,000 for construction)
 - Amazon: 1,000
- Access to greater workforce potential
- Over 400,000 people ages 18-65 within 5 miles of a South Shore station
- Last-mile connections from train station



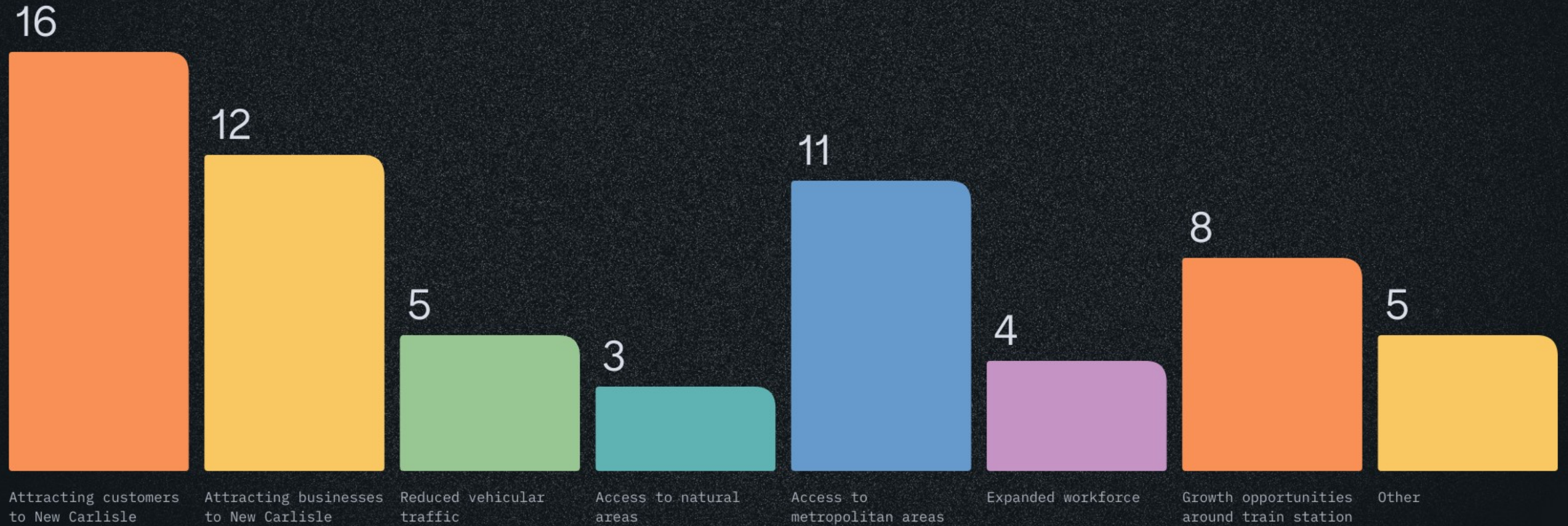
Quality of Life

- Easier access to the South Shore Line
- Proximity to Chicago and South Bend Airport
- Opportunity for a “Gateway” into the Town
- Potential pedestrian tunnel connection to downtown
- Reduced vehicle emissions and improved air quality



What do you think are the top three benefits of a new train station in New Carlisle?

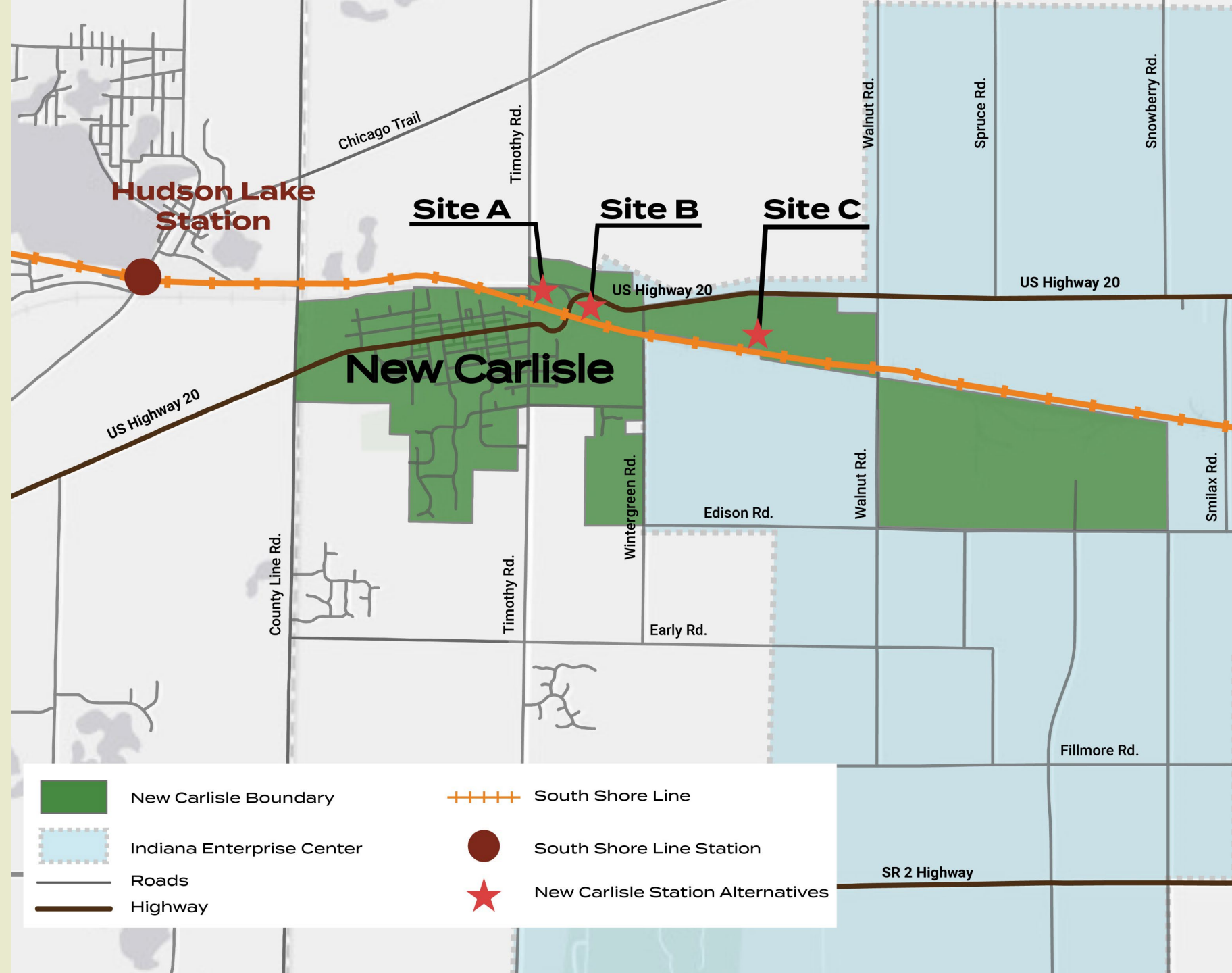
Note: These results are from Mentimeter only.
Paper submissions are not included in these numbers.



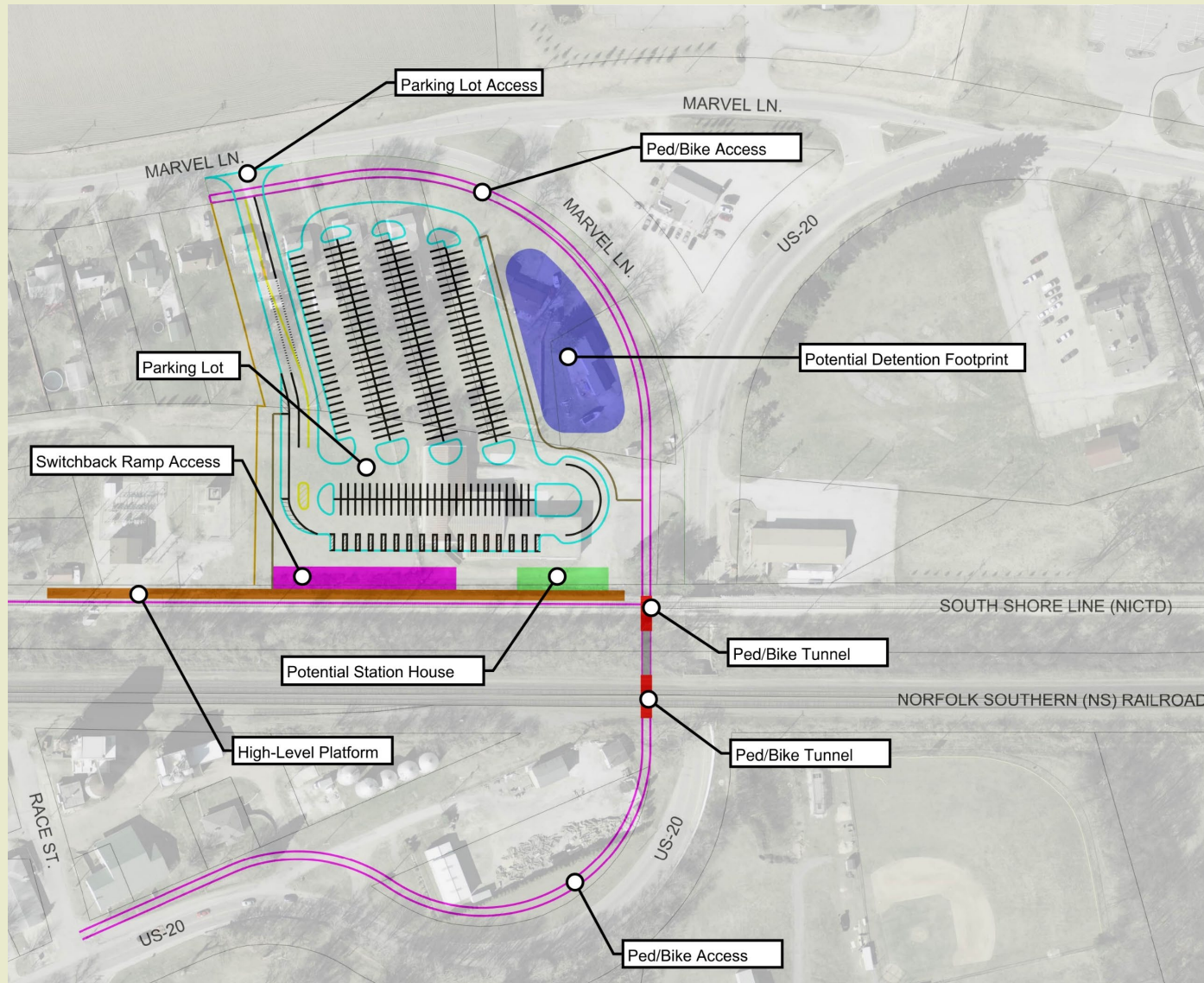


Station Alternatives

Station Alternatives

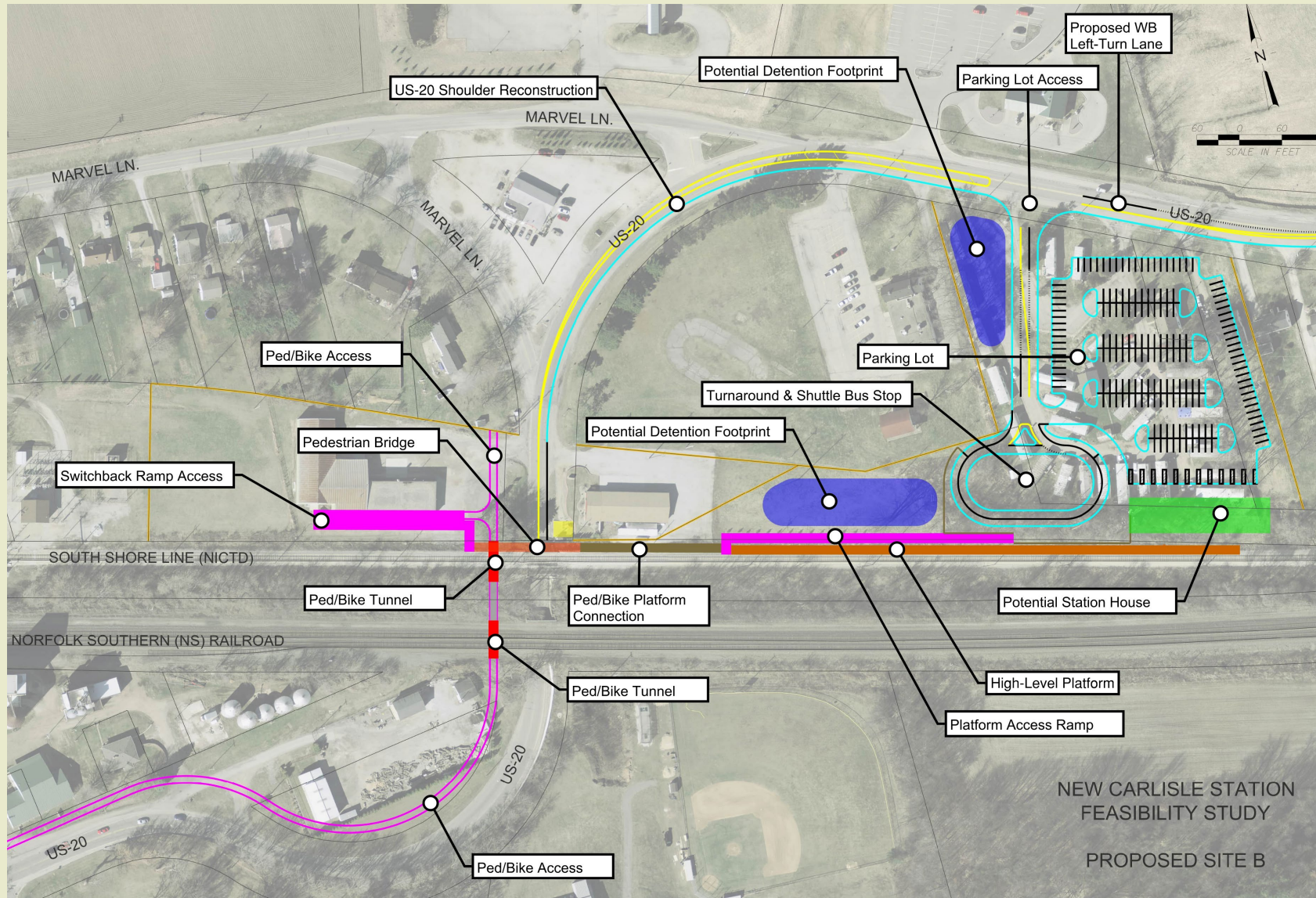


Site A



- Accessible from Route 20
- Assessed in 2019 study, but not selected
- Identified as potential site in 2023 New Carlisle Comprehensive Plan
- Approx 1/3 mile from Town Hall
- Potential for pedestrian tunnel

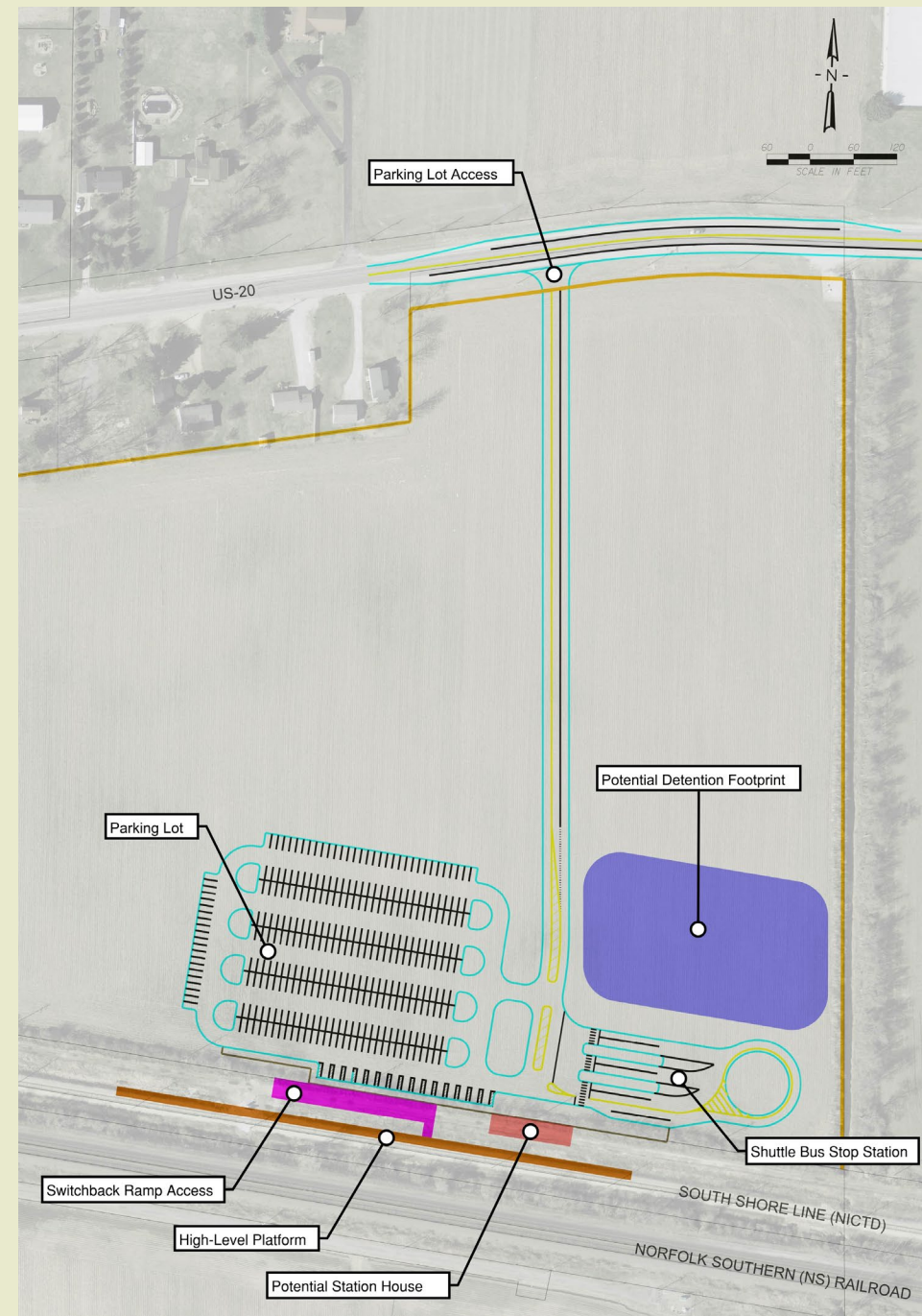
Site B



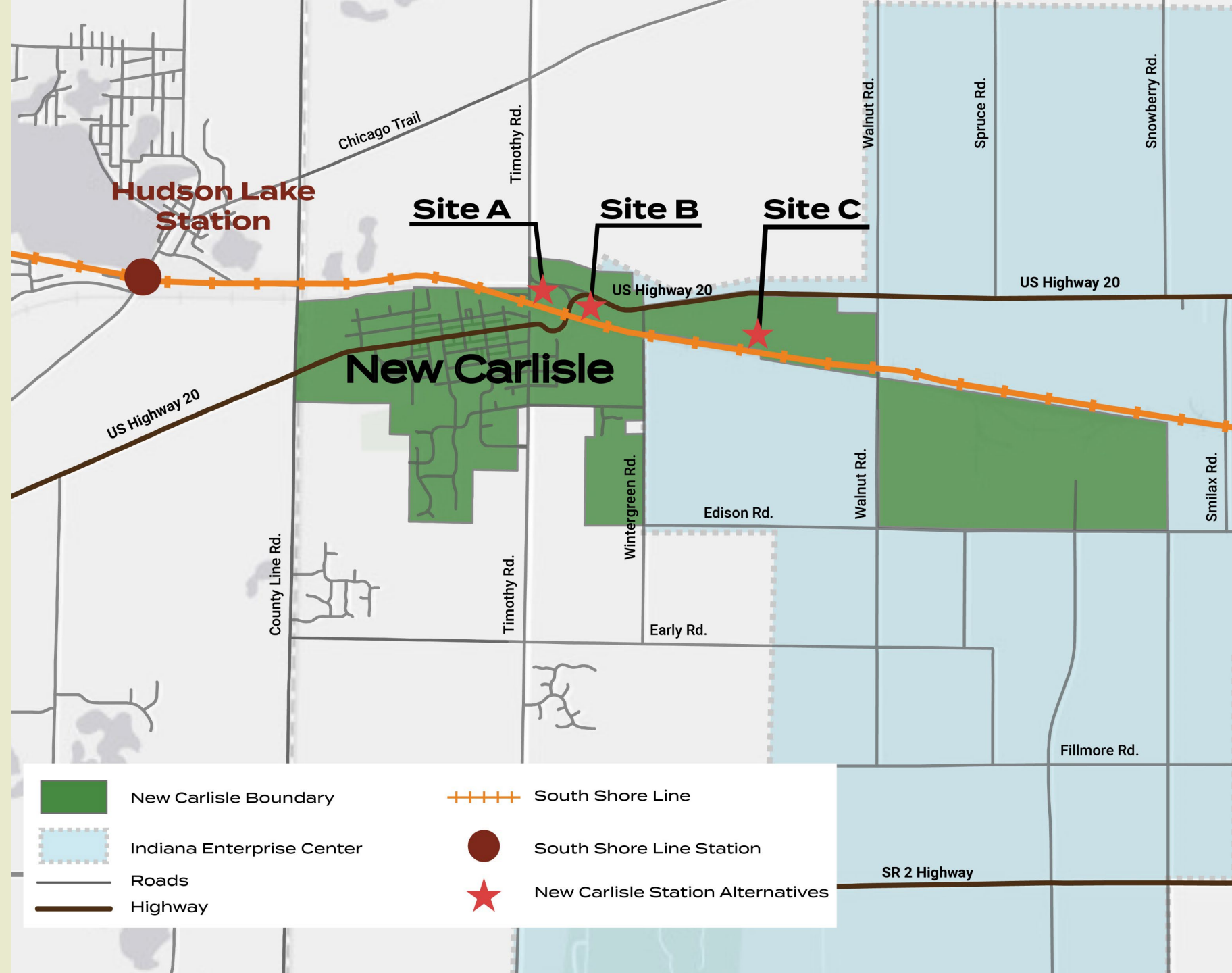
- Accessible from Route 20
- Identified as the most feasible site in 2019 New Carlisle Feasibility Study
- Approx 1/3 mile from Town Hall
- Potential for pedestrian tunnel

Site C

- Site closer to IEC
- Accessible from Route 20
- Approx 1 mile from Town Hall
- Infrastructure costs would be higher



Station Alternatives



What are the three most important considerations in a new train station?

Note: These results are from Mentimeter only.
Paper submissions are not included in these numbers.



Discussion



HOMeward BOUND *by* SOUTH SHORE LINE

TRAINS FROM CHICAGO OPERATED OVER THE ILLINOIS CENTRAL RAILROAD
from RANDOLPH, VAN BUREN, 12TH, 43RD, 53RD, AND 63RD STREET STATIONS AND KENSINGTON



Terry O'Brien

Director of Economic Development

Department of Infrastructure, Planning & Growth

tobrien@sjcindiana.gov



Eric Neagu, P.E. LEED AP, AICP

Principal

eneagu@anterogroup.com