



Monthly Ridership and Performance Report

August 2024



Northern Indiana Commuter Transportation District

August 2024 Monthly Performance Report

Ridership

Overall - Ridership for the month was up 18.1% when compared to 2023. Passenger trips for the month were 177,065 in 2024 and 149,901 in 2023. Cumulative year to date ridership was up 12.9% over 2023.

Weekday Travel – Average weekday peak travel was down 3.7% when compared to 2023 while average off peak travel was up 45.3% over 2023 ridership. The combined weekday average in 2024 was 6,163 rides compared to 5,399 in 2023. That is a 14.1% increase for 2024 compared to 2023. Cumulative year to date weekday ridership is up 10.1% over 2023.

Weekend Travel – Weekend ridership was up 40.0% when compared to 2023. The daily average in 2024 was 4,501 compared to 3,214 in 2023. Cumulative year to date weekend ridership is up 22.6% compared to 2023.

Ridership Over Last 12 Months: September through August							
	2020/2021	2021/22	% Change	2022/23	% Change	2023/24	% Change
Total	776,545	1,361,305	75.30%	1,497,531	10.01%	1,655,897	10.58%
Weekday	616,194	1,080,126	75.29%	1,228,607	13.75%	1,345,704	9.53%
Peak	366,937	679,641	85.22%	811,864	19.45%	850,700	4.78%
Off Peak	249,257	400,485	60.67%	416,743	4.06%	495,004	18.78%
Weekend	160,351	281,179	75.35%	268,924	-4.36%	310,193	15.35%
South Bend	98,880	174,622	76.60%	162,899	-6.71%	168,933	3.70%

Revenue

The number of tickets sold in August was up 19.1% when comparing 2024 to 2023. Ticket revenue was up 39.7% for 2024 compared to 2023. Sales from digital sources represent 83.4% of ticket sales and 87.4% of ticket revenue.

Total Ticket Sales: August						
Method of Sale	Tickets			Revenue		
	2023	2024	% Change	2023	2024	% Change
Ticket Agent	36,674	13,469	-63.3%	581,129	281,562	-51.5%
Vending Machine	129,495	163,752	26.5%	1,203,968	1,803,773	49.8%
Conductor	78,824	89,763	13.9%	472,978	641,794	35.7%
Mobile App	277,938	355,806	28.0%	2,994,283	4,612,041	54.0%
Total	522,931	622,790	19.1%	5,252,359	7,339,170	39.7%

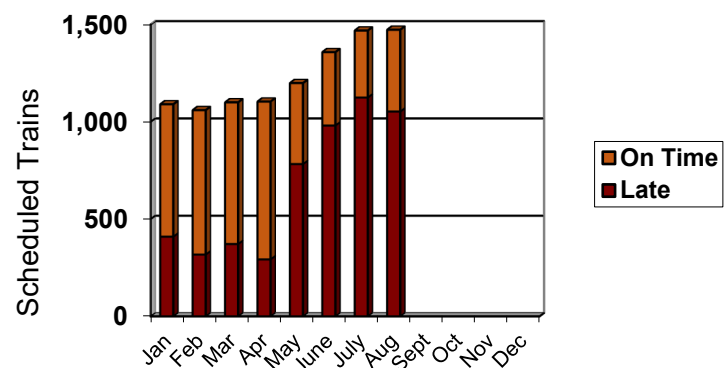
On Time Performance

Rush Hour – Overall, 74.9% of A.M. and P.M. rush hour trains were on time in August 2024 compared to 84.1% in 2023. A train is considered to be on time when it arrives at its terminal within 5 minutes and 59 seconds of its scheduled arrival time (industry standard). 59.67% of all rush hour trains arrived at their terminal station within 10 minutes of the scheduled arrival time. 37.8% of westbound morning rush hour service was on time compared to 93.7% in 2023; while eastbound rush hour trains reported an on-time performance of 12.9% compared to 73.4% in 2023. A total of 141 out of 285 westbound rush hour trains were delayed in August. Of those 141, 32 experienced delays greater than 15 minutes. Eastbound rush hour trains had a total of 194 out of 219 trains delayed in August. Of those 194, 99 experienced delays greater than 15 minutes.¹

August 2024 Rush Hour

Range	TOTAL			PERCENTAGE		
	am	pm	total	am	pm	total
6-10	70	40	110	24.6%	18.3%	21.9%
11-15	57	51	108	20.1%	23.3%	21.5%
16-20	33	34	67	11.6%	15.5%	13.3%
21-30	6	35	41	2.1%	16.0%	8.2%
31-59	7	13	20	2.5%	5.9%	4.0%
60+	2	4	6	0.7%	1.8%	1.2%
Annulled	2	1	3			
Total Late	175	177	352	61.6%	80.8%	70.0%
On time	109	42	151	38.4%	19.2%	30.0%
Total ran	284	219	503	100.0%	100.0%	100.0%

Overall – The South Shore Line scheduled 1,478 trains in August and experienced 1,053 delays in excess of 5 minutes (ranging from 6-310) with median delay of 15 minutes. August of 2024 experienced 5 annulled trains. In August 2023, the South Shore Line scheduled 1,149 trains with 307 delays in excess of 5 minutes (ranging from 6-120 minutes) with a median delay of 17 minutes. August of 2023 experienced 22 annulled trains.



¹ Weekday rush-hour trains operate 13 westbound and 10 eastbound per day.

Cumulative On Time Comparison		
<i>Thru August</i>	2023	2024
Weekday	80.2%	47.0%
Peak	87.8%	53.1%
Off-peak	75.1%	43.0%
Weekend	62.0%	45.7%
Overall	77.2%	46.8%

Delays caused by railroad maintenance. Besides the unexpected delays, passengers may also experience delays caused by railroad construction and maintenance projects. Every effort is made to schedule this work during off-peak and weekends to keep the impact of delays to a minimum. We also post service bulletins in the stations and on our website in advance of anticipated delays.

Currently a joint construction project between NICTD and Metra is ongoing in an effort to make significant improvements to the service these agencies are able to provide in downtown Chicago. This construction will cause delays from time to time, but the two agencies are working closely together to minimize these delays as much as possible.

August 2024 Ridership Report

Annulled Trains or Delays in Excess of 59 Minutes			
Date	Train #	Minutes	Reason
1/8/24	20	104	Animal on tracks.
1/11/24	20	62	Delayed by Amtrak.
1/14/24	503	69	Delayed by bussing.
1/14/24	505	104	Extreme weather took down catenary wire.
1/14/24	506	Annulled	Extreme weather took down catenary wire.
1/14/24	507	Annulled	Extreme weather took down catenary wire.
1/14/24	508	109	Extreme weather took down catenary wire.
1/14/24	510	112	Extreme weather took down catenary wire.
1/14/24	511	62	Extreme weather took down catenary wire.
1/14/24	605	120	Extreme weather took down catenary wire.
1/15/24	604	90	Late turn of equipment.
1/16/24	6	75	Railcar equipment issues.
1/16/24	14	101	Late turn of equipment.
1/16/24	17	Annulled	Extreme weather.
1/16/24	18	67	Late turn of equipment.
1/16/24	22	69	Delayed by passing passenger train.
1/16/24	110	Annulled	Railcar equipment issues.
1/16/24	111	Annulled	Extreme weather.
1/16/24	112	81	Railcar equipment issues.
1/16/24	114	74	Delayed by passing passenger train.
1/16/24	121	75	Railcar equipment issues.
1/16/24	209	Annulled	Extreme weather.
1/16/24	216	Annulled	Extreme weather.
1/16/24	217	Annulled	Extreme weather.
1/16/24	218	Annulled	Extreme weather.
1/16/24	220	Annulled	Extreme weather.
1/16/24	222	Annulled	Extreme weather.
1/16/24	422	Annulled	Extreme weather.
1/17/24	11	95	Delayed by track issues.
1/17/24	18	64	Late turn of equipment.
1/17/24	22	83	Late turn of equipment.
1/17/24	111	60	Delayed by track issues.
1/18/24	20	63	Late turn of equipment.
1/19/24	7	69	Railcar equipment issues.
1/19/24	17	75	Railcar equipment issues.
1/19/24	18	111	Extreme weather.
1/21/24	504	125	Railcar equipment issues.
1/21/24	605	Annulled	Railcar equipment issues.
1/22/24	22	81	Railcar equipment issues.

August 2024 Ridership Report

Annulled Trains or Delays in Excess of 59 Minutes			
Date	Train #	Minutes	Reason
2/15/24	20	68	PTC issue delay.
2/16/24	20	77	Late turn of equipment/speed restrictions.
2/17/24	507	63	Delays due to bussing.
2/26/24	9	62	Metra PTC issue delay.
2/26/24	18	104	Metra PTC and passenger boarding.
2/26/24	116	76	Metra PTC issue delay.
2/26/24	216	65	Metra PTC issue delay.
2/27/24	17	79	Metra signal problems.
2/27/24	18	103	Train/automobile incident.
2/27/24	111	60	Train car equipment failure.
2/27/24	119	Annulled	Delayed by earlier trains track issues.
2/27/24	217	Annulled	Delayed by earlier trains track issues.
2/27/24	222	Annulled	Delayed by earlier trains track issues.
3/15/24	20	67	Late turn of equipment/speed restrictions.
3/15/24	102	Annulled	PTC issue delay.
3/15/24	203	Annulled	PTC issue delay.
3/15/24	205	61	Late turn of equipment/speed restrictions.
3/15/24	401	Annulled	Late turn of equipment/speed restrictions.
3/27/24	22	60	Delayed by passenger train late to MED.
4/4/24	117	81	PTC issue delay.
4/25/24	7	95	Catenary wire down in Gary.
4/25/24	11	Annulled	Catenary wire down in Gary.
4/25/24	14	110	Catenary wire down in Gary.
4/25/24	216	Annulled	Catenary wire down in Gary.
4/26/24	116	79	PTC issue delay.
5/15/24	113	74	Railcar equipment issues.
5/15/24	224	74	Railcar equipment issues.
5/22/24	7	131	PTC issue delay.
5/22/24	20	92	PTC issue delay.
5/22/24	28	69	Late turn of equipment.
5/22/24	109	Annulled	PTC outage
5/22/24	120	Annulled	PTC outage
5/22/24	207	115	PTC issue delay.
5/22/24	209	135	PTC issue delay.
5/22/24	220	Annulled	PTC outage
5/22/24	224	Annulled	PTC outage
5/23/24	28	70	Late turn of equipment.
5/23/24	31	65	PTC issue delay.
5/23/24	118	71	Metra police activity delays.
5/23/24	128	60	Passenger medical emergency.
5/23/24	226	Annulled	PTC issue delay.
5/23/24	207	60	Metra police activity delays.
5/31/24	133	68	Metra track switch failure.
6/3/2024	133	60	Busing delays

August 2024 Ridership Report

Annulled Trains or Delays in Excess of 59 Minutes			
Date	Train #	Minutes	Reason
6/5/24	30	82	Power outage on Metra.
6/5/24	133	114	Power outage on Metra.
6/8/24	703	Annulled	Passenger train interference.
6/10/24	7	73	Delayed by train/vehicle accident.
6/10/24	14	Annulled	Collision with a vehicle.
6/10/24	20	60	Delayed by train/vehicle accident.
6/10/24	103	127	Delayed by train/vehicle accident.
6/10/24	105	137	Delayed by train/vehicle accident.
6/10/24	114	139	Delayed by train/vehicle accident.
6/10/24	118	116	Delayed by train/vehicle accident.
6/10/24	205	129	Delayed by train/vehicle accident.
6/10/24	214	Annulled	Delayed by train/vehicle accident.
6/10/24	216	Annulled	Delayed by train/vehicle accident.
6/11/24	135	60	Delay do to bussing and freight train.
6/13/24	121	126	Train car mechanical issues.
6/14/24	30	67	Metra PTC issue delay.
6/17/24	30	60	Late turn of equipment, speed restrictions.
6/20/24	13	Annulled	NIPSCO Gas Line Issue
6/20/24	17	361	NIPSCO Gas Line Issue
6/20/24	29	Annulled	NIPSCO Gas Line Issue
6/20/24	30	125	NIPSCO Gas Line Issue
6/20/24	31	Annulled	NIPSCO Gas Line Issue
6/20/24	113	Annulled	NIPSCO Gas Line Issue
6/20/24	117	Annulled	NIPSCO Gas Line Issue
6/20/24	119	185	NIPSCO Gas Line Issue
6/20/24	121	Annulled	NIPSCO Gas Line Issue
6/20/24	124	Annulled	NIPSCO Gas Line Issue
6/20/24	126	Annulled	NIPSCO Gas Line Issue
6/20/24	127	Annulled	NIPSCO Gas Line Issue
6/20/24	128	Annulled	NIPSCO Gas Line Issue
6/20/24	131	Annulled	NIPSCO Gas Line Issue
6/20/24	224	Annulled	NIPSCO Gas Line Issue
6/20/24	225	Annulled	NIPSCO Gas Line Issue
6/20/24	226	Annulled	NIPSCO Gas Line Issue
6/20/24	228	Annulled	NIPSCO Gas Line Issue
6/20/24	428	Annulled	NIPSCO Gas Line Issue
6/25/24	20	Annulled	Trees and powerlines are down.
6/25/24	103	87	Substation power outage.
6/25/24	105	84	Substation power outage.
6/25/24	117	Annulled	Train car mechanical issues.
6/25/24	118	64	Substation power outage.
6/25/24	216	90	Substation power outage.
6/26/24	228	64	Metra PTC issue delay.
6/30/24	506	64	Train car equipment failure.

August 2024 Ridership Report

Annulled Trains or Delays in Excess of 59 Minutes			
<u>Date</u>	<u>Train</u>	<u>Min. Late</u>	<u>Reason</u>
7/1/24	7	Annulled	Wires down at Millennium and Van Buren
7/1/24	14	162	Wires down at Millennium and Van Buren
7/1/24	20	105	Wires down at Millennium and Van Buren
7/1/24	105	94	Wires down at Millennium and Van Buren
7/1/24	111	94	Wires down at Millennium and Van Buren
7/1/24	112	310	Wires down at Millennium and Van Buren
7/1/24	114	204	Wires down at Millennium and Van Buren
7/1/24	118	201	Wires down at Millennium and Van Buren
7/1/24	120	82	Wires down at Millennium and Van Buren
7/1/24	207	Annulled	Wires down at Millennium and Van Buren
7/1/24	209	Annulled	Wires down at Millennium and Van Buren
7/1/24	214	253	Wires down at Millennium and Van Buren
7/1/24	216	240	Wires down at Millennium and Van Buren
7/1/24	222	Annulled	Wires down at Millennium and Van Buren
7/5/24	133	64	Train car equipment failure.
7/7/24	600	75	Train car equipment failure.
7/13/24	506	60	METRA signal issue with construction.
7/15/24	28	100	METRA PTC Issue.
7/15/24	30	120	METRA PTC Issue.
7/15/24	31	75	METRA power issue.
7/15/24	127	Annulled	METRA Power Outage at Museum Campus
7/15/24	128	106	METRA PTC Issue.
7/15/24	133	247	Late turn of equipment, weather delay.
7/15/24	228	85	METRA PTC Issue.
7/16/24	22	137	METRA PTC Issue.
7/16/24	25	97	METRA PTC Issue.
7/16/24	29	80	METRA PTC Issue.
7/16/24	30	62	METRA PTC Issue.
7/16/24	123	80	METRA PTC Issue.
7/16/24	126	84	METRA PTC Issue.
7/16/24	127	67	METRA PTC Issue.
7/16/24	222	65	METRA PTC Issue.
7/16/24	225	69	METRA PTC Issue.
7/16/24	228	75	Late turn of equipment.
7/17/24	118	92	Police activity at Metra station.
7/22/24	28	67	Late turn of equipment.
7/23/24	101	74	Train car equipment failure.
7/25/24	29	72	Pedestrian incident on the rail.
7/25/24	131	Annulled	Pedestrian incident on the rail.
7/26/24	7	118	Gas Leak passengers bused to Miller.
7/26/24	103	134	Mechanical problems at Carroll Ave Station.
7/26/24	118	135	Potential gas leak at Miller Station.
7/26/24	131	114	Overhead Wire damage west of Gary
7/26/24	133	201	Overhead Wire damage west of Gary

August 2024 Ridership Report

Annulled Trains or Delays in Excess of 59 Minutes			
Date	Train	Min. Late	Reason
7/26/24	135	Annulled	Overhead Wire damage west of Gary
7/26/24	214	Annulled	NIPSCO Utility Problem
7/27/24	507	64	Police activity for disruptive passengers.
7/27/24	601	94	Wires down at Millennium and Van Buren
7/29/24	30	62	Late turn of equipment.
7/29/24	118	72	PTC issue delay.
7/30/24	30	67	Late turn of equipment.
7/30/24	115	65	Police activity at Metra station.
7/31/24	29	67	Cable theft at Birchim West.
7/31/24	30	127	Cable theft at Birchim West.
7/31/24	31	104	Cable theft at Birchim West.
7/31/24	135	79	Late turn of equipment.
8/2/24	113	75	PTC Issues on Metra
8/2/24	135	62	Metra restricted speeds compounding delays.
8/5/24	30	62	Late turn of equipment.
8/7/24	114	84	Police Activity causing train to be delayed.
8/7/24	121	66	Railcar equipment delays.
8/8/24	135	69	PTC Issue.
8/8/24	212	61	Possible gas leak in Gary causing the delay.
8/9/24	30	63	Metra Delay
8/9/24	135	72	Medical emergency at Hegewisch.
8/23/24	22	99	PTC issue causing train to wait on another train.
8/25/24	605	73	PTC issue causing train to wait on another train.
8/25/24	608	60	PTC issue causing train to wait on another train.
8/26/24	17	72	Train loss communication at Hegewisch.
8/26/24	25	66	Train loss communication at Birchum.
8/26/24	30	74	Communication loss for train.
8/26/24	121	60	Communication loss for train.
8/26/24	228	79	Communication loss for train.
8/26/24	430	65	Late turn of equipment due to PTC issue.
8/26/24	432	64	Police activity at Grandview Station.
8/27/24	130	130	Metra Delay
8/27/24	216	ANNULLED	Extreme weather.
8/27/24	432	ANNULLED	Extreme weather.
8/28/24	7	64	Gas smell at Gary Metro.
8/28/24	120	108	Gas smell at Gary Metro.
8/28/24	225	ANNULLED	PTC issues.
8/28/24	232	ANNULLED	PTC issues.
8/28/24	400	ANNULLED	Obstruction on the track, passengers bussed.
8/29/24	131	86	Metra Delay
8/29/24	232	68	Metra Delay

August 2024 Ridership Report

Ridership Report

	2022 Passengers	Work Days	2023 Passengers	Work Days	2024 Passengers	Work Days	Change 23/24
Monthly Ridership							
January	66,870	21	105,869	21	103,033	22	-2.7%
February	76,350	20	105,045	20	115,214	21	9.7%
March	114,014	23	126,910	23	130,771	21	3.0%
April	115,914	21	117,539	20	130,179	22	10.8%
May	123,155	21	129,890	22	147,524	22	13.6%
June	138,763	22	139,216	22	155,377	20	11.6%
Cumulative Comparison							
January	66,870	21	105,869	21	103,033	22	-2.7%
February	143,220	41	210,914	41	218,247	43	3.5%
March	257,234	64	337,824	64	349,018	64	3.3%
April	373,148	85	455,363	84	479,197	86	5.2%
May	496,303	106	585,253	106	626,721	108	7.1%
June	635,066	128	724,469	128	782,098	128	8.0%
Average Weekday Ridership							
January	2,539		4,243		4,123		-2.8%
February	3,166		4,432		4,729		6.7%
March	4,134		4,733		4,950		4.6%
April	4,501		4,723		5,049		6.9%
May	4,624		4,957		5,532		11.6%
June	5,084		5,289		5,980		13.1%
Average Weekday Peak Period Ridership							
January	1,700		3,101		2,923		-5.7%
February	2,121		3,115		3,335		7.1%
March	2,742		3,201		3,254		1.7%
April	2,943		3,175		3,488		9.9%
May	3,056		3,384		3,455		2.1%
June	3,208		3,364		3,433		2.1%
Average Weekday Off-Peak Ridership							
January	839		1,142		1,158		1.4%
February	1,045		1,317		1,393		5.8%
March	1,392		1,532		1,696		10.7%
April	1,561		1,549		1,561		0.8%
May	1,569		1,573		2,077		32.0%
June	1,876		1,925		2,547		32.3%

August 2024 Ridership Report

Ridership Report

	2022 Passengers	Work Days	2023 Passengers	Work Days	2024 Passengers	Work Days	Change 23/24
Average Weekend/Holiday Ridership (per day)							
January	1,355		1,864		1,474		-20.9%
February	1,629		2,052		1,989		-3.1%
March	2,366		2,256		2,682		18.9%
April	2,376		2,306		1,910		-17.2%
May	2,605		2,314		2,868		23.9%
June	3,364		2,858		3,578		25.2%
Monthly South Bend Ridership							
January	8,972		9,775		8,213		-16.0%
February	8,940		8,829		8,510		-3.6%
March	13,530		12,919		13,427		3.9%
April	14,608		13,773		12,596		-8.5%
May	15,290		11,791		16,802		42.5%
June	15,014		12,175		17,947		47.4%

August 2024 Ridership Report

Ridership Report

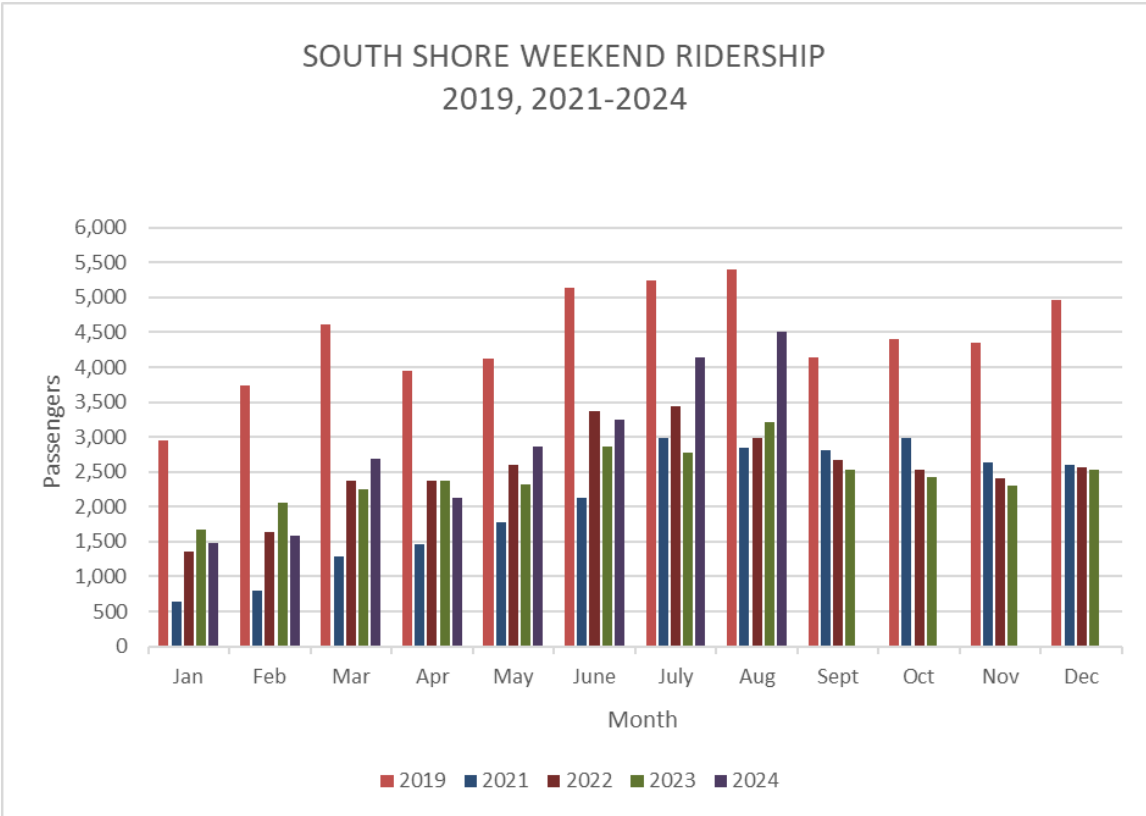
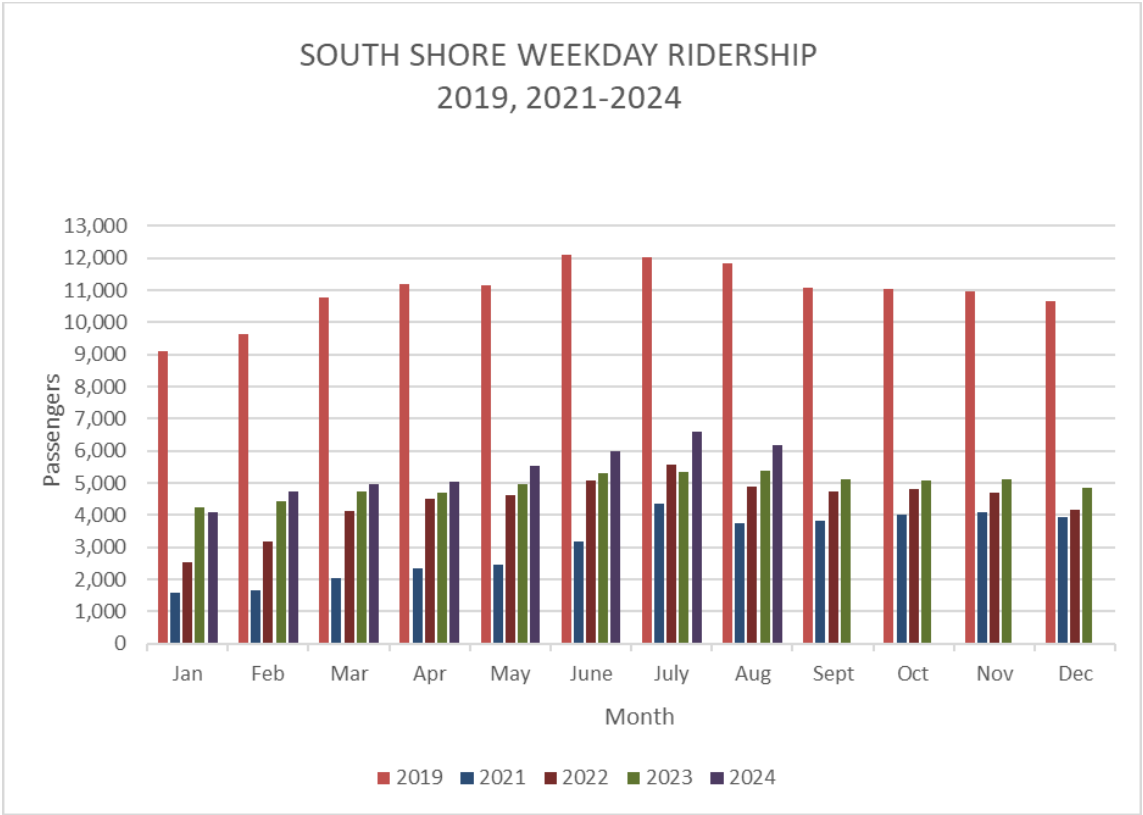
	2022 Passengers	Work Days	2023 Passengers	Work Days	2024 Passengers	Work Days	Change 23/24
MONTHLY RIDERSHIP							
July	149,051	20	137,216	20	182,458	22	33.0%
August	136,622	23	149,901	23	177,065	22	18.1%
September	123,766	21	127,676	20			
October	126,386	21	133,937	22			
November	120,650	22	128,498	22			
December	115,143	21	125,142	20			
CUMULATIVE COMPARISON							
July	784,117	148	861,685	148	964,563	150	11.9%
August	920,739	171	1,011,586	171	1,141,628	172	12.9%
September	1,044,505	192	1,139,262	191			
October	1,170,891	213	1,273,199	213			
November	1,291,541	235	1,401,697	235			
December	1,406,684	256	1,526,839	255			
Average Weekday Ridership							
July	5,556		5,336		6,603		23.7%
August	4,904		5,399		6,163		14.2%
September	4,746		5,119				
October	4,817		5,093				
November	4,713		4,663				
December	4,383		4,861				
Thru December	4,418	256	4,946	255			
Average Weekday Peak Period Ridership							
July	3,243		3,293		3,645		10.7%
August	3,095		3,429		3,301		-3.7%
September	3,156		3,443				
October	3,229		3,472				
November	3,064		3,167				
December	2,654		2,945				
Thru December	2,844	256	3,274	255			
Average Weekday Off-Peak Ridership							
July	2,314		2,043		2,957		44.7%
August	1,809		1,970		2,862		45.3%
September	1,590		1,676				
October	1,588		1,621				
November	1,649		1,733				
December	1,729		1,916				
Thru December	1,574	256	1,672	255			

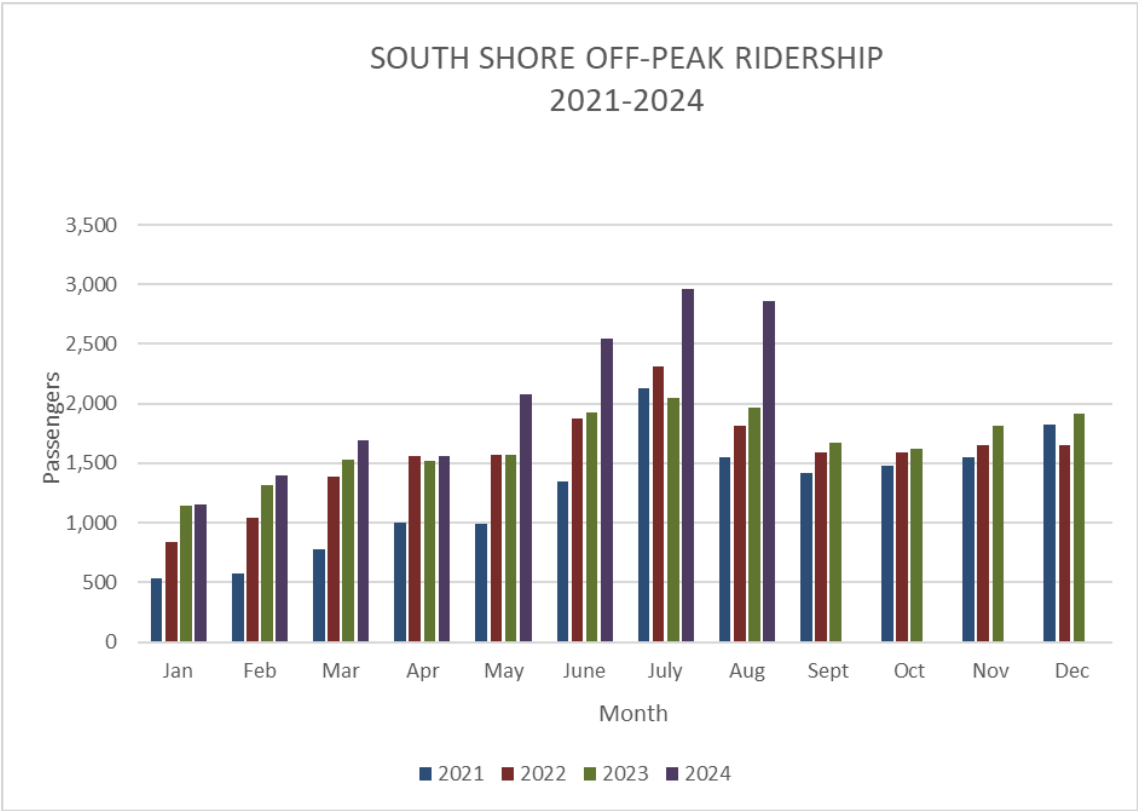
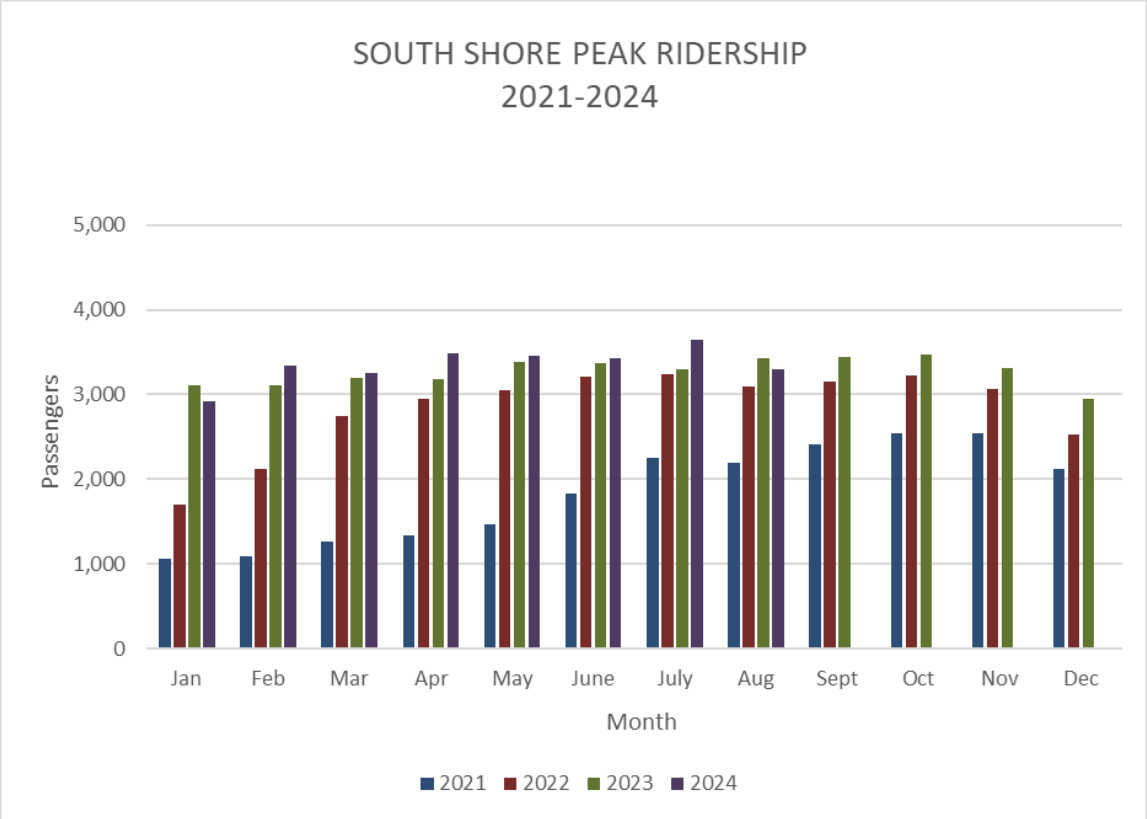
August 2024 Ridership Report

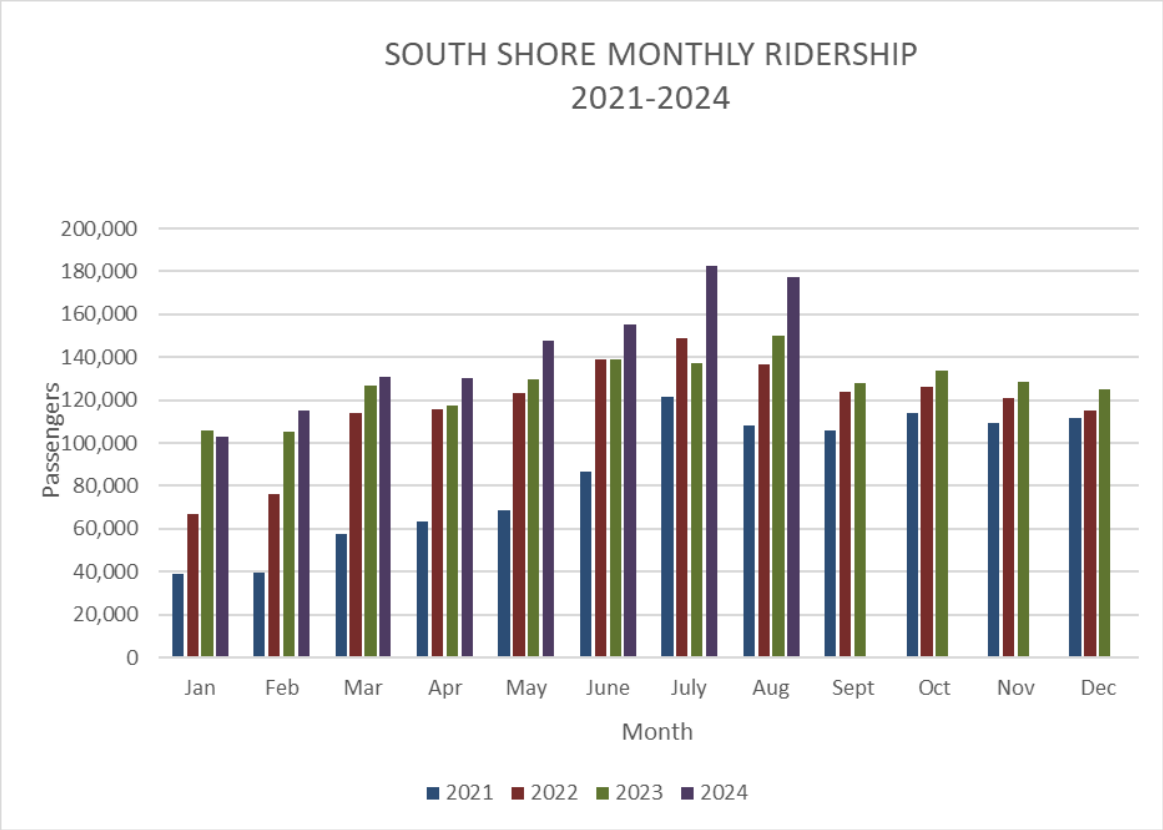
Ridership Report

	2022 Passengers	Days	2023 Passengers	Days	2024 Passengers	Days	Change 23/24
AVERAGE WEEKEND/HOLIDAY RIDERSHIP (per day)							
July	3,348		2,772		4,133		49.1%
August	2,979		3,214		4,501		40.0%
September	2,678		2,530				
October	2,523		2,433				
November	2,409		2,297				
December	2,309		2,538				
Thru December	2,529	109	2,438	110			
MONTHLY SOUTH BEND RIDERSHIP							
July	18,102		13,964		22,167		58.7%
August	12,335		12,291		19,623		59.7%
September	13,613		11,767				
October	16,039		12,390				
November	14,639		12,190				
December	13,374		13,338				

August 2024 Ridership Report







Percent on Time: August, 2024

Peak		
Train	Days Late	% on Time
400	0	100.0%
102	16	27.3%
104	3	86.4%
106	4	81.8%
8	5	77.3%
108	19	13.6%
110	12	45.5%
112	18	18.2%
212	10	23.1%
14	8	38.5%
114	21	4.5%
16	4	55.6%
116	9	0.0%
214	13	0.0%
216	15	28.6%
218	5	44.4%
118	13	0.0%
11	0	0.0%
111	0	0.0%
113	0	0.0%
115	15	31.8%
17	12	45.5%
117	17	22.7%
217	0	0.0%
119	22	0.0%
121	21	4.5%
123	18	18.2%
25	21	4.5%
225	19	9.5%
127	21	4.5%
29	11	50.0%
Total	352	30.0%
Westbound	175	38.4%
Eastbound	177	19.2%

Off-Peak		
Train	Days Late	% on Time
220	18	17.4%
20	19	13.0%
222	0	0.0%
22	0	0.0%
120	18	4.5%
124	7	17.4%
224	20	4.5%
126	19	4.5%
226	19	54.5%
28	13	8.7%
128	18	4.5%
428	3	68.2%
228	11	40.9%
30	21	4.5%
430	2	90.9%
432	2	100.0%
401	0	95.5%
203	10	63.6%
403	0	95.5%
205	6	81.8%
207	18	42.9%
7	22	4.8%
109	19	4.5%
209	20	4.8%
201	16	0.0%
405	0	95.5%
103	15	27.3%
105	16	4.5%
111	21	18.2%
13	13	4.3%
113	18	0.0%
31	13	8.7%
131	20	4.8%
133	21	0.0%
135	13	9.1%
101	16	4.5%
Total	491	27.9%
Westbound	61	27.0%
Eastbound	279	28.5%

Weekend/Holiday		
Train	Days Late	% on Time
600	3	66.7%
502	7	22.2%
504	7	22.2%
606	8	11.1%
506	8	11.1%
608	6	33.3%
508	9	0.0%
610	9	33.3%
510	6	33.3%
503	9	0.0%
603	9	0.0%
605	9	0.0%
505	9	0.0%
507	9	0.0%
509	9	0.0%
511	9	0.0%
613	4	55.6%
601	4	55.6%
701	0	100.0%
703	0	100.0%
952	0	100.0%
954	0	100.0%
956	0	100.0%
Total	134	25.6%
Westbound	63	22.2%
Eastbound	71	28.3%

Trains on time less than
95% peak and 85% off peak.

August 2024 Ridership Report

REASONS (weekday)		
AMT	7	0.8%
CAR	19	2.0%
CAT	2	0.2%
DBS	1	0.1%
DDS	0	0.0%
DMW	7	0.8%
DSR	28	3.0%
DSS	16	1.7%
FRR	6	0.6%
FTI	5	0.5%
HLD	3	0.3%
LMU	48	5.2%
MET	429	46.1%
OET	0	0.0%
OPR	14	1.5%
OTH	40	4.3%
PAS	223	24.0%
POL	7	0.8%
PTC	1	0.1%
PTI	60	6.4%
SUB	0	0.0%
SVS	1	0.1%
TOD	0	0.0%
TRK	4	0.4%
TRS	1	0.1%
UTL	0	0.0%
VAN	3	0.3%
WTR	6	0.6%
TOTAL	931	100.0%

REASONS (weekend)		
AMT	0	0.0%
CAR	0	0.0%
CAT	0	0.0%
DBS	0	0.0%
DDS	0	0.0%
DMW	0	0.0%
DSR	4	2.8%
DSS	3	2.1%
FRR	1	0.7%
FTI	1	0.7%
HLD	0	0.0%
LMU	0	0.0%
MET	56	39.2%
OET	0	0.0%
OPR	1	0.7%
OTH	1	0.7%
PAS	70	49.0%
POL	0	0.0%
PTC	0	0.0%
PTI	3	2.1%
SUB	0	0.0%
SVS	0	0.0%
TOD	0	0.0%
TRK	2	1.4%
TRS	0	0.0%
UTL	0	0.0%
VAN	0	0.0%
WTR	1	0.7%
TOTAL	143	100%

AMT-Amtrak delay
 CAR-Car or equipment failure
 DBS-Delays due to busing
 DDS-Debris strike
 DMW-Maintenance of Way work
 DSR-Speed Restriction
 DSS-Reduced speed due to restrictive signal
 FRR-Freight train interference from crossing
 FTI-Freight train interference on NICTD track
 HLD-Station delay related to passenger boarding
 LMU-Late make up (includes turn of equipment)
 MET-Metra delays

OET-Operational efficiency testing
 OPR-Operational delay
 OTH-Other delays
 PAS-Passenger boarding
 PTC-Positive train control delays
 PTI-Passenger train interference
 SUB-Substation
 SVS-Servicing (adding/removing equipment)
 TOD-Train order delay
 TRK-Track/wayside malfunction
 UTL-Utility power outage
 WTR-Weather

NICTD follows the industry standard in defining a train as on time if it arrives at its terminal within 5 minutes and 59 seconds.

August 2024 Ridership Report

Cumulative Percent on Time Thru August, 2024

Peak		
Train	Days Late	% on Time
102	56	67.1%
104	18	89.5%
6	11	88.3%
106	32	81.3%
8	19	75.3%
108	79	53.8%
110	59	65.3%
112	77	55.0%
212	38	44.9%
14	52	23.5%
114	81	52.6%
214	67	58.6%
216	34	54.7%
118	63	8.7%
11	31	66.7%
111	64	31.2%
113	28	70.2%
115	89	48.0%
17	115	32.4%
117	123	27.2%
217	9	90.2%
119	114	32.9%
121	75	1.3%
123	71	7.8%
25	74	3.9%
225	73	2.7%
127	66	12.0%
29	57	26.0%
Total	1,693	49.4%
Westbound	704	61.7%
Eastbound	989	34.5%

Off-Peak		
Train	Days Late	% on Time
14	40	57.4%
216	22	76.1%
116	25	73.4%
218	25	73.1%
18	81	13.8%
118	36	61.7%
220	75	53.4%
20	130	19.8%
222	98	41.7%
22	151	11.7%
422	13	86.0%
424	2	97.9%
120	71	7.8%
124	49	27.9%
224	72	5.3%
126	72	5.3%
226	45	40.8%
28	63	8.7%
128	70	7.9%
428	16	76.1%
228	39	48.7%
30	74	3.9%
430	5	93.5%
432	12	92.5%
401	8	95.3%
203	76	55.3%
403	14	91.8%
205	49	71.3%
207	81	52.4%
7	138	18.8%
107	24	74.5%
9	73	22.3%
109	108	36.5%
209	112	33.7%
19	18	80.9%
121	18	80.9%
123	26	72.3%
201	68	11.7%
405	1	98.7%
103	48	37.7%
105	61	20.8%
111	71	7.8%
13	66	2.9%
113	72	5.3%
31	66	2.9%
131	72	4.0%
133	76	1.3%
135	64	5.9%
101	81	52.6%
Total	2,777	46.6%
Westbound	1286	46.1%
Eastbound	1491	47.1%

Weekend/Holiday		
Train	Days Late	% on Time
600	19	72.1%
502	38	44.1%
504	50	26.5%
606	39	42.6%
506	47	29.9%
608	22	67.6%
508	37	45.6%
610	37	45.6%
510	29	57.4%
503	54	20.6%
603	46	32.4%
605	45	32.8%
505	48	29.4%
507	60	10.4%
509	50	26.5%
511	40	41.2%
613	36	47.1%
601	23	66.2%
701	0	100.0%
703	3	95.5%
952	0	100.0%
954	0	100.0%
956	0	100.0%
Total	723	46.7%
Westbound	318	48.0%
Eastbound	405	45.6%

Trains on time less than
95% peak and 85% off peak.

Cumulative Reasons for Delays Thru August, 2024

REASONS (weekday)		
AMT	33	0.9%
CAR	84	2.3%
CAT	7	0.2%
DBS	4	0.1%
DDS	1	0.0%
DMW	365	10.2%
DSR	220	6.2%
DSS	91	2.5%
FRR	15	0.4%
FTI	22	0.6%
HLD	17	0.5%
LMU	163	4.6%
MET	1132	31.7%
OET	3	0.1%
OPR	83	2.3%
OTH	170	4.8%
PAS	611	17.1%
POL	15	0.4%
PTC	5	0.1%
PTI	331	9.3%
SUB	5	0.1%
SVS	12	0.3%
TOD	0	0.0%
TRK	137	3.8%
TRS	21	0.6%
UTL	4	0.1%
VAN	6	0.2%
WTR	18	0.5%
TOTAL	3,575	100.0%

REASONS (weekend)		
AMT	6	0.9%
CAR	19	2.9%
CAT	5	0.8%
DBS	0	0.0%
DDS	1	0.2%
DMW	96	14.7%
DSR	52	8.0%
DSS	21	3.2%
FRR	6	0.9%
FTI	5	0.8%
HLD	6	0.9%
LMU	14	2.1%
MET	143	21.9%
OET	0	0.0%
OPR	11	1.7%
OTH	27	4.1%
PAS	177	27.1%
POL	1	0.2%
PTC	0	0.0%
PTI	37	5.7%
SUB	0	0.0%
SVS	6	0.9%
TOD	0	0.0%
TRK	9	1.4%
TRS	1	0.2%
UTL	0	0.0%
VAN	0	0.0%
WTR	10	1.5%
TOTAL	653	100.0%

TOTAL		
AMT	39	0.9%
CAR	103	2.4%
CAT	12	0.3%
DBS	4	0.1%
DDS	2	0.0%
DMW	461	10.9%
DSR	272	6.4%
DSS	112	2.6%
FRR	21	0.5%
FTI	27	0.6%
HLD	23	0.5%
LMU	177	4.2%
MET	1275	30.2%
OET	3	0.1%
OPR	94	2.2%
OTH	197	4.7%
PAS	788	18.6%
POL	16	0.4%
PTC	5	0.1%
PTI	368	8.7%
SUB	5	0.1%
SVS	18	0.4%
TOD	0	0.0%
TRK	146	3.5%
TRS	22	0.5%
UTL	4	0.1%
VAN	6	0.1%
WTR	28	0.7%
TOTAL	4,228	100.0%

AMT-Amtrak delay
 CAR-Car or equipment failure
 DBS-Delays due to busing
 DDS-Debris strike
 DMW-Maintenance of Way work
 DSR-Speed Restriction
 DSS-Reduced speed due to restrictive signal
 FRR-Freight train interference from crossing
 FTI-Freight train interference on NICTD track
 HLD-Station delay related to passenger boarding
 LMU-Late make up (includes turn of equipment)
 MET-Metra delays

OET-Operational efficiency testing
 OPR-Operational delay
 OTH-Other delays
 PAS-Passenger boarding
 PTC-Positive train control delays
 PTI-Passenger train interference
 SUB-Substation
 SVS-Servicing (adding/removing equipment)
 TOD-Train order delay
 TRK-Track/wayside malfunction
 UTL-Utility power outage
 WTR-Weather

NICTD follows the industry standard in defining a train as on time if it arrives at its terminal within 5 minutes and 59 seconds.

August 2024 Ridership Report

RUSH HOUR* TRAIN DELAYS - August 2024 (minutes late)

ROCK HOOK TRAIN DEPARTS - August 2024 (minutes late)																											
Train	Arrive	Thu 1	Fri 2	Mon 5	Tue 6	Wed 7	Thu 8	Fri 9	Mon 12	Tue 13	Wed 14	Thu 15	Fri 16	Mon 19	Tue 20	Wed 21	Thu 22	Fri 23	Mon 26	Tue 27	Wed 28	Thu 29	Fri 30	Days Late	Days Ran	% On Time	
400	2:08a																				A			0	8	100.0%	
102	5:40a		14	9	8	12	7	12	7	8	11	32	10	6	13			19	9		9			16	22	27.3%	
104	6:12:00a											10				8		12						3	22	86.4%	
106	6:38:00a	16						8			13										7			4	22	81.8%	
8	6:58a			7									6		7					8	8			5	22	77.3%	
108	7:35	10	20	10	8	11	10	8	8	7	10	36	7	10	10	13	8		7	10	10	8		20	22	9.1%	
110	7:51		9		9	7					12	20		21	8	7		9	12		13		12	12	22	45.5%	
112	8:08	18	17	9	10	12	20	10	11	10	10	17	12	17	12	14	13	17		7				18	22	18.2%	
212	7:51a	14				17	61	13	13	6	12	12	14	19									10	13	23.1%		
14	8:17a		8	7	10	10	25	6			10	15											8	13	38.5%		
114	8:21a	11	12	15	12	84	42	15	12	14	8	15	15	17	15	16	14	14	11	14	15	12		21	22	4.5%	
16	8:18a														15	8			16	8			4	9			
116	8:23a														16	17	10	10	20	27	13	13	10	9	9		
214	8:38a	16	17	15	8	14	28	16	14	14	9	12	10	16									13	13	0.0%		
216	8:58a					22	12		10			10	10	20	16	16	33	16	26		17	12	8	14	21	33.3%	
218	8:38a														22	14	35							5	9		
118	9:41a	17	10	39	17	46	20	17	16	18	15	15	15	13									13	13	0.0%		
Train	Depart																										
115	3:28p	22	47	29	34	24		17	29	17	11	14	15	41										12	22	45.5%	
17	4:05p		18		12	8			21			12	12	20						72	30	23	18	17	12	22	45.5%
117	4:28p	13	10	10	19	22	15	13	31	22	16	31	26	22	22	17	10			52	26	12	13	20	22	9.1%	
119	4:42p	18	19	15	16	13	13	11	25	14	17	19	15	18	28	27	27	25	40	18	12	16	13	22	22	0.0%	
121	4:57p	15	11	9	11	66	6	8	21	10	11	12	9	12	23	14	11	24	60	21	7	7		21	22	4.5%	
123	5:05p	11	14	11	8	38	10	8	16	10	10	17	10	10	16	6		17	57	14				18	22	18.2%	
25	5:25p	13	16	40	25	29	19	11	22	22	13	10	12	14	15	15		16	66	22	15	13	12	21	22	4.5%	
225	5:47p	9	9	9	10	27	9	9	9	9	10	9	8	16	20	27	9			16	A	10	6	19	21	9.5%	
127	6:01p		6	37	7	22	6	17	17	11	12	24	13	32	14	23	23	22	46	32	16	11	11	21	22	4.5%	
29	6:25p		10	18	17	20	13	12	14		15	18	10	10			23			32				11	22	50.0%	
High temp		76	82	86	82	83	88	81	77	84	86	87	85	81	74	79	83	86	78	79	82	87	88				
Low temp		48	61	69	65	63	67	68	62	60	65	68	68	61	56	52	63	61	63	56	53	71	67				

* Includes off-peak Trains 14 and 19 for comparative purposes

Temperatures from South Bend

On time

A = Annulled

MONTHLY SUMMARY OF RUSH HOUR ON TIME PERFORMANCE

	MONTHLY SUMMARY OF RUSH HOUR ON TIME PERFORMANCE																	
	January			February			March			April			May			June		
	#Late	#Ran	%On time	#Late	#Ran	%On time	#Late	#Ran	%On time	#Late	#Ran	%On time	#Late	#Ran	%On time	#Late	#Ran	%On time
WB Rush	18	188	90.4%	6	189	96.8%	9	188	95.2%	12	198	93.9%	132	250	47.2%	156	257	39.3%
EB Rush	99	168	41.1%	83	166	50.0%	72	168	57.1%	35	175	80.0%	132	202	34.7%	185	194	4.6%
Total Rush	117	356	67.1%	89	355	74.9%	81	356	77.2%	47	373	87.4%	264	452	41.6%	341	451	24.4%

[illegible]

August 2024 Ridership Report

Cumulative				
Arrive	Train #	Days Late	Days Ran	% On Time
2:08a	400	0	8	100.0%
5:48a	102	55	171	67.8%
6:31	104	18	171	89.5%
6:55	6	11	94	88.3%
6:38	106	32	171	81.3%
6:58	8	19	77	75.3%
7:35	108	79	171	53.8%
7:51a	110	58	169	65.7%
7:35a	112	77	171	55.0%
7:51a	212	41	68	39.7%
8:17a	14	55	67	17.9%
8:31a	114	80	171	53.2%
8:52a	214	69	160	56.9%
10:28a	216	32	75	57.3%
9:41a	118	68	68	0.0%
Depart				
3:28p	115	86	169	49.1%
3:57p	11	30	94	68.1%
4:02p	111	64	94	31.9%
4:28p	113	28	94	70.2%
5:32p	217	8	94	91.5%
4:02p	17	115	170	32.4%
4:28p	117	126	169	25.4%
4:57p	119	113	171	33.9%
5:10p	121	75	76	1.3%
5:28p	123	71	77	7.8%
5:32p	25	74	77	3.9%
5:58p	225	73	75	2.7%
7:15p	127	65	75	13.3%
6:25p	29	71	76	6.6%

Cumulative Rush Hour Thru August						
Range	TOTAL			PERCENTAGE		
	am	pm	total	am	pm	total
6-10	205	289	494	9.6%	16.7%	12.8%
11-15	237	272	509	11.1%	15.7%	13.2%
16-20	116	177	293	5.4%	10.2%	7.6%
21-30	31	155	186	1.5%	8.9%	4.8%
31-59	40	74	114	1.9%	4.3%	2.9%
60+	15	21	36	0.7%	1.2%	0.9%
Annulled	6	14	20			
Total Late	644	988	1632	30.2%	56.9%	42.2%
On time	1490	747	2237	69.8%	43.1%	57.8%
Total ran	2134	1735	3869			

Grand Total All Trains Thru July, 2024						
Range	Peak					
	WB	EB	Off	Wkend	Total	%
6-10	205	289	695	215	1404	12.2%
11-15	237	272	726	201	1436	12.5%
16-20	116	177	490	145	928	8.1%
21-30	31	155	467	139	792	6.9%
31-59	40	74	436	70	620	5.4%
60+	15	21	101	18	155	1.3%
Annulled	6	14	38	4	62	
Total	644	988	2915	788	5335	46.4%
On Time	1490	747	3079	848	6164	53.6%
Total ran	2134	1735	5994	1636	11499	
%On Time	69.8%	43.1%	51.4%	51.8%	53.6%	

August 2024 Rush Hour						
Range	TOTAL			PERCENTAGE		
	am	pm	total	am	pm	total
6-10	70	40	110	24.6%	18.3%	21.9%
11-15	57	51	108	20.1%	23.3%	21.5%
16-20	33	34	67	11.6%	15.5%	13.3%
21-30	6	35	41	2.1%	16.0%	8.2%
31-59	7	13	20	2.5%	5.9%	4.0%
60+	2	4	6	0.7%	1.8%	1.2%
Annulled	2	1	3			
Total Late	175	177	352	61.6%	80.8%	70.0%
On time	109	42	151	38.4%	19.2%	30.0%
Total ran	284	219	503	100.0%	100.0%	100.0%

Year-to-date cumulative			
	#Late	#Ran	%On time
WB Rush	712	1839	61.3%
EB Rush	1030	1511	31.8%
Total Rush	1742	3,350	48.0%