



Monthly Ridership and Performance Report

November 2024



Northern Indiana Commuter Transportation District

November 2024 Monthly Performance Report

Ridership

Overall - Ridership for the month was up 17.1% when compared to 2023. Passenger trips for the month were 150,431 in 2024 and 128,498 in 2023. Cumulative year-to-date ridership was up 15.5% over 2023.

Weekday Travel – Average weekday peak travel was up 1.5% when compared to 2023 while average off peak travel was up 29.7% over 2023 ridership. The combined weekday average in 2024 was 5,724 rides compared to 5,134 in 2023. That is an 11.5% increase for 2024 compared to 2023. Cumulative year to date weekday ridership is up 11.1% over 2023.

Weekend Travel – Weekend ridership was up 56.5% when compared to 2023. The daily average in 2024 was 3,596 compared to 2,297 in 2023. Cumulative year to date weekend ridership is down 3.9% compared to 2023.

Ridership Over Last 12 Months: December through November							
	2020/21	2021/22	% Change	2022/23	% Change	2023/24	% Change
Total	953,922	1,402,902	47.07%	1,516,840	8.12%	1,742,624	14.89%
Weekday	742,173	1,129,460	52.18%	1,251,043	10.76%	1,400,332	11.93%
Peak	445,835	720,851	61.69%	828,342	14.91%	864,458	4.36%
Off Peak	296,338	408,609	37.89%	422,701	3.45%	535,874	26.77%
Weekend	211,749	273,442	29.13%	265,797	-2.80%	342,292	28.78%
South Bend	131,529	168,429	28.05%	154,955	-8.00%	191,601	23.65%

Revenue

The number of tickets sold in November was up 22.4% when comparing 2024 to 2023. Ticket revenue was up 21.2% for 2024 compared to 2023. Sales from digital sources represent 84.2% of ticket sales and 88.8% of ticket revenue.

Total Ticket Sales: November						
Method of Sale	Tickets			Revenue		
	2023	2024	% Change	2023	2024	% Change
Ticket Agent	47,106	13,471	-71.4%	887,490	281,819	-68.2%
Vending Machine	179,826	234,531	30.4%	2,060,266	2,625,707	27.4%
Conductor	111,920	127,686	14.1%	790,244	907,970	14.9%
Mobile App	391,346	518,375	32.5%	5,056,408	6,843,233	35.3%
Total	730,198	894,063	22.4%	8,794,407	10,658,728	21.2%

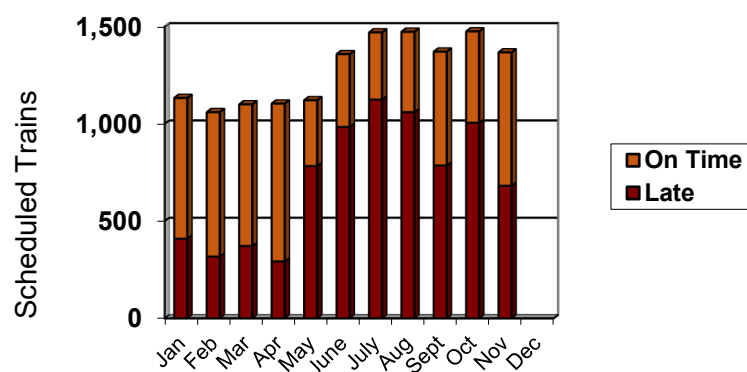
On Time Performance

Rush Hour – Overall, 48.6% of A.M. and P.M. rush hour trains were on time in November 2024 compared to 79.8% in 2023. A train is considered to be on time when it arrives at its terminal within 5 minutes and 59 seconds of its scheduled arrival time (industry standard). 59.7% of all rush hour trains arrived at their terminal station within 10 minutes of the scheduled arrival time. 37.8% of westbound morning rush hour service was on time compared to 94.2% in 2023; while eastbound rush hour trains reported an on-time performance of 19.7% compared to 60.3% in 2023. A total of 123 out of 259 westbound rush hour trains were delayed in November. Of those 123, 56 experienced delays greater than 15 minutes. Eastbound rush hour trains had a total of 194 out of 219 trains delayed in November. Of those 194, 99 experienced delays greater than 15 minutes.¹

November 2024 Rush Hour

Range	TOTAL			Percentages		
	am	pm	Total	am	pm	Total
6-10	55	53	108	21.57%	29.6%	24.9%
11-15	32	32	64	12.55%	17.9%	14.7%
16-20	16	15	31	6.27%	8.4%	7.1%
21-30	5	6	11	1.96%	3.4%	2.5%
31-59	5	4	9	1.96%	2.2%	2.1%
60+	0	0	0	0.00%	0.0%	0.0%
Annulled	5	1	6			
Total Late	113	110	223	44.31%	61.5%	51.4%
On time	142	69	211	55.69%	38.5%	48.6%
Total ran	255	179	434	100.00%	100.0%	100.0%

Overall – The South Shore Line scheduled 1,410 trains in November and experienced 682 delays in excess of 5 minutes (ranging from 6-99) with median delay of 12 minutes. November of 2024 experienced 13 annulled trains. In November 2023, the South Shore Line scheduled 1,169 trains with 576 delays in excess of 5 minutes (ranging from 6-73 minutes) with a median delay of 19 minutes. November of 2023 experienced 0 annulled trains.



¹ Weekday rush-hour trains operate 13 westbound and 9 eastbound per day.

November 2024 Ridership Report

Cumulative On Time Comparison		
<i>Thru November</i>	2023	2024
Weekday	76.0%	53.2%
Peak	85.6%	56.2%
Off-peak	69.6%	51.3%
Weekend	61.5%	44.5%
Overall	73.6%	52.0%

Delays caused by railroad maintenance. Besides the unexpected delays, passengers may also experience delays caused by railroad construction and maintenance projects. Every effort is made to schedule this work during off-peak and weekends to keep the impact of delays to a minimum. We also post service bulletins in the stations and on our website in advance of anticipated delays.

Currently a joint construction project between NICTD and Metra is ongoing in an effort to make significant improvements to the service these agencies are able to provide in downtown Chicago. This construction will cause delays from time to time, but the two agencies are working closely together to minimize these delays as much as possible.

November 2024 Ridership Report

Annulled Trains or Delays in Excess of 59 Minutes			
Date	Train	Min. Late	Reason
1/8/24	20	104	Animal on tracks.
1/11/24	20	62	Delayed by Amtrak.
1/14/24	503	69	Delayed by bussing.
1/14/24	505	104	Extreme weather took down catenary wire.
1/14/24	506	Annulled	Extreme weather took down catenary wire.
1/14/24	507	Annulled	Extreme weather took down catenary wire.
1/14/24	508	109	Extreme weather took down catenary wire.
1/14/24	510	112	Extreme weather took down catenary wire.
1/14/24	511	62	Extreme weather took down catenary wire.
1/14/24	605	120	Extreme weather took down catenary wire.
1/15/24	604	90	Late turn of equipment.
1/16/24	6	75	Railcar equipment issues.
1/16/24	14	101	Late turn of equipment.
1/16/24	17	Annulled	Extreme weather.
1/16/24	18	67	Late turn of equipment.
1/16/24	22	69	Delayed by passing passenger train.
1/16/24	110	Annulled	Railcar equipment issues.
1/16/24	111	Annulled	Extreme weather.
1/16/24	112	81	Railcar equipment issues.
1/16/24	114	74	Delayed by passing passenger train.
1/16/24	121	75	Railcar equipment issues.
1/16/24	209	Annulled	Extreme weather.
1/16/24	216	Annulled	Extreme weather.
1/16/24	217	Annulled	Extreme weather.
1/16/24	218	Annulled	Extreme weather.
1/16/24	220	Annulled	Extreme weather.
1/16/24	222	Annulled	Extreme weather.
1/16/24	422	Annulled	Extreme weather.
1/17/24	11	95	Delayed by track issues.
1/17/24	18	64	Late turn of equipment.
1/17/24	22	83	Late turn of equipment.
1/17/24	111	60	Delayed by track issues.
1/18/24	20	63	Late turn of equipment.
1/19/24	7	69	Railcar equipment issues.
1/19/24	17	75	Railcar equipment issues.
1/19/24	18	111	Extreme weather.
1/21/24	504	125	Railcar equipment issues.
1/21/24	605	Annulled	Railcar equipment issues.
1/22/24	22	81	Railcar equipment issues.
2/4/24	613	90	Extreme weather and ice on the power lines.
2/10/24	610	66	Railcar equipment issues.
2/15/24	20	68	PTC issue delay.
2/16/24	20	77	Late turn of equipment/speed restrictions.
2/17/24	507	63	Delays due to bussing.
2/26/24	9	62	Metra PTC issue delay.
2/26/24	18	104	Metra PTC and passenger boarding.
2/26/24	116	76	Metra PTC issue delay.

November 2024 Ridership Report

Annulled Trains or Delays in Excess of 59 Minutes			
<u>Date</u>	<u>Train</u>	<u>Min. Late</u>	<u>Reason</u>
2/26/24	216	65	Metra PTC issue delay.
2/27/24	17	79	Metra signal problems.
2/27/24	18	103	Train/automobile incident.
2/27/24	111	60	Train car equipment failure.
2/27/24	119	Annulled	Delayed by earlier trains track issues.
2/27/24	217	Annulled	Delayed by earlier trains track issues.
2/27/24	222	Annulled	Delayed by earlier trains track issues.
3/15/24	20	67	Late turn of equipment/speed restrictions.
3/15/24	102	Annulled	PTC issue delay.
3/15/24	203	Annulled	PTC issue delay.
3/15/24	205	61	Late turn of equipment/speed restrictions.
3/15/24	401	Annulled	Late turn of equipment/speed restrictions.
3/27/24	22	60	Delayed by passenger train late to MED.
4/4/24	117	81	PTC issue delay.
4/25/24	7	95	Catenary wire down in Gary.
4/25/24	11	Annulled	Catenary wire down in Gary.
4/25/24	14	110	Catenary wire down in Gary.
4/25/24	216	Annulled	Catenary wire down in Gary.
4/26/24	116	79	PTC issue delay.
5/15/24	113	74	Railcar equipment issues.
5/15/24	224	74	Railcar equipment issues.
5/22/24	7	131	PTC issue delay.
5/22/24	20	92	PTC issue delay.
5/22/24	28	69	Late turn of equipment.
5/22/24	109	Annulled	PTC outage
5/22/24	120	Annulled	PTC outage
5/22/24	207	115	PTC issue delay.
5/22/24	209	135	PTC issue delay.
5/22/24	220	Annulled	PTC outage
5/22/24	224	Annulled	PTC outage
5/23/24	28	70	Late turn of equipment.
5/23/24	31	65	PTC issue delay.
5/23/24	118	71	Metra police activity delays.
5/23/24	128	60	Passenger medical emergency.
5/23/24	226	Annulled	PTC issue delay.
5/23/24	207	60	Metra police activity delays.
5/31/24	133	68	Metra track switch failure.
6/3/24	133	60	Bussing delays.
6/5/24	30	82	Power outage on Metra.
6/5/24	133	114	Power outage on Metra.
6/8/24	703	Annulled	Passenger train interference.
6/10/24	7	73	Delayed by train/vehicle accident.
6/10/24	14	Annulled	Collision with a vehicle.
6/10/24	20	60	Delayed by train/vehicle accident.
6/10/24	103	127	Delayed by train/vehicle accident.
6/10/24	105	137	Delayed by train/vehicle accident.

November 2024 Ridership Report

Annulled Trains or Delays in Excess of 59 Minutes			
<u>Date</u>	<u>Train</u>	<u>Min. Late</u>	<u>Reason</u>
6/10/24	114	139	Delayed by train/vehicle accident.
6/10/24	118	116	Delayed by train/vehicle accident.
6/10/24	205	129	Delayed by train/vehicle accident.
6/10/24	214	Annulled	Delayed by train/vehicle accident.
6/10/24	216	Annulled	Delayed by train/vehicle accident.
6/11/24	135	60	Delay due to bussing and freight train.
6/13/24	121	126	Train car mechanical issues.
6/14/24	30	67	Metra PTC issue delay.
6/17/24	30	60	Late turn of equipment, speed restrictions.
6/20/24	13	Annulled	NIPSCO Gas Line Issue
6/20/24	17	361	NIPSCO Gas Line Issue
6/20/24	29	Annulled	NIPSCO Gas Line Issue
6/20/24	30	125	NIPSCO Gas Line Issue
6/20/24	31	Annulled	NIPSCO Gas Line Issue
6/20/24	113	Annulled	NIPSCO Gas Line Issue
6/20/24	117	Annulled	NIPSCO Gas Line Issue
6/20/24	119	185	NIPSCO Gas Line Issue
6/20/24	121	Annulled	NIPSCO Gas Line Issue
6/20/24	124	Annulled	NIPSCO Gas Line Issue
6/20/24	126	Annulled	NIPSCO Gas Line Issue
6/20/24	127	Annulled	NIPSCO Gas Line Issue
6/20/24	128	Annulled	NIPSCO Gas Line Issue
6/20/24	131	Annulled	NIPSCO Gas Line Issue
6/20/24	224	Annulled	NIPSCO Gas Line Issue
6/20/24	225	Annulled	NIPSCO Gas Line Issue
6/20/24	226	Annulled	NIPSCO Gas Line Issue
6/20/24	228	Annulled	NIPSCO Gas Line Issue
6/20/24	428	Annulled	NIPSCO Gas Line Issue
6/25/24	20	Annulled	Trees and powerlines are down.
6/25/24	103	87	Substation power outage.
6/25/24	105	84	Substation power outage.
6/25/24	117	Annulled	Train car mechanical issues.
6/25/24	118	64	Substation power outage.
6/25/24	216	90	Substation power outage.
6/26/24	228	64	Metra PTC issue delay.
6/30/24	506	64	Train car equipment failure.
7/1/24	7	Annulled	Wires down at Millennium and Van Buren
7/1/24	14	162	Wires down at Millennium and Van Buren
7/1/24	20	105	Wires down at Millennium and Van Buren
7/1/24	105	94	Wires down at Millennium and Van Buren
7/1/24	111	94	Wires down at Millennium and Van Buren
7/1/24	112	310	Wires down at Millennium and Van Buren
7/1/24	114	204	Wires down at Millennium and Van Buren
7/1/24	118	201	Wires down at Millennium and Van Buren
7/1/24	120	82	Wires down at Millennium and Van Buren
7/1/24	207	Annulled	Wires down at Millennium and Van Buren
7/1/24	209	Annulled	Wires down at Millennium and Van Buren

November 2024 Ridership Report

Annulled Trains or Delays in Excess of 59 Minutes			
<u>Date</u>	<u>Train</u>	<u>Min. Late</u>	<u>Reason</u>
7/1/24	214	253	Wires down at Millennium and Van Buren
7/1/24	216	240	Wires down at Millennium and Van Buren
7/1/24	222	Annulled	Wires down at Millennium and Van Buren
7/5/24	133	64	Train car equipment failure.
7/7/24	600	75	Train car equipment failure.
7/13/24	506	60	METRA signal issue with construction.
7/15/24	28	100	METRA PTC Issue.
7/15/24	30	120	METRA PTC Issue.
7/15/24	31	75	METRA power issue.
7/15/24	127	Annulled	METRA Power Outage at Museum Campus
7/15/24	128	106	METRA PTC Issue.
7/15/24	133	247	Late turn of equipment, weather delay.
7/15/24	228	85	METRA PTC Issue.
7/16/24	22	137	METRA PTC Issue.
7/16/24	25	97	METRA PTC Issue.
7/16/24	29	80	METRA PTC Issue.
7/16/24	30	62	METRA PTC Issue.
7/16/24	123	80	METRA PTC Issue.
7/16/24	126	84	METRA PTC Issue.
7/16/24	127	67	METRA PTC Issue.
7/16/24	222	65	METRA PTC Issue.
7/16/24	225	69	METRA PTC Issue.
7/16/24	228	75	Late turn of equipment.
7/17/24	118	92	Police activity at Metra station.
7/22/24	28	67	Late turn of equipment.
7/23/24	101	74	Train car equipment failure.
7/25/24	29	72	Pedestrian incident on the rail.
7/25/24	131	Annulled	Pedestrian incident on the rail.
7/26/24	7	118	Gas Leak passengers bused to Miller.
7/26/24	103	134	Mechanical problems at Carroll Ave Station.
7/26/24	118	135	Potential gas leak at Miller Station.
7/26/24	131	114	Overhead Wire damage west of Gary
7/26/24	133	201	Overhead Wire damage west of Gary
7/26/24	135	Annulled	Overhead Wire damage west of Gary
7/26/24	214	Annulled	NIPSCO Utility Problem
7/27/24	507	64	Police activity for disruptive passengers.
7/27/24	601	94	Wires down at Millennium and Van Buren
7/29/24	30	62	Late turn of equipment.
7/29/24	118	72	PTC issue delay.
7/30/24	30	67	Late turn of equipment.
7/30/24	115	65	Police activity at Metra station.
7/31/24	29	67	Cable theft at Bircham West.
7/31/24	30	127	Cable theft at Bircham West.
7/31/24	31	104	Cable theft at Bircham West.
7/31/24	135	79	Late turn of equipment.
8/2/24	113	75	PTC Issues on Metra
8/2/24	135	62	Metra restricted speeds fell behind Amtrak.

November 2024 Ridership Report

Annulled Trains or Delays in Excess of 59 Minutes			
Date	Train	Min. Late	Reason
8/5/24	30	62	Late turn of equipment.
8/7/24	114	84	Police Activity causing trains to be delayed.
8/7/24	121	66	Mechanical problem restricted speeds.
8/8/24	135	69	PTC Issue.
8/8/24	212	61	Gas leak in Gary causing the delay.
8/9/24	30	63	Metra Delay
8/9/24	135	72	Medical emergency at Hegewisch.
8/23/24	22	99	PTC issue causing trains to wait on another train.
8/25/24	605	73	PTC issue causing trains to wait on another train.
8/25/24	608	60	PTC issue causing trains to wait on another train.
8/26/24	17	72	Train loss communication at Hegewisch.
8/26/24	25	66	Train loss communication at Birchum.
8/26/24	30	74	Communication loss for train.
8/26/24	121	60	Communication loss for train.
8/26/24	228	79	Communication loss for train.
8/26/24	430	65	Late turn of equipment due to communication loss.
8/26/24	432	64	Police activity at Grandview Station.
8/27/24	130	130	Metra Delay
8/27/24	216	ANNULLED	Train was cancelled due to extreme heat.
8/27/24	432	ANNULLED	Train was cancelled due to extreme heat.
8/28/24	7	64	Gas smell at Gary Metro.
8/28/24	120	108	Gas smell at Gary Metro.
8/28/24	225	ANNULLED	PTC Problem returned to Millennium Station.
8/28/24	232	ANNULLED	Positive Train Control Problems.
8/28/24	400	ANNULLED	Obstruction on the track.
8/29/24	131	86	Metra Delay
8/29/24	232	68	Metra Delay
9/5/24	201	Annulled	Combined trains due to Metra Construction
9/5/24	216	Annulled	Combined trains due to Metra Construction
9/5/24	405	80	Railcar mechanical issues.
9/5/24	22	95	Late turn of equipment.
9/12/24	35	65	Metra PTC Issues Delay.
9/12/24	201	Annulled	Metra Construction Annulled Train.
9/14/24	505	72	Metra PTC Issue Delay.
9/14/24	506	62	Metra PTC Issue Delay.
9/16/24	35	71	Metra PTC Issue Delay.
9/19/24	25	98	Delay due to a Pole Fire in Hegewisch
9/19/24	30	90	Delay due to a Pole Fire in Hegewisch
9/19/24	32	107	Delay due to a Pole Fire in Hegewisch
9/19/24	35	65	Delay due to a Pole Fire in Hegewisch
9/19/24	117	130	Delay due to a Pole Fire in Hegewisch
9/19/24	121	Annulled	Pole Fire in Hegewisch.
9/19/24	123	Annulled	Pole Fire in Hegewisch.
9/19/24	127	Annulled	Pole Fire in Hegewisch.
9/19/24	129	Annulled	Pole Fire in Hegewisch.
9/19/24	225	Annulled	Pole Fire in Hegewisch.
9/19/24	232	Annulled	Pole Fire in Hegewisch.

November 2024 Ridership Report

Annulled Trains or Delays in Excess of 59 Minutes			
Date	Train	Min. Late	Reason
9/21/24	504	99	Catenary wire issue with Metra.
9/21/24	509	60	Delayed by freight train
9/23/24	16	123	Trespassing between Gary Metro and Miller
9/23/24	116	81	Trespassing between Gary Metro and Miller
9/25/24	33	79	Metra PTC Issues and Busing Delay
9/25/24	35	68	PTC Issues delay
9/26/24	33	62	Delays due to bussing and freight train delay.
10/1/24	32	80	Railcar mechanical issues.
10/2/24	400	61	Late turn of equipment.
10/7/24	201	Annulled	Train combined for cutover construction
10/7/24	228	Annulled	Train combined for cutover construction
10/8/24	201	Annulled	Train combined for cutover construction
10/8/24	228	Annulled	Train combined for cutover construction
10/9/24	24	70	Bussing delays around construction.
10/9/24	201	Annulled	Train combined for cutover construction
10/9/24	228	Annulled	Train combined for cutover construction
10/10/24	103	Annulled	Train combined for cutover construction
10/10/24	201	Annulled	Train combined for cutover construction
10/10/24	228	Annulled	Train combined for cutover construction
10/11/24	7	100	Metra PTC issue delay.
10/11/24	32	90	Metra PTC issue delay.
10/11/24	35	91	Bussing delays around construction.
10/11/24	201	Annulled	Train combined for cutover construction
10/11/24	216	78	Metra PTC issue delay.
10/11/24	218	87	Metra PTC issue delay.
10/11/24	228	Annulled	Train combined for cutover construction
10/12/24	504	85	Metra PTC issue delay.
10/12/24	509	65	NIPSCO power outage delays.
10/12/24	510	175	NIPSCO power outage delays.
10/12/24	511	97	NIPSCO power outage delays.
10/12/24	513	129	NIPSCO power outage delays.
10/13/24	510	97	Temporary bussing due to construction.
10/13/24	511	88	Temporary bussing due to construction.
10/13/24	601	192	Severe weather & Busing delay
10/14/24	32	60	Temporary bussing due to construction.
10/14/24	101	147	Temporary bussing due to construction.
10/14/24	201	Annulled	Train combined for cutover construction
10/14/24	228	Annulled	Train combined for cutover construction
10/15/24	32	126	Construction/Maintenance Activity
10/15/24	35	100	Construction/Maintenance Activity & PTC
10/15/24	133	90	Construction/Maintenance Activity
10/15/24	201	Annulled	Train combined for cutover construction
10/15/24	216	Annulled	Train combined for cutover construction
10/15/24	228	Annulled	Train combined for cutover construction
10/16/24	25	115	Metra PTC issue delay.
10/16/24	32	91	Late turn of equipment/prior const&maint
10/16/24	35	80	Late turn of equipment/prior const&maint

November 2024 Ridership Report

Annulled Trains or Delays in Excess of 59 Minutes			
Date	Train	Min. Late	Reason
10/16/24	133	61	Construction/Maintenance Activity
10/16/24	201	Annulled	Train combined for cutover construction
10/16/24	216	Annulled	Train combined for cutover construction
10/16/24	218	63	Train combined for cutover construction
10/16/24	228	Annulled	Train combined for cutover construction
10/17/24	201	Annulled	Train combined for cutover construction
10/17/24	228	Annulled	Train combined for cutover construction
10/18/24	228	Annulled	Train combined for cutover construction
10/18/24	201	Annulled	Train combined for cutover construction
10/21/24	113	60	Gas leak at Gary Metro
10/21/24	128	68	Gas leak at Gary Metro
10/21/24	130	80	Construction/Maintenance Activity
10/21/24	201	Annulled	Train combined for cutover construction
10/21/24	226	80	Gas leak at Gary Metro
10/21/24	228	Annulled	Train combined for cutover construction
10/22/24	201	Annulled	Train combined for cutover construction
10/22/24	228	Annulled	Train combined for cutover construction
10/23/24	103	60	Cutover construction delays.
10/23/24	129	Annulled	PTC Issues
10/23/24	201	Annulled	Train combined for cutover construction
10/23/24	228	Annulled	Train combined for cutover construction
10/24/24	103	Annulled	Railcar mechanical issues.
10/24/24	104	Annulled	Railcar mechanical issues.
10/24/24	106	63	Railcar mechanical issues.
10/24/24	201	Annulled	Train combined for cutover construction
10/24/24	228	Annulled	Train combined for cutover construction
10/25/24	102	Annulled	PTC Issues
10/25/24	106	Annulled	PTC Issues
10/25/24	201	Annulled	Train combined for cutover construction
10/25/24	203	Annulled	PTC Issues
10/25/24	228	Annulled	Train combined for cutover construction
10/25/24	401	Annulled	PTC Issues
10/26/24	511	60	Railcar mechanical issues.
10/28/24	201	Annulled	Train combined for cutover construction
10/28/24	207	61	Pedestrian Incident w/o injuries
10/28/24	228	Annulled	Train combined for cutover construction
10/29/24	7	64	Railcar mechanical issues.
10/29/24	24	66	Late turn of equipment.
10/30/24	110	92	Gas smell between Gary Metro/Clark Road
10/31/24	110	257	Slick Rail Conditions
11/1/24	11	93	Railcar mechanical issues.
11/1/24	106	Annulled	This train ran as train 108.
11/1/24	122	65	Railcar mechanical issues.
11/1/24	226	Annulled	This train was combined with train 126.
11/2/24	503	84	Railcar mechanical issues.
11/2/24	606	99	Railcar mechanical issues.
11/4/24	114	Annulled	Railcar mechanical issues.

November 2024 Ridership Report

Annulled Trains or Delays in Excess of 59 Minutes			
<u>Date</u>	<u>Train</u>	<u>Min. Late</u>	<u>Reason</u>
11/4/24	201	Annulled	Late turn of equipment/prior const&maint
11/6/24	400	Annulled	Late turn of equipment/prior const&maint
11/6/24	401	Annulled	Temporary busing due to construction.
11/6/24	405	Annulled	Temporary busing due to construction.
11/9/24	954	Annulled	This train ran as train 854.
11/11/24	430	70	Late turn of equipment/prior const&maint
11/13/24	131	68	Late turn of equipment/prior const&maint
11/14/24	216	Annulled	This train was combined with train 218.
11/17/24	701	Annulled	Railcar mechanical issues.
11/20/24	119	Annulled	PTC Issues
11/21/24	22	60	Restricted speeds/temporary track conditions.
11/21/24	106	Annulled	Railcar mechanical issues.
11/21/24	203	Annulled	This train was combined with train 205.
11/21/24	35	73	Railcar mechanical issues.

November 2024 Ridership Report

Ridership Report

	2022 Passengers	Work Days	2023 Passengers	Work Days	2024 Passengers	Work Days	Change 23/24
Monthly Ridership							
January	66,870	21	105,869	21	103,033	22	-2.7%
February	76,350	20	105,045	20	115,214	21	9.7%
March	114,014	23	126,910	23	130,771	21	3.0%
April	115,914	21	117,539	20	130,179	22	10.8%
May	123,155	21	129,890	22	147,524	22	13.6%
June	138,763	22	139,216	22	155,377	20	11.6%
Cumulative Comparison							
January	66,870	21	105,869	21	103,033	22	-2.7%
February	143,220	41	210,914	41	218,247	43	3.5%
March	257,234	64	337,824	64	349,018	64	3.3%
April	373,148	85	455,363	84	479,197	86	5.2%
May	496,303	106	585,253	106	626,721	108	7.1%
June	635,066	128	724,469	128	782,098	128	8.0%
Average Weekday Ridership							
January	2,539		4,243		4,123		-2.8%
February	3,166		4,432		4,729		6.7%
March	4,134		4,733		4,950		4.6%
April	4,501		4,723		5,049		6.9%
May	4,624		4,957		5,532		11.6%
June	5,084		5,289		5,980		13.1%
Average Weekday Peak Period Ridership							
January	1,700		3,101		2,923		-5.7%
February	2,121		3,115		3,335		7.1%
March	2,742		3,201		3,254		1.7%
April	2,943		3,175		3,488		9.9%
May	3,056		3,384		3,455		2.1%
June	3,208		3,364		3,433		2.1%
Average Weekday Off-Peak Ridership							
January	839		1,142		1,158		1.4%
February	1,045		1,317		1,393		5.8%
March	1,392		1,532		1,696		10.7%
April	1,561		1,549		1,561		0.8%
May	1,569		1,573		2,077		32.0%
June	1,876		1,925		2,547		32.3%

November 2024 Ridership Report

Ridership Report							
	2022 Passengers	Days	2023 Passengers	Days	2024 Passengers	Days	Change 23/24
Average Weekend/Holiday Ridership (per day)							
January	1,355		1,864		1,474		-20.9%
February	1,629		2,052		1,989		-3.1%
March	2,366		2,256		2,682		18.9%
April	2,376		2,306		1,910		-17.2%
May	2,605		2,314		2,868		23.9%
June	3,364		2,858		3,578		25.2%
Monthly South Bend Ridership							
January	8,972		9,775		8,213		-16.0%
February	8,940		8,829		8,510		-3.6%
March	13,530		12,919		13,427		3.9%
April	14,608		13,773		12,596		-8.5%
May	15,290		11,791		16,802		42.5%
June	15,014		12,175		17,947		47.4%

November 2024 Ridership Report

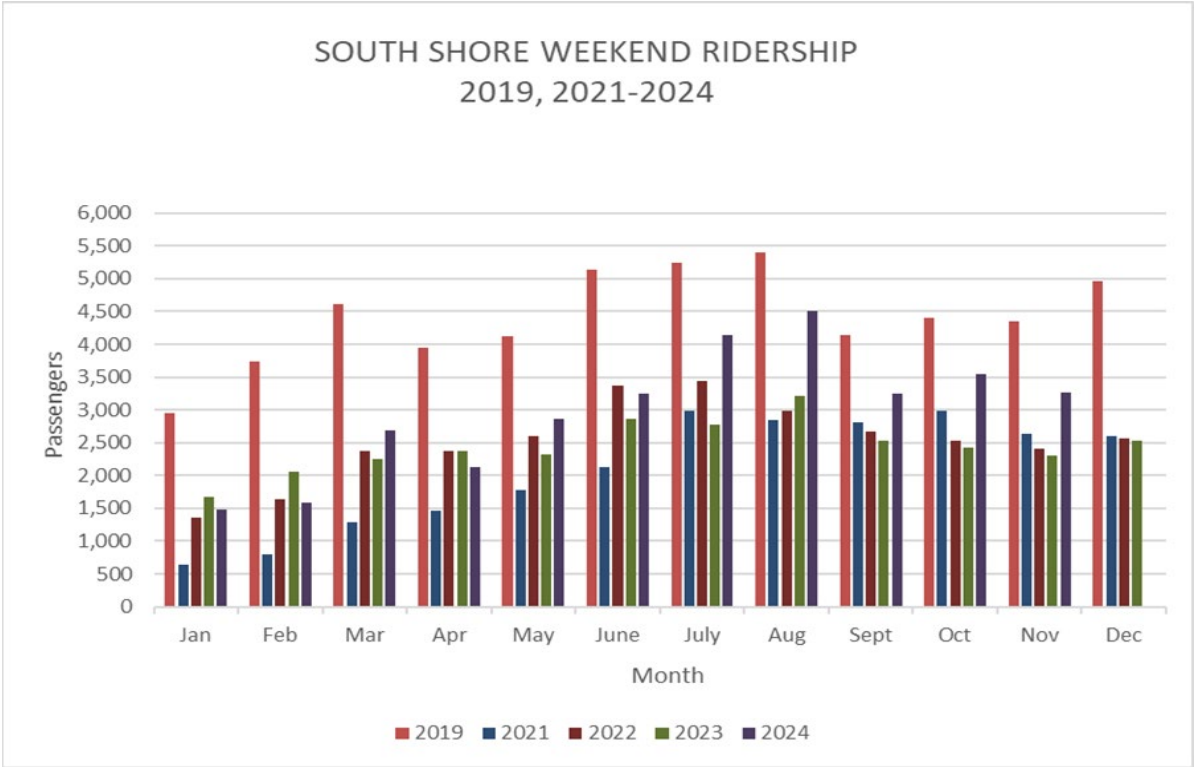
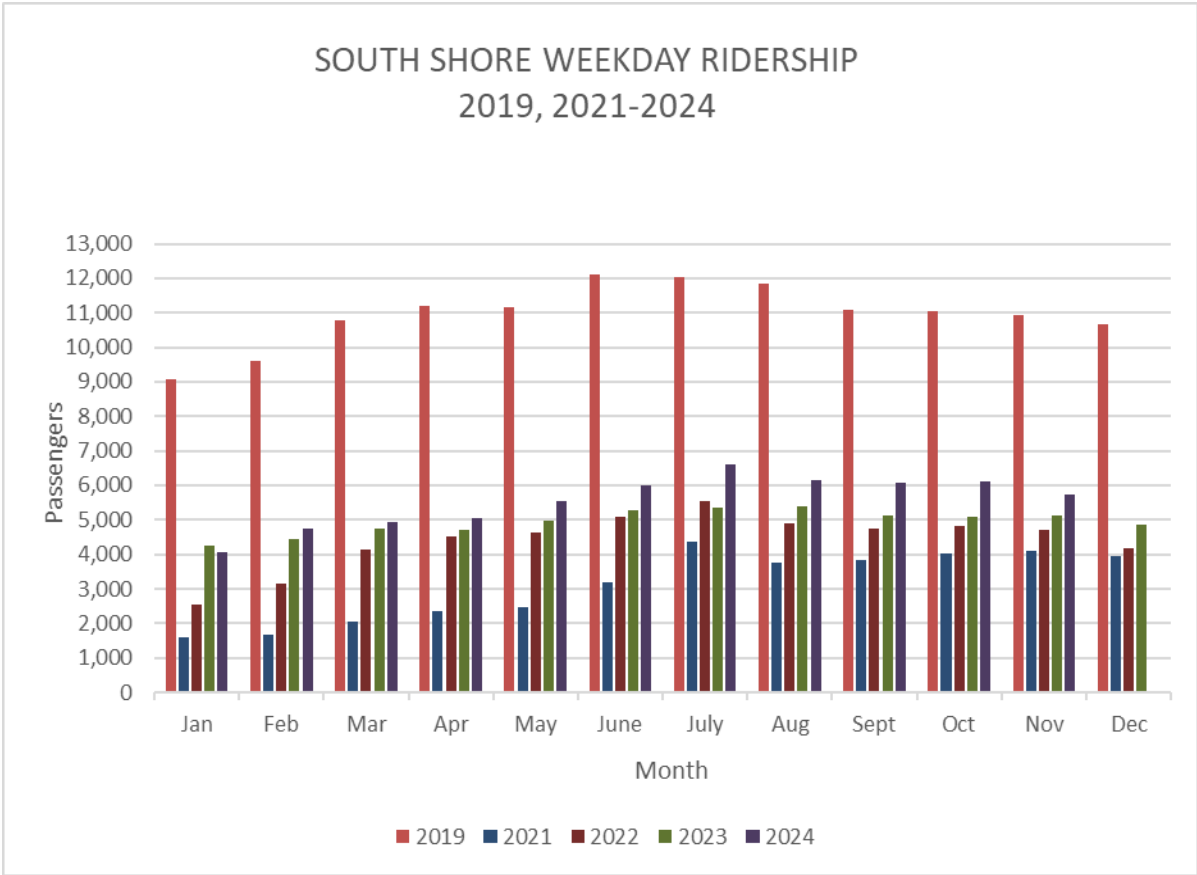
Ridership Report

	2022 Passengers	Work Days	2023 Passengers	Work Days	2024 Passengers	Work Days	Change 23/24
MONTHLY RIDERSHIP							
July	149,051	20	137,216	20	182,458	22	33.0%
August	136,622	23	149,901	23	177,065	22	18.1%
September	123,766	21	127,676	20	157,459	20	23.3%
October	126,386	21	133,937	22	168,948	23	26.1%
November	120,650	22	128,498	22	150,431	20	17.1%
December	115,143	21	125,142	20			
CUMULATIVE COMPARISON							
July	784,117	148	861,685	148	964,556	150	11.9%
August	920,739	171	1,011,586	171	1,141,621	172	12.9%
September	1,044,505	192	1,139,262	191	1,299,080	192	14.0%
October	1,170,891	213	1,273,199	213	1,468,028	215	15.3%
November	1,291,541	235	1,401,697	235	1,618,459	235	15.5%
December	1,406,684	256	1,526,839	255			
Average Weekday Ridership							
July	5,556		5,336		6,603		23.7%
August	4,904		5,399		6,163		14.2%
September	4,746		5,119		6,087		18.9%
October	4,817		5,093		6,115		20.1%
November	4,713		4,663		5,719		22.6%
December	4,383		4,861				
Thru December	4,418	256	4,946	255			
Average Weekday Peak Period Ridership							
July	3,243		3,293		3,645		10.7%
August	3,095		3,429		3,301		-3.7%
September	3,156		3,443		3,751		8.9%
October	3,229		3,472		3,752		8.1%
November	3,064		3,167		3,368		6.3%
December	2,654		2,945				
Thru December	2,844	256	3,274	255			
Average Weekday Off-Peak Ridership							
July	2,314		2,043		2,953		44.5%
August	1,809		1,970		2,862		45.3%
September	1,590		1,676		2,336		39.4%
October	1,588		1,621		2,364		45.8%
November	1,649		1,733		2,356		35.9%
December	1,729		1,916				
Thru December	1,574	256	1,672	255			

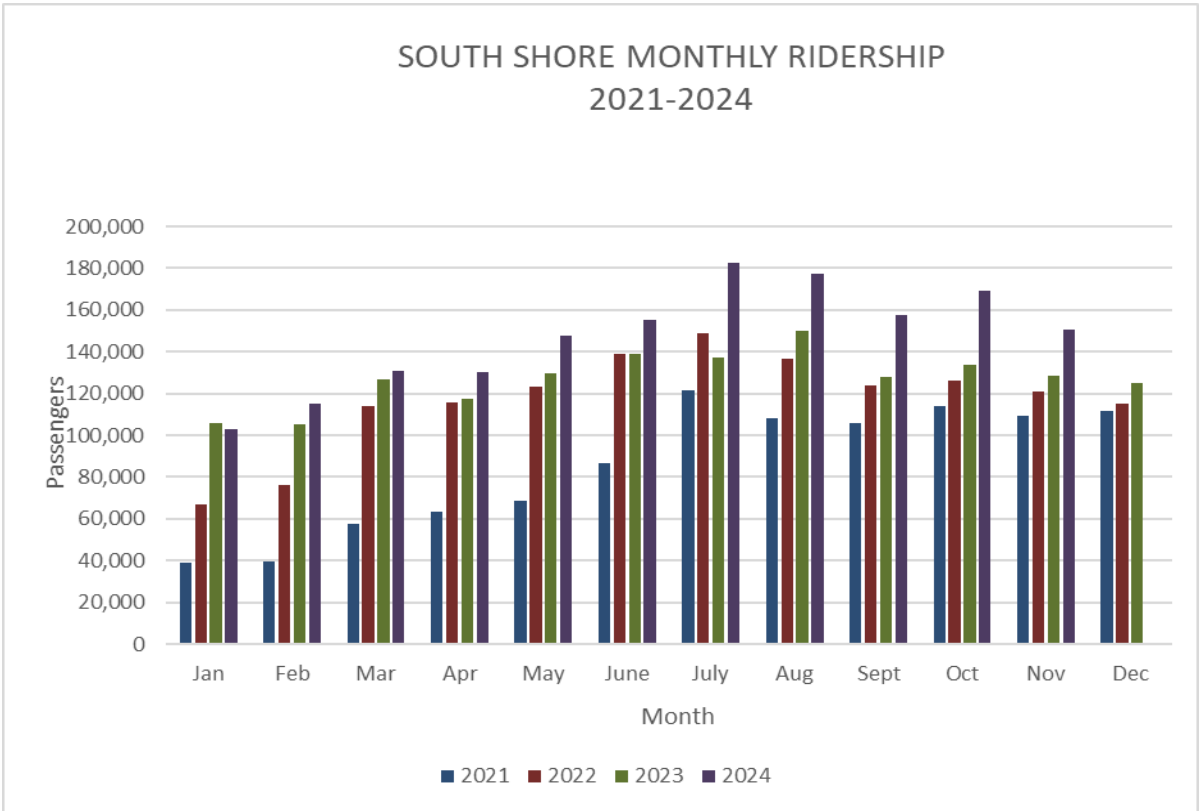
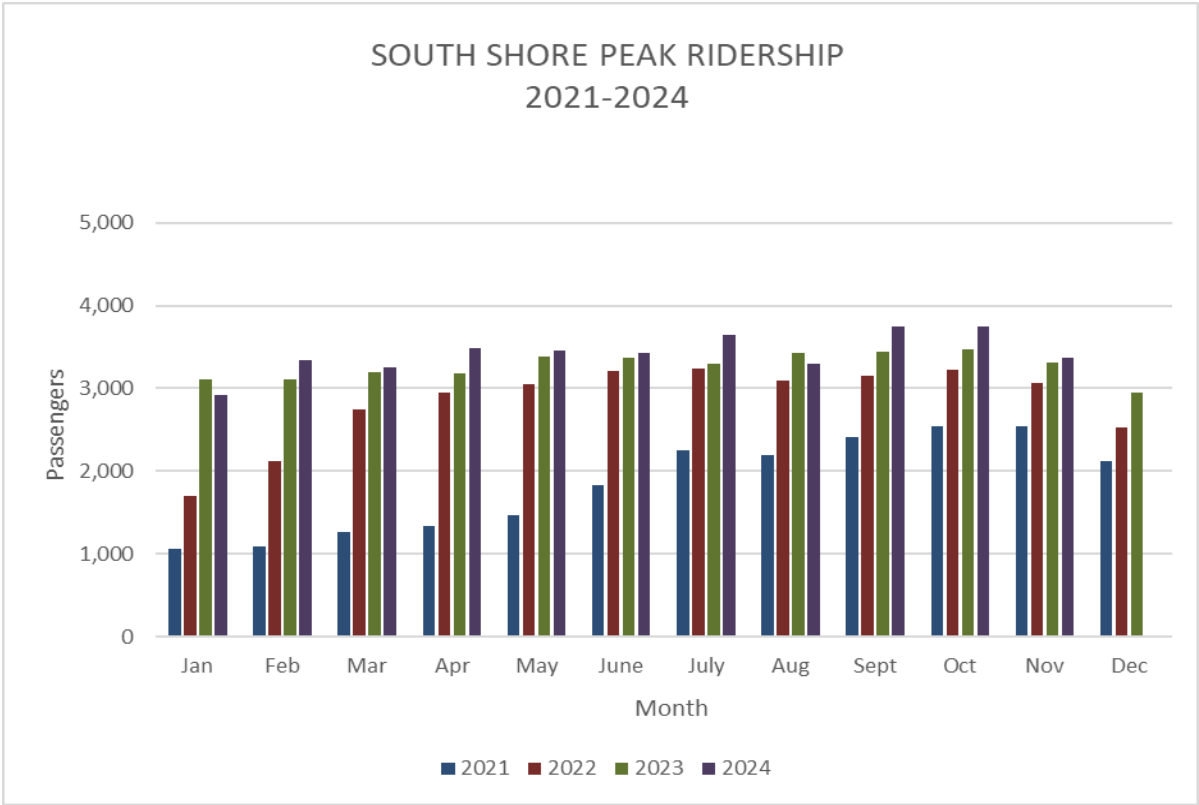
November 2024 Ridership Report

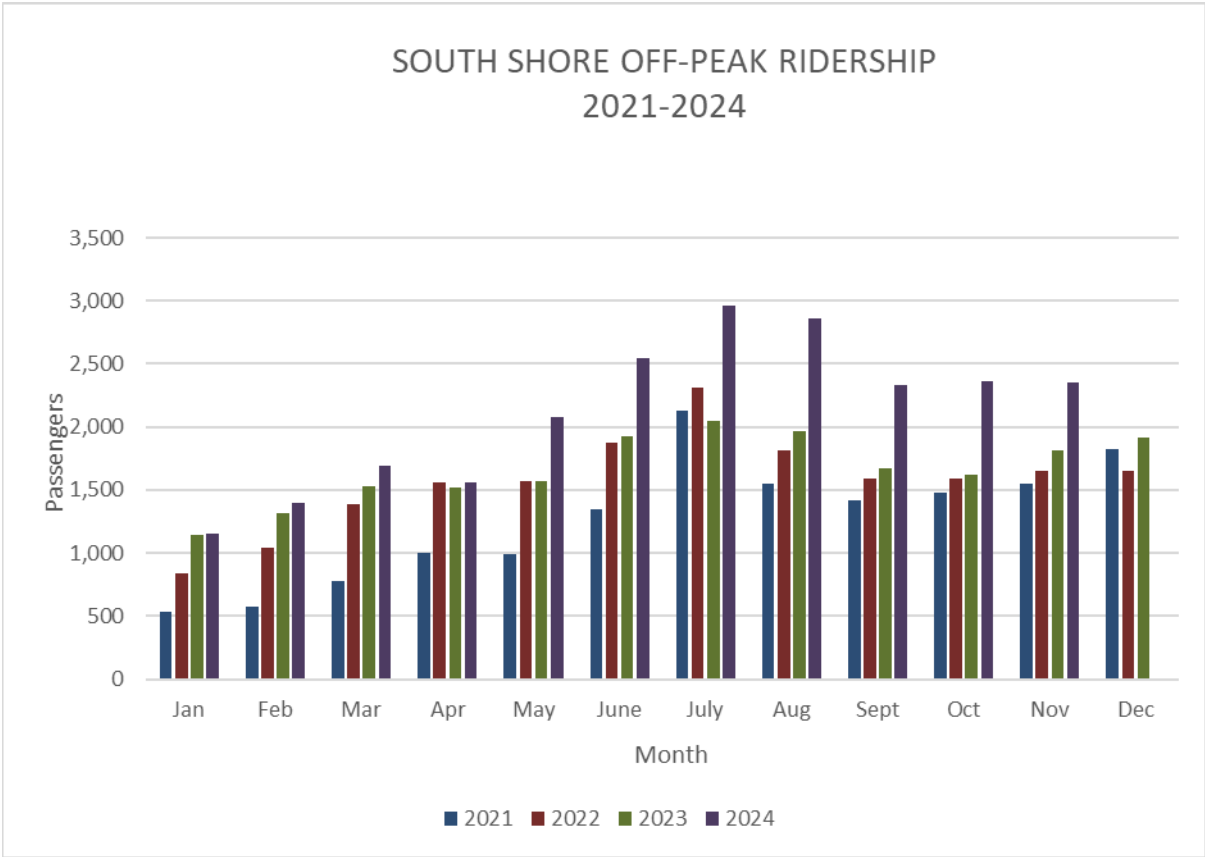
Ridership Report

	2022 Passengers	Days	2023 Passengers	Days	2024 Passengers	Days	Change 23/24
AVERAGE WEEKEND/HOLIDAY RIDERSHIP (per day)							
July	3,348		2,772		4,133		49.1%
August	2,979		3,214		4,501		40.0%
September	2,678		2,530		3,572		41.2%
October	2,523		2,433		3,537		45.4%
November	2,409		2,297		3,596		56.6%
December	2,309		2,538				
Thru Decemb	2,529	109	2,438	110			
MONTHLY SOUTH BEND RIDERSHIP							
July	18,102		13,964		22,167		58.7%
August	12,335		12,291		19,623		59.7%
September	13,613		11,767		18,564		57.8%
October	16,039		12,390		19,508		57.4%
November	14,639		12,190		20,943		71.8%
December	13,374		13,338				



November 2024 Ridership Report





Percent on Time: November, 2024

Peak		
Train	Days Late	% on Time
102	8	60.0%
104	12	40.0%
106	6	66.7%
8	6	70.0%
108	16	20.0%
110	10	50.0%
112	6	70.0%
212	0	0.0%
14	0	0.0%
114	7	63.2%
214	0	0.0%
16	14	75.0%
116	14	30.0%
216	10	47.4%
118	0	0.0%
218	11	45.00%
400	2	89.47%
115	0	0.00%
17	5	75.00%
117	10	50.00%
119	10	47.37%
121	18	10.00%
123	15	25.00%
25	17	15.00%
225	17	15.00%
127	10	50.00%
29	0	0.00%
129	8	60.00%
Total	221	46.7%
Westbound	111	53.0%
Eastbound	110	38.5%

Off-Peak		
Train	Days Late	% on Time
120	11	45.0%
22	18	10.0%
122	10	50.0%
222	4	80.0%
24	8	60.0%
224	6	70.0%
126	8	60.0%
226	4	78.9%
128	4	80.0%
228	5	75.0%
30	11	45.0%
130	20	0.0%
430	6	70.0%
232	2	90.0%
32	19	5.0%
432	5	75.0%
401	1	94.7%
403	0	100.0%
201	5	73.7%
203	6	68.4%
205	7	65.0%
405	0	100.0%
103	8	60.0%
105	16	20.0%
7	13	35.0%
207	6	70.0%
109	7	65.0%
209	8	60.0%
11	19	5.0%
111	15	25.0%
113	11	45.0%
115	13	35.0%
131	6	70.0%
33	18	10.0%
133	17	15.0%
35	18	10.0%
101	17	15.0%
Total	395	35.8%
Westbound	151	5.0%
Eastbound	244	48.7%

Weekend/Holiday		
Train	Days Late	% on Time
952	1	0.0%
600	2	80.0%
502	7	30.0%
504	7	30.0%
606	7	30.0%
506	6	40.0%
608	4	60.0%
508	4	60.0%
610	5	50.0%
954	0	100.0%
510	4	60.0%
956	0	100.0%
503	7	30.0%
603	5	50.0%
605	6	40.0%
505	7	30.0%
507	6	40.0%
509	7	30.0%
511	10	0.0%
513	8	20.0%
601	3	70.0%
701	0	100.0%
703	1	90.0%
Total	106	51.4%
Westbound	46	57.8%
Eastbound	60	45.0%

Trains on time less than
95% peak and 85% off peak.

November 2024 Ridership Report

REASONS (weekday)		
AMT	1	0.2%
CAR	51	8.9%
CAT	0	0.0%
DBS	1	0.2%
DDS	0	0.0%
DMW	10	1.7%
DSR	25	4.3%
DSS	18	3.1%
FRR	1	0.2%
FTI	3	0.5%
HLD	5	0.9%
LMU	20	3.5%
MET	191	33.2%
OET	0	0.0%
OPR	8	1.4%
OTH	32	5.6%
PAS	120	20.9%
POL	5	0.9%
PTC	0	0.0%
PTI	36	6.3%
SUB	0	0.0%
SVS	0	0.0%
TOD	0	0.0%
TRK	13	2.3%
TRS	4	0.7%
UTL	0	0.0%
VAN	0	0.0%
WTR	31	5.4%
TOTAL	575	100.0%

REASONS (weekend)		
AMT	3	2.8%
CAR	13	12.1%
CAT	0	0.0%
DBS	0	0.0%
DDS	0	0.0%
DMW	0	0.0%
DSR	2	1.9%
DSS	1	0.9%
FRR	1	0.9%
FTI	0	0.0%
HLD	5	4.7%
LMU	3	2.8%
MET	29	27.1%
OET	0	0.0%
OPR	2	1.9%
OTH	4	3.7%
PAS	35	32.7%
POL	1	0.9%
PTC	0	0.0%
PTI	7	6.5%
SUB	0	0.0%
SVS	0	0.0%
TOD	0	0.0%
TRK	0	0.0%
TRS	0	0.0%
UTL	0	0.0%
VAN	0	0.0%
WTR	1	0.9%
TOTAL	107	100%

AMT-Amtrak delay
 CAR-Car or equipment failure
 DBS-Delays due to busing.
 DDS-Debris strike
 DMW-Maintenance of Way work
 DSR-Speed Restriction
 DSS-Reduced speed due to restrictive signal
 FRR-Freight train interference from crossing
 FTI-Freight train interference on NICTD track
 HLD-Station delay related to passenger boarding.
 LMU-Late make up (includes turn of equipment)
 MET-Metra delays

OET-Operational efficiency testing
 OPR-Operational delay
 OTH-Other delays
 PAS-Passenger boarding
 PTC-Positive train control delays
 PTI-Passenger train interference
 SUB-Substation
 SVS-Servicing (adding/removing equipment)
 TOD-Train order delay
 TRK-Track/wayside malfunction
 UTL-Utility power outage
 WTR-Weather

NICTD follows the industry standard in defining a train as on time if it arrives at its terminal within 5 minutes and 59 seconds.

November 2024 Ridership Report

Cumulative Percent on Time Thru November, 2024

Peak		
Train	Days Late	% on Time
400	7	90.1%
102	81	65.1%
104	60	74.2%
6	11	88.3%
106	62	73.2%
8	42	70.0%
108	134	42.7%
110	94	59.7%
112	99	57.7%
212	41	39.7%
14	56	16.4%
114	118	49.4%
16	42	41.7%
116	66	8.3%
214	71	55.6%
216	75	44.4%
218	46	36.1%
118	68	0.0%
11	31	66.7%
111	64	31.2%
113	28	70.2%
115	86	46.9%
17	154	33.9%
117	164	29.3%
217	9	90.2%
119	155	33.2%
121	128	7.2%
123	113	18.7%
25	130	7.1%
225	130	5.1%
127	106	22.6%
29	61	9.0%
129	36	41.0%
Total	2,525	44.7%
Westbound	1,166	54.8%
Eastbound	1,359	31.7%

Off-Peak		
Train	Days Late	% on Time
14	40	57.4%
216	52	66.0%
116	25	73.4%
218	25	73.1%
18	81	13.8%
118	36	61.7%
220	75	53.1%
20	130	19.3%
222	118	53.5%
22	196	23.7%
422	13	86.0%
424	2	97.9%
120	113	30.7%
124	49	26.9%
224	89	45.1%
126	105	35.2%
226	67	58.4%
28	63	7.4%
128	94	42.0%
428	16	76.1%
228	54	58.5%
30	123	24.5%
430	15	90.8%
432	22	91.1%
401	12	95.3%
203	114	54.9%
403	19	92.6%
205	72	72.0%
207	102	60.2%
7	188	26.6%
107	24	74.5%
9	73	22.3%
109	139	45.7%
209	132	48.2%
19	18	80.9%
121	71	60.3%
123	68	62.0%
201	77	39.8%
405	3	98.1%
103	82	48.4%
105	115	29.4%
111	121	25.8%
13	66	1.5%
113	111	31.5%
31	66	1.5%
131	100	37.9%
133	133	18.4%
135	64	4.5%
101	136	47.1%
Total	3,389	53%
Westbound	1,102	63%
Eastbound	2,287	45%

Weekend/Holiday		
Train	Days Late	% on Time
952	1	96.7%
600	32	66.0%
502	62	34.0%
504	72	23.4%
606	63	33.0%
506	71	23.7%
608	38	59.6%
508	55	41.5%
610	49	47.9%
954	0	100.0%
510	47	50.0%
956	0	100.0%
710	Deadhead move	
503	75	20.2%
603	66	29.8%
605	64	31.2%
505	73	22.3%
507	79	15.1%
509	72	23.4%
511	63	33.0%
513	20	31.0%
613	40	40.3%
601	34	63.8%
701	1	98.9%
703	9	90.3%
Total	1,085	43.9%
Westbound	489	45.8%
Eastbound	596	42.2%

Trains on time less than
95% peak and 85% off peak.

November 2024 Ridership Report

REASONS (weekday)		
AMT	1	0.2%
CAR	51	8.9%
CAT	0	0.0%
DBS	1	0.2%
DDS	0	0.0%
DMW	10	1.7%
DSR	25	4.3%
DSS	18	3.1%
FRR	1	0.2%
FTI	3	0.5%
HLD	5	0.9%
LMU	20	3.5%
MET	191	33.2%
OET	0	0.0%
OPR	8	1.4%
OTH	32	5.6%
PAS	120	20.9%
POL	5	0.9%
PTC	0	0.0%
PTI	36	6.3%
SUB	0	0.0%
SVS	0	0.0%
TOD	0	0.0%
TRK	13	2.3%
TRS	4	0.7%
UTL	0	0.0%
VAN	0	0.0%
WTR	31	5.4%
TOTAL	575	100.0%

REASONS (weekend)		
AMT	3	2.8%
CAR	13	12.1%
CAT	0	0.0%
DBS	0	0.0%
DDS	0	0.0%
DMW	0	0.0%
DSR	2	1.9%
DSS	1	0.9%
FRR	1	0.9%
FTI	0	0.0%
HLD	5	4.7%
LMU	3	2.8%
MET	29	27.1%
OET	0	0.0%
OPR	2	1.9%
OTH	4	3.7%
PAS	35	32.7%
POL	1	0.9%
PTC	0	0.0%
PTI	7	6.5%
SUB	0	0.0%
SVS	0	0.0%
TOD	0	0.0%
TRK	0	0.0%
TRS	0	0.0%
UTL	0	0.0%
VAN	0	0.0%
WTR	1	0.9%
TOTAL	107	100%

AMT-Amtrak delay
 CAR-Car or equipment failure
 DBS-Delays due to busing.
 DDS-Debris strike
 DMW-Maintenance of Way work
 DSR-Speed Restriction
 DSS-Reduced speed due to restrictive signal
 FRR-Freight train interference from crossing
 FTI-Freight train interference on NICTD track
 HLD-Station delay related to passenger boarding.
 LMU-Late make up (includes turn of equipment)
 MET-Metra delays

OET-Operational efficiency testing
 OPR-Operational delay
 OTH-Other delays
 PAS-Passenger boarding
 PTC-Positive train control delays
 PTI-Passenger train interference
 SUB-Substation
 SVS-Servicing (adding/removing equipment)
 TOD-Train order delay
 TRK-Track/wayside malfunction
 UTL-Utility power outage
 WTR-Weather

NICTD follows the industry standard in defining a train as on time if it arrives at its terminal within 5 minutes and 59 seconds.

November 2024 Ridership Report

RUSH HOUR* TRAIN DELAYS - November 2024 (minutes late)

		Fri	Mon	Tue	Wed	Thu	Fri	Mon	Tue	Wed	Thu	Fri	Mon	Tue	Wed	Thu	Fri	Mon	Tue	Wed	Days	Days	%
Train	Arrive	1	4	5	6	7	8	11	12	13	14	15	18	19	20	21	22	25	26	27	Late	Ran	On Time
400	2:30a				A	31														13	2	19	89.5%
102	5:40a		43	10			10	14	8	6							8	6			8	20	60.0%
104	6:12:00a	9	19	23	13	10	16	10	6	8	6		7		6						12	20	40.0%
106	6:38:00a	A	16	10										12		A	7		11	6	6	18	66.7%
8	6:58a		15	9								13		13	7				11		6	20	70.0%
108	7:35	19	17	19	17	11		8	8		10	8	10	13	16	14	8		16	8	16	20	20.0%
110	7:51	13	32	25	15	8					12			12	10	10			15		10	20	50.0%
112	8:08		17		8						9		8						12	10	6	20	70.0%
114	8:21a		A	13	9	6	5			17									12	10	7	19	63.2%
16	8:18a		22	6	8		7			6											5	20	75.0%
116	8:23a	22	19	19	11	13	15	12		18	27	14	11		10	14	7				14	20	30.0%
216	8:38a		10	19	15	14			10	18	A	8			6	9	10				10	19	47.4%
218	8:58a	35	13	35	10		12			7	9		10	8				9			10	20	50.0%
Train	Depart																						
17	4:05p	17	14							30								16		10	5	20	75.0%
117	4:28p	9		26		6		7		15	17		9	8		13	10				10	20	50.0%
119	4:42p		9		12	16	15	12	7	54	16	10			A		11				10	19	47.4%
121	4:57p	8	6	8		7	7		12	14	16	19	9	10	18	15	20	18	17	10	17	20	15.0%
123	5:05p	10		10	8	7		11	7	24	14	11	7		12		8	7	6	11	15	20	25.0%
25	5:25p	14	16	38	11	9	9	44	23	25	20		12	14			14	19	57	8	16	20	20.0%
225	5:47p	8	8	11	9	15	10		9	14	10	6	7	11	9	11			14	6	16	20	20.0%
127	6:01p	6	9				10	8					13		8	14	7		17		9	20	55.0%
129	6:25p		13	7		6	11			13						8	25		7		8	20	60.0%
High temp		50	67	69	60	59	59	59	51	50	54	51	57	62	49	34	47	57	42	44			
Low temp		35	62	60	49	41	38	43	34	36	47	48	42	47	34	28	27	41	30	34			

* Includes off-peak Trains 14 and 19 for comparative purposes

Temperatures from South Bend

MONTHLY SUMMARY OF RUSH HOUR ON TIME PERFORMANCE

On time	January			February			March			April			May			June		
	#Late	#Ran	%On time	#Late	#Ran	%On time	#Late	#Ran	%On time	#Late	#Ran	%On time	#Late	#Ran	%On time	#Late	#Ran	%On time
	A = Annulled																	
WB Rush	10	146	93.2%	2	146	98.6%	7	147	95.2%	9	154	94.2%	167	189	11.6%	97	179	45.8%
EB Rush	83	147	43.5%	80	147	45.6%	64	147	56.5%	32	154	79.2%	116	149	22.1%	148	155	4.5%
Total Rush	93	293	68.3%	82	293	72.0%	71	294	75.9%	41	308	86.7%	283	338	16.3%	245	334	26.6%

On time	July			August			September			October			November			December		
	#Late	#Ran	%On time	#Late	#Ran	%On time	#Late	#Ran	%On time	#Late	#Ran	%On time	#Late	#Ran	%On time	#Late	#Ran	%On time
	A = Annulled																	
WB Rush	122	176	30.7%	113	202	44.1%	102	220	53.6%	215	294	26.9%	113	255	55.7%			
EB Rush	146	154	5.2%	133	153	13.1%	109	137	20.4%	157	206	23.8%	110	179	38.5%			
Total Rush	268	330	18.8%	246	355	30.7%	211	357	40.9%	372	500	25.6%	223	434	48.6%			

November 2024 Ridership Report

Cumulative

Arrive	Train #	Days Late	Days Ran	% On Time
2:30a	400	7	70	90.0%
5:32a	102	80	233	65.7%
6:12a	104	60	233	74.2%
6:55	6	14	116	87.9%
6:27a	106	62	231	73.2%
6:53a	8	42	140	70.0%
7:05	108	134	234	42.7%
7:13a	110	93	232	59.9%
7:36a	112	98	234	58.1%
7:51a	212	41	69	40.6%
8:17a	14	55	68	19.1%
7:42a	114	118	233	49.4%
8:52a	214	70	160	56.3%
8:38a	216	113	228	50.4%
9:41a	118	70	77	9.1%
Depart				
3:28p	115	67	68	1.5%
3:57p	11	30	93	67.7%
4:02p	17	162	234	30.8%
4:28p	117	136	232	41.4%
4:57p	119	143	233	38.6%
5:10p	121	189	232	18.5%
5:28p	123	172	233	26.2%
5:32p	25	138	225	38.7%
5:58p	225	160	222	27.9%
7:15p	127	123	222	44.6%
6:25p	29	60	67	10.4%
6:25p	129	36	61	41.0%

Cumulative Rush Hour Thru November

Range	TOTAL			PERCENTAGE		
	am	pm	total	am	pm	total
6-10	344	485	829	11.3%	21.2%	15.6%
11-15	343	387	730	11.3%	16.9%	13.7%
16-20	160	229	389	5.3%	10.0%	7.3%
21-30	72	186	258	2.4%	8.1%	4.8%
31-59	76	92	168	2.5%	4.0%	3.2%
60+	18	25	43	0.6%	1.1%	0.8%
Annulled	16	21	37			
Total Late	1013	1404	2417	33.3%	61.4%	45.4%
On time	2026	882	2908	66.7%	38.6%	54.6%
Total ran	3039	2286	5325			

November 2024 Rush Hour

Range	TOTAL			Percentages		
	am	pm	Total	am	pm	Total
6-10	55	53	108	21.57%	29.6%	24.9%
11-15	32	32	64	12.55%	17.9%	14.7%
16-20	16	15	31	6.27%	8.4%	7.1%
21-30	5	6	11	1.96%	3.4%	2.5%
31-59	5	4	9	1.96%	2.2%	2.1%
60+	0	0	0	0.00%	0.0%	0.0%
Annulled	5	1	6	1.96%	0.6%	
Total Late	113	110	223	44.31%	61.5%	51.4%
On time	142	69	211	55.69%	38.5%	48.6%
Total ran	255	179	434	100.00%	100.0%	100.0%

Grand Total All Trains Thru November, 2024

Range	Peak			Wkend	Total	%
	WB	EB	Off			
6-10	344	485	1111	333	2273	14.4%
11-15	343	387	1036	286	2052	13.0%
16-20	160	229	706	201	1296	8.2%
21-30	72	186	650	192	1100	6.9%
31-59	76	92	604	105	877	5.5%
60+	18	25	147	34	224	1.4%
Annulled	16	21	82	6	125	
Total	1013	1404	4254	1151	7822	49.4%
On Time	2026	882	4187	917	8012	50.6%
Total ran	3039	2286	8441	2068	15834	
%On Time	66.7%	38.6%	49.6%	44.3%	50.6%	

Year-to-date cumulative

	#Late	#Ran	%On time
WB Rush	957	2910	67.11%
EB Rush	1178	2828	58.35%
Total Rush	2135	5738	62.79%