



Monthly Ridership and Performance Report

October 2024



Northern Indiana Commuter Transportation District

October 2024 Monthly Performance Report

Ridership

Overall - Ridership for the month was up 26.1% when compared to 2023. Passenger trips for the month were 168,948 in 2024 and 133,937 in 2023. Cumulative year to date ridership was up 15.3% over 2023.

Weekday Travel – Average weekday peak travel was up 8.1% when compared to 2023 while average off peak travel was up 45.8% over 2023 ridership. The combined weekday average in 2024 was 6,115 rides compared to 5,093 in 2023. That is a 20.1% increase for 2024 compared to 2023. Cumulative year to date weekday ridership is up 25.3% over 2023.

Weekend Travel – Weekend ridership was up 45.4% when compared to 2023. The daily average in 2024 was 3,537 compared to 2,433 in 2023. Cumulative year to date weekend ridership is up 21.9% compared to 2023.

Ridership Over Last 12 Months: November through October							
	2020/21	2021/22	% Change	2022/23	% Change	2023/24	% Change
Total	885,013	1,391,655	57.25%	1,508,992	8.43%	1,720,691	14.03%
Weekday	689,985	1,116,231	61.78%	1,242,195	11.28%	1,393,677	12.19%
Peak	413,800	709,759	71.52%	823,017	15.96%	866,765	5.32%
Off Peak	276,185	406,472	47.17%	419,178	3.13%	526,912	25.70%
Weekend	195,028	275,424	41.22%	266,797	-3.13%	327,014	22.57%
South Bend	121,034	169,209	39.80%	157,404	-6.98%	182,848	16.16%

Revenue

The number of tickets sold in October was up 22.0% when comparing 2024 to 2023. Ticket revenue was up 20.8% for 2024 compared to 2023. Sales from digital sources represent 84.0% of ticket sales and 88.4% of ticket revenue.

Total Ticket Sales: October						
Method of Sale	Tickets			Revenue		
	2023	2024	% Change	2023	2024	% Change
Ticket Agent	43,796	13,471	-69.2%	804,725	281,819	-65.0%
Vending Machine	163,002	212,896	30.6%	1,848,295	2,341,035	26.7%
Conductor	101,393	115,365	13.8%	717,622	820,735	14.4%
Mobile App	352,991	464,944	31.7%	4,486,008	6,046,477	34.8%
Total	661,182	806,676	22.0%	7,856,649	9,490,066	20.8%

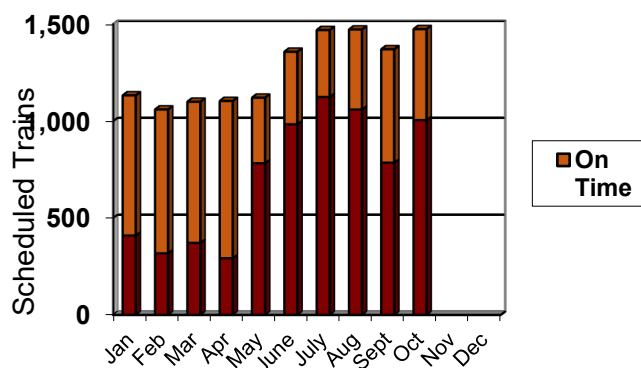
On Time Performance

Rush Hour – Overall, 40.7% of A.M. and P.M. rush hour trains were on time in October 2024 compared to 85.3% in 2023. A train is considered to be on time when it arrives at its terminal within 5 minutes and 59 seconds of its scheduled arrival time (industry standard). 64.2% of all rush hour trains arrived at their terminal station within 10 minutes of the scheduled arrival time. 26.5% of westbound morning rush hour service was on time compared to 90.6% in 2023; while eastbound rush hour trains reported an on-time performance of 23.8% compared to 79.4% in 2023. A total of 216 out of 294 westbound rush hour trains were delayed in October. Of those 216, 119 experienced delays greater than 15 minutes. Eastbound rush hour trains had a total of 157 out of 206 trains delayed in October. Of those 157, 38 experienced delays greater than 15 minutes.¹

October 2024 Rush Hour

	TOTAL			PERCENTAGE		
Range	am	pm	total	am	pm	total
6-10	45	76	121	15.3%	36.9%	24.2%
11-15	52	43	95	17.7%	20.9%	19.0%
16-20	36	16	52	12.2%	7.8%	10.4%
21-30	38	15	53	12.9%	7.3%	10.6%
31-59	38	6	44	12.9%	2.9%	8.8%
60+	7	1	8	2.4%	0.5%	1.6%
Annulled	5	1	6			
Total Late	216	157	373	73.5%	76.2%	74.6%
On time	78	49	127	26.5%	23.8%	25.4%
Total ran	294	206	500	100.0%	100.0%	100.0%

Overall – The South Shore Line scheduled 1,472 trains in October and experienced 1,009 delays in excess of 5 minutes (ranging from 6-257) with median delay of 16 minutes. October of 2024 experienced 42 annulled trains. In October 2023, the South Shore Line scheduled 1,126 trains with 366 delays in excess of 5 minutes (ranging from 6-60 minutes) with a median delay of 15 minutes. October of 2023 experienced 13 annulled trains.



¹ Weekday rush-hour trains operate 13 westbound and 9 eastbound per day.

Cumulative On Time Comparison		
<i>Thru September</i>	2023	2024
Weekday	78.8%	51.3%
Peak	79.9%	54.9%
Off-peak	72.5%	48.9%
Weekend	46.1%	43.3%
Overall	70.6%	50.2%

Delays caused by railroad maintenance. Besides the unexpected delays, passengers may also experience delays caused by railroad construction and maintenance projects. Every effort is made to schedule this work during off-peak and weekends to keep the impact of delays to a minimum. We also post service bulletins in the stations and on our website in advance of anticipated delays.

Currently a joint construction project between NICTD and Metra is ongoing in an effort to make significant improvements to the service these agencies are able to provide in downtown Chicago. This construction will cause delays from time to time, but the two agencies are working closely together to minimize these delays as much as possible.

October 2024 Ridership Report

Annulled Trains or Delays in Excess of 59 Minutes			
Date	Train	Min. Late	Reason
1/8/24	20	104	Animal on tracks.
1/11/24	20	62	Delayed by Amtrak.
1/14/24	503	69	Delayed by bussing.
1/14/24	505	104	Extreme weather took down catenary wire.
1/14/24	506	Annulled	Extreme weather took down catenary wire.
1/14/24	507	Annulled	Extreme weather took down catenary wire.
1/14/24	508	109	Extreme weather took down catenary wire.
1/14/24	510	112	Extreme weather took down catenary wire.
1/14/24	511	62	Extreme weather took down catenary wire.
1/14/24	605	120	Extreme weather took down catenary wire.
1/15/24	604	90	Late turn of equipment.
1/16/24	6	75	Railcar equipment issues.
1/16/24	14	101	Late turn of equipment.
1/16/24	17	Annulled	Extreme weather.
1/16/24	18	67	Late turn of equipment.
1/16/24	22	69	Delayed by passing passenger train.
1/16/24	110	Annulled	Railcar equipment issues.
1/16/24	111	Annulled	Extreme weather.
1/16/24	112	81	Railcar equipment issues.
1/16/24	114	74	Delayed by passing passenger train.
1/16/24	121	75	Railcar equipment issues.
1/16/24	209	Annulled	Extreme weather.
1/16/24	216	Annulled	Extreme weather.
1/16/24	217	Annulled	Extreme weather.
1/16/24	218	Annulled	Extreme weather.
1/16/24	220	Annulled	Extreme weather.
1/16/24	222	Annulled	Extreme weather.
1/16/24	422	Annulled	Extreme weather.
1/17/24	11	95	Delayed by track issues.
1/17/24	18	64	Late turn of equipment.
1/17/24	22	83	Late turn of equipment.
1/17/24	111	60	Delayed by track issues.
1/18/24	20	63	Late turn of equipment.
1/19/24	7	69	Railcar equipment issues.
1/19/24	17	75	Railcar equipment issues.
1/19/24	18	111	Extreme weather.
1/21/24	504	125	Railcar equipment issues.
1/21/24	605	Annulled	Railcar equipment issues.
1/22/24	22	81	Railcar equipment issues.
2/4/24	613	90	Extreme weather and ice on the power lines.
2/10/24	610	66	Railcar equipment issues.

October 2024 Ridership Report

Annulled Trains or Delays in Excess of 59 Minutes			
Date	Train	Min. Late	Reason
2/15/24	20	68	PTC issue delay.
2/16/24	20	77	Late turn of equipment/speed restrictions.
2/17/24	507	63	Delays due to bussing.
2/26/24	9	62	Metra PTC issue delay.
2/26/24	18	104	Metra PTC and passenger boarding.
2/26/24	116	76	Metra PTC issue delay.
2/26/24	216	65	Metra PTC issue delay.
2/27/24	17	79	Metra signal problems.
2/27/24	18	103	Train/automobile incident.
2/27/24	111	60	Train car equipment failure.
2/27/24	119	Annulled	Delayed by earlier trains track issues.
2/27/24	217	Annulled	Delayed by earlier trains track issues.
2/27/24	222	Annulled	Delayed by earlier trains track issues.
3/15/24	20	67	Late turn of equipment/speed restrictions.
3/15/24	102	Annulled	PTC issue delay.
3/15/24	203	Annulled	PTC issue delay.
3/15/24	205	61	Late turn of equipment/speed restrictions.
3/15/24	401	Annulled	Late turn of equipment/speed restrictions.
3/27/24	22	60	Delayed by passenger train late to MED.
4/4/24	117	81	PTC issue delay.
4/25/24	7	95	Catenary wire down in Gary.
4/25/24	11	Annulled	Catenary wire down in Gary.
4/25/24	14	110	Catenary wire down in Gary.
4/25/24	216	Annulled	Catenary wire down in Gary.
4/26/24	116	79	PTC issue delay.
5/15/24	113	74	Railcar equipment issues.
5/15/24	224	74	Railcar equipment issues.
5/22/24	7	131	PTC issue delay.
5/22/24	20	92	PTC issue delay.
5/22/24	28	69	Late turn of equipment.
5/22/24	109	Annulled	PTC outage
5/22/24	120	Annulled	PTC outage
5/22/24	207	115	PTC issue delay.
5/22/24	209	135	PTC issue delay.
5/22/24	220	Annulled	PTC outage
5/22/24	224	Annulled	PTC outage
5/23/24	28	70	Late turn of equipment.
5/23/24	31	65	PTC issue delay.
5/23/24	118	71	Metra police activity delays.
5/23/24	128	60	Passenger medical emergency.
5/23/24	226	Annulled	PTC issue delay.
5/23/24	207	60	Metra police activity delays.
5/31/24	133	68	Metra track switch failure.

October 2024 Ridership Report

Annulled Trains or Delays in Excess of 59 Minutes			
Date	Train	Min. Late	Reason
6/3/24	133	60	Bussing delays.
6/5/24	30	82	Power outage on Metra.
6/5/24	133	114	Power outage on Metra.
6/8/24	703	Annulled	Passenger train interference.
6/10/24	7	73	Delayed by train/vehicle accident.
6/10/24	14	Annulled	Collision with a vehicle.
6/10/24	20	60	Delayed by train/vehicle accident.
6/10/24	103	127	Delayed by train/vehicle accident.
6/10/24	105	137	Delayed by train/vehicle accident.
6/10/24	114	139	Delayed by train/vehicle accident.
6/10/24	118	116	Delayed by train/vehicle accident.
6/10/24	205	129	Delayed by train/vehicle accident.
6/10/24	214	Annulled	Delayed by train/vehicle accident.
6/10/24	216	Annulled	Delayed by train/vehicle accident.
6/11/24	135	60	Delay due to bussing and freight train.
6/13/24	121	126	Train car mechanical issues.
6/14/24	30	67	Metra PTC issue delay.
6/17/24	30	60	Late turn of equipment, speed restrictions.
6/20/24	13	Annulled	NIPSCO Gas Line Issue
6/20/24	17	361	NIPSCO Gas Line Issue
6/20/24	29	Annulled	NIPSCO Gas Line Issue
6/20/24	30	125	NIPSCO Gas Line Issue
6/20/24	31	Annulled	NIPSCO Gas Line Issue
6/20/24	113	Annulled	NIPSCO Gas Line Issue
6/20/24	117	Annulled	NIPSCO Gas Line Issue
6/20/24	119	185	NIPSCO Gas Line Issue
6/20/24	121	Annulled	NIPSCO Gas Line Issue
6/20/24	124	Annulled	NIPSCO Gas Line Issue
6/20/24	126	Annulled	NIPSCO Gas Line Issue
6/20/24	127	Annulled	NIPSCO Gas Line Issue
6/20/24	128	Annulled	NIPSCO Gas Line Issue
6/20/24	131	Annulled	NIPSCO Gas Line Issue
6/20/24	224	Annulled	NIPSCO Gas Line Issue
6/20/24	225	Annulled	NIPSCO Gas Line Issue
6/20/24	226	Annulled	NIPSCO Gas Line Issue
6/20/24	228	Annulled	NIPSCO Gas Line Issue
6/20/24	428	Annulled	NIPSCO Gas Line Issue
6/25/24	20	Annulled	Trees and powerlines are down.
6/25/24	103	87	Substation power outage.
6/25/24	105	84	Substation power outage.
6/25/24	117	Annulled	Train car mechanical issues.
6/25/24	118	64	Substation power outage.
6/25/24	216	90	Substation power outage.
6/26/24	228	64	Metra PTC issue delay.
6/30/24	506	64	Train car equipment failure.

October 2024 Ridership Report

Annulled Trains or Delays in Excess of 59 Minutes			
Date	Train	Min. Late	Reason
7/1/24	7	Annulled	Wires down at Millennium and Van Buren
7/1/24	14	162	Wires down at Millennium and Van Buren
7/1/24	20	105	Wires down at Millennium and Van Buren
7/1/24	105	94	Wires down at Millennium and Van Buren
7/1/24	111	94	Wires down at Millennium and Van Buren
7/1/24	112	310	Wires down at Millennium and Van Buren
7/1/24	114	204	Wires down at Millennium and Van Buren
7/1/24	118	201	Wires down at Millennium and Van Buren
7/1/24	120	82	Wires down at Millennium and Van Buren
7/1/24	207	Annulled	Wires down at Millennium and Van Buren
7/1/24	209	Annulled	Wires down at Millennium and Van Buren
7/1/24	214	253	Wires down at Millennium and Van Buren
7/1/24	216	240	Wires down at Millennium and Van Buren
7/1/24	222	Annulled	Wires down at Millennium and Van Buren
7/5/24	133	64	Train car equipment failure.
7/7/24	600	75	Train car equipment failure.
7/13/24	506	60	METRA signal issue with construction.
7/15/24	28	100	METRA PTC Issue.
7/15/24	30	120	METRA PTC Issue.
7/15/24	31	75	METRA power issue.
7/15/24	127	Annulled	METRA Power Outage at Museum Campus
7/15/24	128	106	METRA PTC Issue.
7/15/24	133	247	Late turn of equipment, weather delay.
7/15/24	228	85	METRA PTC Issue.
7/16/24	22	137	METRA PTC Issue.
7/16/24	25	97	METRA PTC Issue.
7/16/24	29	80	METRA PTC Issue.
7/16/24	30	62	METRA PTC Issue.
7/16/24	123	80	METRA PTC Issue.
7/16/24	126	84	METRA PTC Issue.
7/16/24	127	67	METRA PTC Issue.
7/16/24	222	65	METRA PTC Issue.
7/16/24	225	69	METRA PTC Issue.
7/16/24	228	75	Late turn of equipment.
7/17/24	118	92	Police activity at Metra station.
7/22/24	28	67	Late turn of equipment.
7/23/24	101	74	Train car equipment failure.
7/25/24	29	72	Pedestrian incident on the rail.
7/25/24	131	Annulled	Pedestrian incident on the rail.
7/26/24	7	118	Gas Leak passengers bused to Miller.
7/26/24	103	134	Mechanical problems at Carroll Ave Station.
7/26/24	118	135	Potential gas leak at Miller Station.
7/26/24	131	114	Overhead Wire damage west of Gary
7/26/24	133	201	Overhead Wire damage west of Gary
7/26/24	135	Annulled	Overhead Wire damage west of Gary
7/26/24	214	Annulled	NIPSCO Utility Problem
7/27/24	507	64	Police activity for disruptive passengers.

October 2024 Ridership Report

Annulled Trains or Delays in Excess of 59 Minutes			
Date	Train	Min. Late	Reason
7/27/24	601	94	Wires down at Millennium and Van Buren
7/29/24	30	62	Late turn of equipment.
7/29/24	118	72	PTC issue delay.
7/30/24	30	67	Late turn of equipment.
7/30/24	115	65	Police activity at Metra station.
7/31/24	29	67	Cable theft at Bircham West.
7/31/24	30	127	Cable theft at Bircham West.
7/31/24	31	104	Cable theft at Bircham West.
7/31/24	135	79	Late turn of equipment.
8/2/24	113	75	PTC Issues on Metra
8/2/24	135	62	Metra restricted speeds fell behind Amtrak.
8/5/24	30	62	Late turn of equipment.
8/7/24	114	84	Police Activity causing train to be delayed.
8/7/24	121	66	Mechanical problem restricted speeds.
8/8/24	135	69	PTC Issue.
8/8/24	212	61	Gas leak in Gary causing the delay.
8/9/24	30	63	Metra Delay
8/9/24	135	72	Medical emergency at Hegewisch.
8/23/24	22	99	PTC issue causing train to wait.
8/25/24	605	73	PTC issue causing train to wait.
8/25/24	608	60	PTC issue causing train to wait.
8/26/24	17	72	Train loss communication at Hegewisch.
8/26/24	25	66	Train loss communication at Birchum.
8/26/24	30	74	Communication loss for train.
8/26/24	121	60	Communication loss for train.
8/26/24	228	79	Communication loss for train.
8/26/24	430	65	Late turn of equipment communication loss.
8/26/24	432	64	Police activity at Grandview Station.
8/27/24	130	130	Metra Delay
8/27/24	216	ANNULLED	Train was cancelled due to extreme heat.
8/27/24	432	ANNULLED	Train was cancelled due to extreme heat.
8/28/24	7	64	Gas smell at Gary Metro.
8/28/24	120	108	Gas smell at Gary Metro.
8/28/24	225	ANNULLED	PTC Problem returned to Millennium Station.
8/28/24	232	ANNULLED	Positive Train Control Problems.
8/28/24	400	ANNULLED	Obstruction on the track.
8/29/24	131	86	Metra Delay
8/29/24	232	68	Metra Delay
9/5/24	201	Annulled	Combined trains due to Metra Construction
9/5/24	216	Annulled	Combined trains due to Metra Construction
9/5/24	405	80	Railcar mechanical issues.
9/5/24	22	95	Late turn of equipment.

October 2024 Ridership Report

Annulled Trains or Delays in Excess of 59 Minutes			
Date	Train	Min. Late	Reason
9/12/24	35	65	Metra PTC Issues Delay.
9/12/24	201	Annulled	Metra Construction Annulled Train.
9/14/24	505	72	Metra PTC Issue Delay.
9/14/24	506	62	Metra PTC Issue Delay.
9/16/24	35	71	Metra PTC Issue Delay.
9/19/24	25	98	Delay due to a Pole Fire in Hegewisch
9/19/24	30	90	Delay due to a Pole Fire in Hegewisch
9/19/24	32	107	Delay due to a Pole Fire in Hegewisch
9/19/24	35	65	Delay due to a Pole Fire in Hegewisch
9/19/24	117	130	Delay due to a Pole Fire in Hegewisch
9/19/24	121	Annulled	Pole Fire in Hegewisch.
9/19/24	123	Annulled	Pole Fire in Hegewisch.
9/19/24	127	Annulled	Pole Fire in Hegewisch.
9/19/24	129	Annulled	Pole Fire in Hegewisch.
9/19/24	225	Annulled	Pole Fire in Hegewisch.
9/19/24	232	Annulled	Pole Fire in Hegewisch.
9/21/24	504	99	Catenary wire issue with Metra.
9/21/24	509	60	Delayed by freight train
9/23/24	16	123	Trespassing between Gary Metro and Miller
9/23/24	116	81	Trespassing between Gary Metro and Miller
9/25/24	33	79	Metra PTC Issues and Busing Delay
9/25/24	35	68	PTC Issues delay
9/26/24	33	62	Delays due to bussing and freight train delay.
10/1/24	32	80	Railcar mechanical issues.
10/2/24	400	61	Late turn of equipment.
10/7/24	201	Annulled	Train combined for cutover construction
10/7/24	228	Annulled	Train combined for cutover construction
10/8/24	201	Annulled	Train combined for cutover construction
10/8/24	228	Annulled	Train combined for cutover construction
10/9/24	24	70	Bussing delays around construction.
10/9/24	201	Annulled	Train combined for cutover construction
10/9/24	228	Annulled	Train combined for cutover construction
10/10/24	103	Annulled	Train combined for cutover construction
10/10/24	201	Annulled	Train combined for cutover construction
10/10/24	228	Annulled	Train combined for cutover construction
10/11/24	7	100	Metra PTC issue delay.
10/11/24	32	90	Metra PTC issue delay.
10/11/24	35	91	Bussing delays around construction.
10/11/24	201	Annulled	Train combined for cutover construction
10/11/24	216	78	Metra PTC issue delay.
10/11/24	218	87	Metra PTC issue delay.
10/11/24	228	Annulled	Train combined for cutover construction
10/12/24	504	85	Metra PTC issue delay.
10/12/24	509	65	NIPSCO power outage delays.
10/12/24	510	175	NIPSCO power outage delays.
10/12/24	511	97	NIPSCO power outage delays.
10/12/24	513	129	NIPSCO power outage delays.

October 2024 Ridership Report

Annulled Trains or Delays in Excess of 59 Minutes			
Date	Train	Min. Late	Reason
10/13/24	511	88	Temporary busing due to construction.
10/13/24	601	192	Severe weather & Busing delay
10/14/24	32	60	Temporary busing due to construction.
10/14/24	101	147	Temporary busing due to construction.
10/14/24	201	Annulled	Train combined for cutover construction
10/14/24	228	Annulled	Train combined for cutover construction
10/15/24	32	126	Construction/Maintenance Activity
10/15/24	35	100	Construction/Maintenance Activity & PTC
10/15/24	133	90	Construction/Maintenance Activity
10/15/24	201	Annulled	Train combined for cutover construction
10/15/24	216	Annulled	Train combined for cutover construction
10/15/24	228	Annulled	Train combined for cutover construction
10/16/24	25	115	Metra PTC issue delay.
10/16/24	32	91	Late turn of equipment/prior const&maint
10/16/24	35	80	Late turn of equipment/prior const&maint
10/16/24	133	61	Construction/Maintenance Activity
10/16/24	201	Annulled	Train combined for cutover construction
10/16/24	216	Annulled	Train combined for cutover construction
10/16/24	218	63	Train combined for cutover construction
10/16/24	228	Annulled	Train combined for cutover construction
10/17/24	201	Annulled	Train combined for cutover construction
10/17/24	228	Annulled	Train combined for cutover construction
10/18/24	228	Annulled	Train combined for cutover construction
10/18/24	201	Annulled	Train combined for cutover construction
10/21/24	113	60	Gas leak at Gary Metro
10/21/24	128	68	Gas leak at Gary Metro
10/21/24	130	80	Construction/Maintenance Activity
10/21/24	201	Annulled	Train combined for cutover construction
10/21/24	226	80	Gas leak at Gary Metro
10/21/24	228	Annulled	Train combined for cutover construction
10/22/24	201	Annulled	Train combined for cutover construction
10/22/24	228	Annulled	Train combined for cutover construction
10/23/24	103	60	Cutover construction delays.
10/23/24	129	Annulled	PTC Issues
10/23/24	201	Annulled	Train combined for cutover construction
10/23/24	228	Annulled	Train combined for cutover construction
10/24/24	103	Annulled	Railcar mechanical issues.
10/24/24	104	Annulled	Railcar mechanical issues.
10/24/24	106	63	Railcar mechanical issues.
10/24/24	201	Annulled	Train combined for cutover construction
10/24/24	228	Annulled	Train combined for cutover construction
10/25/24	102	Annulled	PTC Issues
10/25/24	106	Annulled	PTC Issues
10/25/24	201	Annulled	Train combined for cutover construction
10/25/24	203	Annulled	PTC Issues
10/25/24	228	Annulled	Train combined for cutover construction
10/25/24	401	Annulled	PTC Issues

October 2024 Ridership Report

Annulled Trains or Delays in Excess of 59 Minutes			
Date	Train	Min. Late	Reason
10/26/24	511	60	Railcar mechanical issues.
10/28/24	201	Annulled	Train combined for cutover construction
10/28/24	207	61	Pedestrian Incident w/o injuries
10/28/24	228	Annulled	Train combined for cutover construction
10/29/24	7	64	Railcar mechanical issues.
10/29/24	24	66	Late turn of equipment.
10/30/24	110	92	Gas smell between Gary Metro/Clark Road
10/31/24	110	257	Slick Rail Conditions

October 2024 Ridership Report

Ridership Report

	2022	Work	2023	Work	2024	Work	Change
	Passengers	Days	Passengers	Days	Passengers	Days	23/24
Monthly Ridership							
January	66,870	21	105,869	21	103,033	22	-2.7%
February	76,350	20	105,045	20	115,214	21	9.7%
March	114,014	23	126,910	23	130,771	21	3.0%
April	115,914	21	117,539	20	130,179	22	10.8%
May	123,155	21	129,890	22	147,524	22	13.6%
June	138,763	22	139,216	22	155,377	20	11.6%
Cumulative Comparison							
January	66,870	21	105,869	21	103,033	22	-2.7%
February	143,220	41	210,914	41	218,247	43	3.5%
March	257,234	64	337,824	64	349,018	64	3.3%
April	373,148	85	455,363	84	479,197	86	5.2%
May	496,303	106	585,253	106	626,721	108	7.1%
June	635,066	128	724,469	128	782,098	128	8.0%
Average Weekday Ridership							
January	2,539		4,243		4,123		-2.8%
February	3,166		4,432		4,729		6.7%
March	4,134		4,733		4,950		4.6%
April	4,501		4,723		5,049		6.9%
May	4,624		4,957		5,532		11.6%
June	5,084		5,289		5,980		13.1%
Average Weekday Peak Period Ridership							
January	1,700		3,101		2,923		-5.7%
February	2,121		3,115		3,335		7.1%
March	2,742		3,201		3,254		1.7%
April	2,943		3,175		3,488		9.9%
May	3,056		3,384		3,455		2.1%
June	3,208		3,364		3,433		2.1%
Average Weekday Off-Peak Ridership							
January	839		1,142		1,158		1.4%
February	1,045		1,317		1,393		5.8%
March	1,392		1,532		1,696		10.7%
April	1,561		1,549		1,561		0.8%
May	1,569		1,573		2,077		32.0%
June	1,876		1,925		2,547		32.3%

October 2024 Ridership Report

Ridership Report							
	2022 Passengers	Days	2023 Passengers	Days	2024 Passengers	Days	Change 23/24
Average Weekend/Holiday Ridership (per day)							
January	1,355		1,864		1,474		-20.9%
February	1,629		2,052		1,989		-3.1%
March	2,366		2,256		2,682		18.9%
April	2,376		2,306		1,910		-17.2%
May	2,605		2,314		2,868		23.9%
June	3,364		2,858		3,578		25.2%
Monthly South Bend Ridership							
January	8,972		9,775		8,213		-16.0%
February	8,940		8,829		8,510		-3.6%
March	13,530		12,919		13,427		3.9%
April	14,608		13,773		12,596		-8.5%
May	15,290		11,791		16,802		42.5%
June	15,014		12,175		17,947		47.4%

October 2024 Ridership Report

Ridership Report

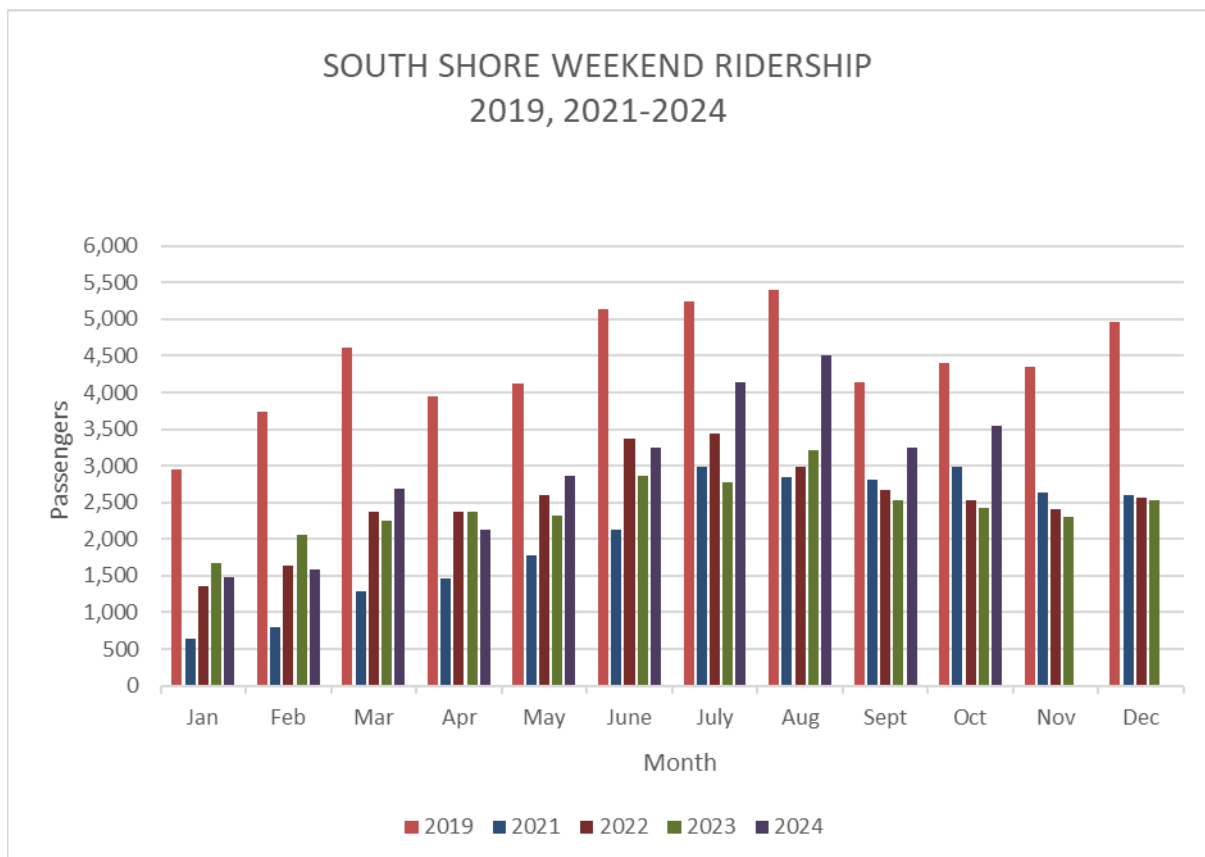
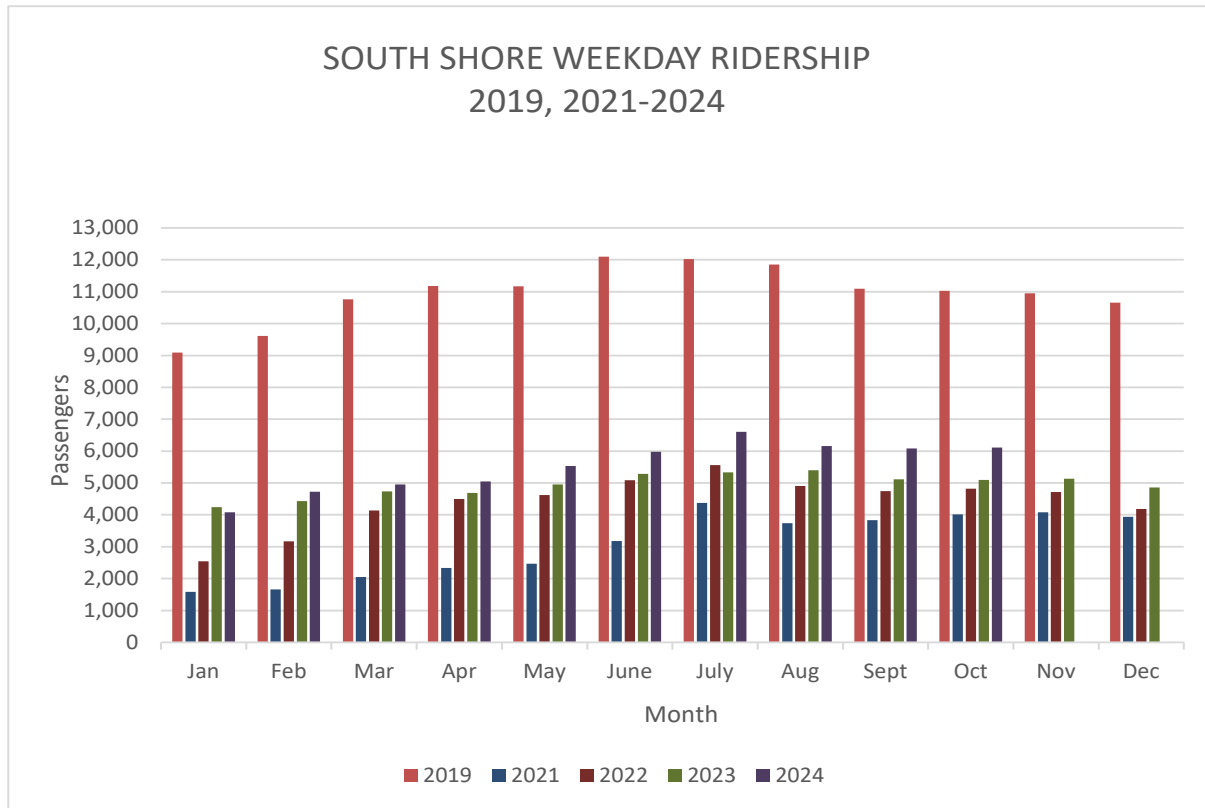
	2022 Passengers	Work Days	2023 Passengers	Work Days	2024 Passengers	Work Days	Change 23/24
MONTHLY RIDERSHIP							
July	149,051	20	137,216	20	182,458	22	33.0%
August	136,622	23	149,901	23	177,065	22	18.1%
September	123,766	21	127,676	20	157,459	20	23.3%
October	126,386	21	133,937	22	168,948	23	26.1%
November	120,650	22	128,498	22			
December	115,143	21	125,142	20			
CUMULATIVE COMPARISON							
July	784,117	148	861,685	148	964,556	150	11.9%
August	920,739	171	1,011,586	171	1,141,621	172	12.9%
September	1,044,505	192	1,139,262	191	1,299,080	192	14.0%
October	1,170,891	213	1,273,199	213			
November	1,291,541	235	1,401,697	235			
December	1,406,684	256	1,526,839	255			
Average Weekday Ridership							
July	5,556		5,336		6,603		23.7%
August	4,904		5,399		6,163		14.2%
September	4,746		5,119		6,087		18.9%
October	4,817		5,093		6,115		20.1%
November	4,713		4,663				
December	4,383		4,861				
Thru December	4,418	256	4,946	255			
Average Weekday Peak Period Ridership							
July	3,243		3,293		3,645		10.7%
August	3,095		3,429		3,301		-3.7%
September	3,156		3,443		3,751		8.9%
October	3,229		3,472		3,752		8.1%
November	3,064		3,167				
December	2,654		2,945				
Thru December	2,844	256	3,274	255			
Average Weekday Off-Peak Ridership							
July	2,314		2,043		2,953		44.5%
August	1,809		1,970		2,862		45.3%
September	1,590		1,676		2,336		39.4%
October	1,588		1,621		2,364		45.8%
November	1,649		1,733				
December	1,729		1,916				
Thru December	1,574	256	1,672	255			

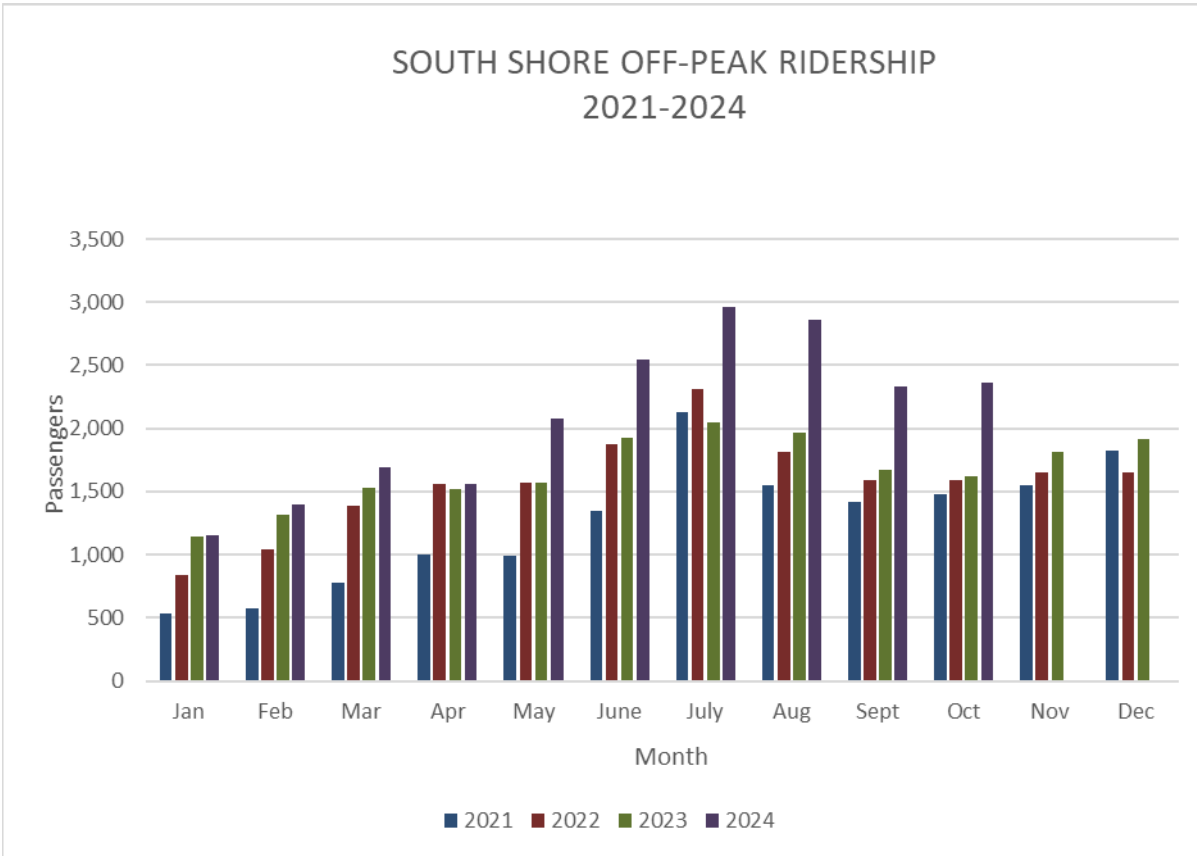
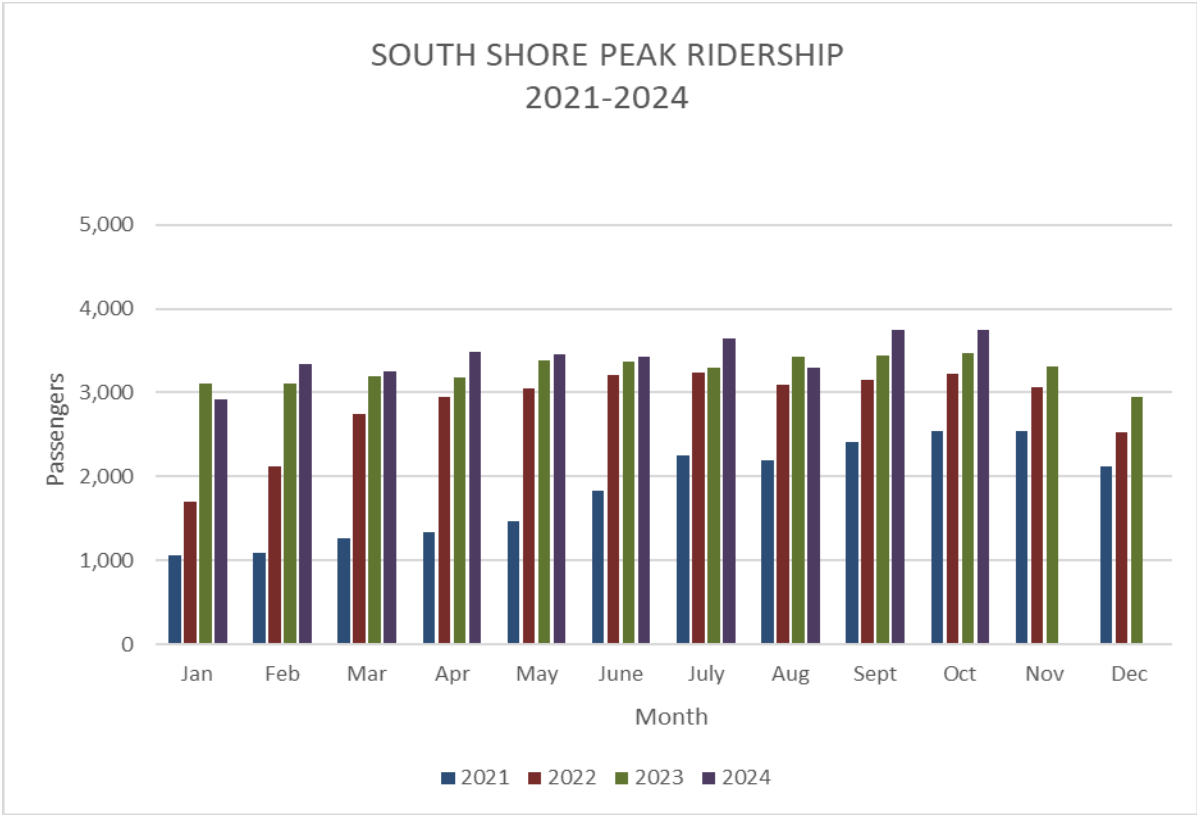
October 2024 Ridership Report

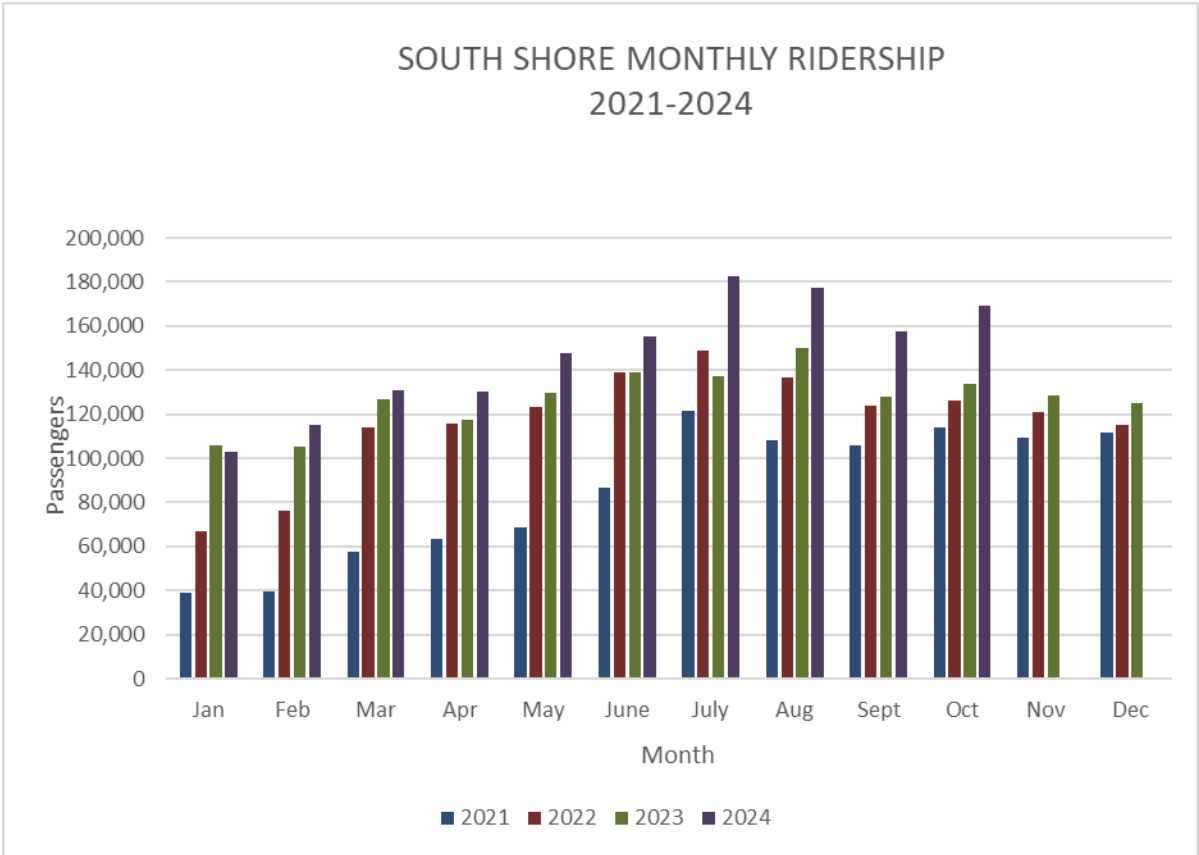
Ridership Report

	2022 Passengers	Days	2023 Passengers	Wkend Days	2024 Passengers	Days	Change 23/24
AVERAGE WEEKEND/HOLIDAY RIDERSHIP (per day)							
July	3,348		2,772		4,133		49.1%
August	2,979		3,214		4,501		40.0%
September	2,678		2,530		3,572		41.2%
October	2,523		2,433		3,537		45.4%
November	2,409		2,297				
December	2,309		2,538				
Thru December	2,529	109	2,438	110			
MONTHLY SOUTH BEND RIDERSHIP							
July	18,102		13,964		22,167		58.7%
August	12,335		12,291		19,623		59.7%
September	13,613		11,767		18,564		57.8%
October	16,039		12,390		19,508		57.4%
November	14,639		12,190				
December	13,374		13,338				

October 2024 Ridership Report







Percent on Time: October, 2024

Peak		
Train	Days Late	% on Time
102	11	50.0%
104	19	13.6%
106	15	31.8%
8	14	39.1%
108	21	8.7%
110	18	21.7%
112	12	47.8%
212	0	0.0%
14	0	0.0%
114	17	26.1%
214	0	0.0%
16	23	8.7%
116	23	0.0%
216	20	4.8%
118	0	0.0%
218	21	8.70%
400	4	82.61%
115	0	0.00%
17	19	17.39%
117	14	39.13%
119	14	39.13%
121	20	13.04%
123	15	34.78%
25	21	8.70%
225	22	4.35%
127	16	30.43%
29	0	0.00%
129	16	27.27%
Total	373	25.4%
Westbound	216	26.5%
Eastbound	157	23.8%

Off-Peak		
Train	Days Late	% on Time
120	18	21.7%
22	17	26.1%
122	15	34.8%
222	8	65.2%
24	18	21.7%
224	3	87.0%
126	14	39.1%
226	12	47.8%
128	14	39.1%
228	4	42.9%
30	20	13.0%
130	23	0.0%
430	4	82.6%
232	13	43.5%
32	22	4.3%
432	5	78.3%
401	2	90.9%
403	4	82.6%
201	3	57.1%
203	21	4.5%
205	11	52.2%
405	0	100.0%
103	17	19.0%
105	20	13.0%
7	21	8.7%
207	10	56.5%
109	15	34.8%
209	9	60.9%
11	23	0.0%
111	17	26.1%
113	12	47.8%
115	19	17.4%
131	15	34.8%
33	21	8.7%
133	21	8.7%
35	22	4.3%
101	21	8.7%
Total	569	35.5%
Westbound	230	38.3%
Eastbound	339	33.4%

Weekend/Holiday		
Train	Days Late	% on Time
952	0	100.0%
600	5	37.5%
502	8	0.0%
504	7	12.5%
606	8	0.0%
506	8	0.0%
608	7	12.5%
508	8	0.0%
610	5	37.5%
954	0	100.0%
510	6	25.0%
956	0	100.0%
503	7	12.5%
603	8	0.0%
605	5	37.5%
505	8	0.0%
507	5	37.5%
509	7	12.5%
511	8	0.0%
513	5	37.5%
601	4	50.0%
701	1	87.5%
703	2	75.0%
Total	122	33.7%
Westbound	62	35.4%
Eastbound	60	31.8%

*Trains on time less than
95% peak and 85% off peak.*

October 2024 Ridership Report

REASONS (weekday)		
AMT	3	0.3%
CAR	16	1.8%
CAT	0	0.0%
DBS	0	0.0%
DDS	0	0.0%
DMW	152	17.1%
DSR	54	6.1%
DSS	39	4.4%
FRR	1	0.1%
FTI	7	0.8%
HLD	4	0.5%
LMU	25	2.8%
MET	285	32.1%
OET	1	0.1%
OPR	39	4.4%
OTH	38	4.3%
PAS	125	14.1%
POL	3	0.3%
PTC	1	0.1%
PTI	63	7.1%
SUB	1	0.1%
SVS	0	0.0%
TOD	0	0.0%
TRK	7	0.8%
TRS	9	1.0%
UTL	0	0.0%
VAN	0	0.0%
WTR	14	1.6%
TOTAL	887	100.0%

REASONS (weekend)		
AMT	1	0.8%
CAR	4	3.3%
CAT	0	0.0%
DBS	0	0.0%
DDS	0	0.0%
DMW	9	7.4%
DSR	5	4.1%
DSS	1	0.8%
FRR	1	0.8%
FTI	0	0.0%
HLD	2	1.6%
LMU	2	1.6%
MET	43	35.2%
OET	0	0.0%
OPR	2	1.6%
OTH	2	1.6%
PAS	42	34.4%
POL	0	0.0%
PTC	1	0.8%
PTI	1	0.8%
SUB	0	0.0%
SVS	0	0.0%
TOD	0	0.0%
TRK	0	0.0%
TRS	0	0.0%
UTL	0	0.0%
VAN	0	0.0%
WTR	6	4.9%
TOTAL	122	100%

AMT-Amtrak delay
 CAR-Car or equipment failure
 DBS-Delays due to busing
 DDS-Debris strike
 DMW-Maintenance of Way work
 DSR-Speed Restriction
 DSS-Reduced speed due to restrictive signal
 FRR-Freight train interference from crossing
 FTI-Freight train interference on NICTD track
 HLD-Station delay related to passenger boarding
 LMU-Late make up (includes turn of equipment)
 MET-Metra delays

OET-Operational efficiency testing
 OPR-Operational delay
 OTH-Other delays
 PAS-Passenger boarding
 PTC-Positive train control delays
 PTI-Passenger train interference
 SUB-Substation
 SVS-Servicing (adding/removing equipment)
 TOD-Train order delay
 TRK-Track/wayside malfunction
 UTL-Utility power outage
 WTR-Weather

NICTD follows the industry standard in defining a train as on time if it arrives at its terminal within 5 minutes and 59 seconds.

October 2024 Ridership Report

Cumulative Percent on Time Thru October, 2024

Peak		
Train	Days	% on
	Late	Time
400	5	90.4%
102	73	65.6%
104	48	77.5%
6	11	88.3%
106	56	73.7%
8	36	70.0%
108	118	44.9%
110	84	60.6%
112	93	56.5%
212	41	39.7%
14	56	16.4%
114	111	48.1%
214	71	55.6%
216	65	44.0%
118	68	0.0%
11	31	66.7%
111	64	31.2%
113	28	70.2%
115	86	46.9%
17	149	30.0%
117	154	27.4%
217	9	90.2%
119	145	31.9%
121	110	6.8%
123	98	17.6%
25	113	5.8%
225	113	3.4%
127	96	17.9%
29	61	9.0%
Total	2,312	44.6%
Westbound	1,055	55.0%
Eastbound	1,257	31.3%

Off-Peak		
Train	Days	% on
	Late	Time
14	40	57.4%
216	42	68.7%
116	25	73.4%
218	25	73.1%
18	81	13.8%
118	36	61.7%
220	75	53.1%
20	130	19.3%
222	114	51.3%
22	178	24.9%
422	13	86.0%
424	2	97.9%
120	102	28.7%
124	49	26.9%
224	83	41.5%
126	97	31.7%
226	63	55.6%
28	63	7.4%
128	90	36.6%
428	16	76.1%
228	49	55.5%
30	112	21.7%
430	9	93.7%
432	17	92.5%
401	11	95.3%
203	108	53.8%
403	19	92.0%
205	65	72.6%
207	96	59.3%
7	175	25.8%
107	24	74.5%
9	73	22.3%
109	132	44.1%
209	124	47.2%
19	18	80.9%
121	53	66.7%
123	53	66.7%
201	72	33.9%
405	3	97.9%
103	74	46.8%
105	99	30.8%
111	106	25.9%
13	66	1.5%
113	100	29.6%
31	66	1.5%
131	94	33.3%
133	116	18.9%
135	64	4.5%
101	119	49.8%
Total	3,067	53.0%
Westbound	1,018	62.8%
Eastbound	2,049	45.9%

Weekend/Holiday		
Train	Days	% on
	Late	Time
952	0	100.0%
600	30	64.3%
502	55	34.5%
504	65	22.6%
606	56	33.3%
506	65	21.7%
608	34	59.5%
508	51	39.3%
610	44	47.6%
954	0	100.0%
510	43	48.8%
956	0	100.0%
710	Deadhead move	
503	68	19.0%
603	61	27.4%
605	58	30.1%
505	66	21.4%
507	73	12.0%
509	65	22.6%
511	53	36.9%
513	12	36.8%
613	40	40.3%
601	31	63.1%
701	1	98.8%
703	8	90.4%
Total	979	42.9%
Westbound	443	44.1%
Eastbound	536	41.9%

Trains on time less than
95% peak and 85% off peak

October 2024 Ridership Report

REASONS (weekday)		
AMT	43	0.9%
CAR	91	2.0%
CAT	6	0.1%
DBS	4	0.1%
DDS	1	0.0%
DMW	376	8.2%
DSR	290	6.3%
DSS	164	3.6%
FRR	19	0.4%
FTI	32	0.7%
HLD	22	0.5%
LMU	164	3.6%
MET	1518	33.1%
OET	3	0.1%
OPR	131	2.9%
OTH	198	4.3%
PAS	892	19.5%
POL	20	0.4%
PTC	4	0.1%
PTI	394	8.6%
SUB	4	0.1%
SVS	11	0.2%
TOD	0	0.0%
TRK	143	3.1%
TRS	26	0.6%
UTL	4	0.1%
VAN	6	0.1%
WTR	16	0.3%
TOTAL	4,582	100.0%

REASONS (weekend)		
AMT	8	0.9%
CAR	24	2.6%
CAT	5	0.5%
DBS	0	0.0%
DDS	1	0.1%
DMW	99	10.8%
DSR	66	7.2%
DSS	26	2.8%
FRR	9	1.0%
FTI	7	0.8%
HLD	8	0.9%
LMU	17	1.8%
MET	198	21.5%
OET	0	0.0%
OPR	19	2.1%
OTH	32	3.5%
PAS	325	35.4%
POL	3	0.3%
PTC	2	0.2%
PTI	42	4.6%
SUB	0	0.0%
SVS	6	0.7%
TOD	0	0.0%
TRK	11	1.2%
TRS	1	0.1%
UTL	0	0.0%
VAN	0	0.0%
WTR	10	1.1%
TOTAL	919	100.0%

AMT-Amtrak delay

CAR-Car or equipment failure

DBS-Delays due to busing

DDS-Debris strike

DMW-Maintenance of Way work

DSR-Speed Restriction

DSS-Reduced speed due to restrictive signal

FRR-Freight train interference from crossing

FTI-Freight train interference on NICTD track

HLD-Station delay related to passenger boarding

LMU-Late make up (includes turn of equipment)

MET-Metra delays

OET-Operational efficiency testing

OPR-Operational delay

OTH-Other delays

PAS-Passenger boarding

PTC-Positive train control delays

PTI-Passenger train interference

SUB-Substation

SVS-Servicing (adding/removing equipment)

TOD-Train order delay

TRK-Track/wayside malfunction

UTL-Utility power outage

WTR-Weather

NICTD follows the industry standard in defining a train as on time if it arrives at its terminal within 5 minutes and 59 seconds.

October 2024 Ridership Report

RUSH HOUR* TRAIN DELAYS - October 2024 (minutes late)

Wed	Thu	Fri	Mon	Tue	Wed	Thu	Fri	Mon	Tue	Wed	Thu	Fri	Mon	Tue	Wed	Thu	Fri	Mon	Tue	Wed	Thu	Days	Days	%
2	3	4	7	8	9	10	11	14	15	16	17	18	21	22	23	24	25	28	29	30	31	Late	Ran	On Time
61		29					45							17								4	23	82.6%
	13		13			9		17	20	21	16	8	15			24	A				20	11	22	50.0%
10		6	6		8	7		24	15	26	27	28	28	13	13	A	32	13	15	16	21	19	22	13.6%
10			7					17	10	20	14	20	22	13	10	63	A	9	11	9	33	15	22	31.8%
11		10		10		7		8	35	10	15	12	12			45	12				7	14	23	39.1%
13	8	7		11	6	12	8	23	33	11	10	12	7		8	43	28	8	7	19	22	21	23	8.7%
10		8		12		14	10	35	35	25	15	15		19	15	44	39	12		92	257	18	23	21.7%
17								26	44	28	13	12	10		11	35	25			51	9	12	23	47.8%
30	23		10			23		38	42	34	12	33	11	14	11	38	24			52	8	17	23	26.1%
10	7		16	15	17	15		33	44	43	13	33	17	29	13	24	27	16	8	23	18	21	23	8.7%
19	10	21	18	18	20	31	10	44	41	37	32	37	46	31	15	23	27	12	15	29	15	23	23	0.0%
16	16	15	15	37	15	20	78	27	A	A	20	33	35	20	15	20	18		12	21	16	20	21	4.8%
9		6	12	27	20	12	87	35	41	63	28	21	42	20	10	13	13	16	18	25	9	21	23	8.7%
7	18	16	16	7	13	10		10	10	14	9	8	21		7			43	15	17	8	19	23	17.4%
6	8	12			9	9		10			9	7			10	10		23	19	10		14	23	39.1%
	7	9	13				12			6	8	9	13	10		8	11	11	6			14	23	39.1%
13	8	7	8	6	9	13	15		9	9	11	14	12	15	10	10	13		11		11	20	23	13.0%
	6	8	6		8				13	11		19	12	24	7	10	9		8		7	15	23	34.8%
10		18	24	28	13	20	10	19	24	115	13	20	15	25		13	8	12	12	23	21	23	23	8.7%
9	7		16	16	20	26	9	21	24	56	24	13	11	6	8	10	8	9	10	8	7	22	23	4.3%
9	10	18		10	12	27		18	11	59	12	7	13		9	14		7				16	23	30.4%
8		24	31	8	21	50			9	38	9	15	16	11	A	15	6			11	8	16	22	27.3%
71	78	73	66	71	70	71	82	56	52	56	62	68	80	76	68	63	62	65	81	79	70			
45	49	52	44	42	41	41	46	41	39	35	35	34	50	44	39	36	41	35	62	67	47			

or comparative purposes

MONTHLY SUMMARY OF RUSH HOUR ON TIME PERFORMANCE

	January			February			March			April			May			June		
	#Late	#Ran	%On time	#Late	#Ran	%On time	#Late	#Ran	%On time	#Late	#Ran	%On time	#Late	#Ran	%On time	#Late	#Ran	%On time
WB Rush	10	146	93.2%	2	146	98.6%	7	147	95.2%	9	154	94.2%	167	189	11.6%	97	179	45.8%
EB Rush	83	147	43.5%	80	147	45.6%	64	147	56.5%	32	154	79.2%	116	149	22.1%	148	155	4.5%
Total Rush	93	293	68.3%	82	293	72.0%	71	294	75.9%	41	308	86.7%	283	338	16.3%	245	334	26.6%

	July			August			September			October			November			December		
	#Late	#Ran	%On time	#Late	#Ran	%On time	#Late	#Ran	%On time	#Late	#Ran	%On time	#Late	#Ran	%On time	#Late	#Ran	%On time
WB Rush	122	176	30.7%	113	202	44.1%	102	220	53.6%	216	294	26.5%						
EB Rush	146	154	5.2%	133	153	13.1%	109	137	20.4%	157	206	23.8%						
Total Rush	268	330	18.8%	246	355	30.7%	211	357	40.9%	373	500	25.4%						

October 2024 Ridership Report

Cumulative

Arrive	Train #	Days Late	Days Ran	% On Time
2:30a	400	5	51	90.2%
5:48a	102	72	213	66.2%
6:31	104	48	213	77.5%
6:55	6	14	116	87.9%
6:38	106	56	213	73.7%
6:58	8	36	120	70.0%
7:35	108	118	214	44.9%
7:51a	110	83	212	60.8%
7:35a	112	93	214	56.5%
7:51a	212	41	69	40.6%
8:17a	14	55	68	19.1%
8:31a	114	111	214	48.1%
8:52a	214	70	160	56.3%
10:28a	216	103	209	50.7%
9:41a	118	70	77	9.1%
Depart				
3:28p	115	67	68	1.5%
3:57p	11	30	93	67.7%
4:02p	17	157	214	26.6%
4:28p	117	126	212	40.6%
4:57p	119	133	214	37.9%
5:10p	121	171	212	19.3%
5:28p	123	157	213	26.3%
5:32p	25	121	205	41.0%
5:58p	225	143	202	29.2%
7:15p	127	113	202	44.1%
6:25p	29	60	67	10.4%
6:25p	129	28	41	31.7%

Cumulative Rush Hour Thru October

Range	TOTAL			PERCENTAGE		
	am	pm	total	am	pm	total
6-10	289	432	721	10.4%	20.5%	14.7%
11-15	311	355	666	11.2%	16.8%	13.6%
16-20	144	214	358	5.2%	10.2%	7.3%
21-30	67	180	247	2.4%	8.5%	5.1%
31-59	71	88	159	2.6%	4.2%	3.3%
60+	18	25	43	0.6%	1.2%	0.9%
Annulled	11	20	31			
Total Late	900	1294	2194	32.3%	61.4%	44.9%
On time	1884	813	2697	67.7%	38.6%	55.1%
Total ran	2784	2107	4891	100.0%	100.0%	100.0%

October 2024 Rush Hour

Range	TOTAL			PERCENTAGE		
	am	pm	total	am	pm	total
6-10	45	76	121	15.3%	36.9%	24.2%
11-15	52	43	95	17.7%	20.9%	19.0%
16-20	36	16	52	12.2%	7.8%	10.4%
21-30	38	15	53	12.9%	7.3%	10.6%
31-59	38	6	44	12.9%	2.9%	8.8%
60+	7	1	8	2.4%	0.5%	1.6%
Annulled	5	1	6			
Total Late	216	157	373	73.5%	76.2%	74.6%
On time	78	49	127	26.5%	23.8%	25.4%
Total ran	294	206	500	100.0%	100.0%	100.0%

Grand Total All Trains Thru October, 2024

Range	Peak			Wkend	Total	%
	WB	EB	Off			
6-10	289	432	994	290	2,005	13.9%
11-15	311	355	945	256	1,867	12.9%
16-20	144	214	652	188	1,198	8.3%
21-30	67	180	603	179	1,029	7.1%
31-59	71	88	567	98	824	5.7%
60+	18	25	141	33	217	1.5%
Annulled	11	20	77	4	112	
Total	900	1,294	3,902	1,044	7,140	49.5%
On Time	1,884	813	3,804	796	7,297	50.5%
Total ran	2,784	2,107	7,706	1,840	14,437	100.0%
%On Time	67.7%	38.6%	49.4%	43.3%	50.5%	

Year-to-date cumulative

	#Late	#Ran	%On time
WB Rush	845	1853	54.4%
EB Rush	1068	1549	31.1%
Total Rush	1913	3,402	43.8%